

Datasheet for ABIN2775492
anti-DNASE2B antibody (Middle Region)[Go to Product page](#)

1 Image

Overview

Quantity:	100 µL
Target:	DNASE2B
Binding Specificity:	Middle Region
Reactivity:	Human, Guinea Pig, Cow, Horse, Rat, Pig
Host:	Rabbit
Clonality:	Polyclonal
Conjugate:	This DNASE2B antibody is un-conjugated
Application:	Western Blotting (WB)

Product Details

Immunogen:	The immunogen is a synthetic peptide directed towards the middle region of human DNASE2B
Sequence:	IKAIKLSRHS YFSSYQDHAK WCISQKGTKN RWTCIGDLNR SPHQAFRSGG
Predicted Reactivity:	Cow: 93%, Guinea Pig: 79%, Horse: 86%, Human: 100%, Pig: 86%, Rat: 86%
Characteristics:	This is a rabbit polyclonal antibody against DNASE2B. It was validated on Western Blot using a cell lysate as a positive control.
Purification:	Affinity Purified

Target Details

Target:	DNASE2B
Alternative Name:	DNASE2B (DNASE2B Products)

Target Details

Background:	<p>DNASE2B shares considerable sequence similarity to, and is structurally related to DNase II. The latter is a well characterized endonuclease that catalyzes DNA hydrolysis in the absence of divalent cations at acidic pH . Unlike DNase II which is ubiquitously expressed, expression of this protein is restricted to the salivary gland and lungs. The protein encoded by this gene shares considerable sequence similarity to, and is structurally related to DNase II. The latter is a well characterized endonuclease that catalyzes DNA hydrolysis in the absence of divalent cations at acidic pH . Unlike DNase II which is ubiquitously expressed, expression of this gene product is restricted to the salivary gland and lungs. The gene has been localized to chromosome 1p22.3 adjacent (and in opposite orientation) to the uricase pseudogene. Two transcript variants encoding different isoforms have been described for this gene.</p> <p>Alias Symbols: DLAD</p> <p>Protein Interaction Partner: UBC, UBD,</p> <p>Protein Size: 357</p>
-------------	--

Molecular Weight:	39 kDa
-------------------	--------

Gene ID:	58511
----------	-------

NCBI Accession:	NM_021233 , NP_067056
-----------------	---

UniProt:	Q8WZ79
----------	------------------------

Application Details

Application Notes:	Optimal working dilutions should be determined experimentally by the investigator.
--------------------	--

Comment:	Antigen size: 357 AA
----------	----------------------

Restrictions:	For Research Use only
---------------	-----------------------

Handling

Format:	Liquid
---------	--------

Concentration:	Lot specific
----------------	--------------

Buffer:	Liquid. Purified antibody supplied in 1x PBS buffer with 0.09 % (w/v) sodium azide and 2 % sucrose.
---------	---

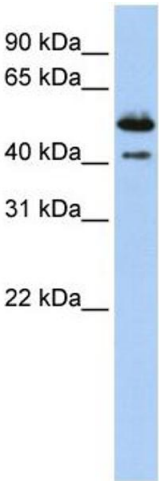
Preservative:	Sodium azide
---------------	--------------

Precaution of Use:	This product contains Sodium azide: a POISONOUS AND HAZARDOUS SUBSTANCE which should be handled by trained staff only.
--------------------	--

Handling

Handling Advice:	Avoid repeated freeze-thaw cycles.
Storage:	-20 °C
Storage Comment:	For short term use, store at 2-8°C up to 1 week. For long term storage, store at -20°C in small aliquots to prevent freeze-thaw cycles.

Images



Western Blotting

Image 1. WB Suggested Anti-DNASE2B Antibody Titration:
0.2-1 ug/ml ELISA Titer: 1:312500 Positive Control: Human Placenta