

Datasheet for ABIN2775498
anti-RAB38 antibody (N-Term)[Go to Product page](#)

2 Images

Overview

Quantity:	100 µL
Target:	RAB38
Binding Specificity:	N-Term
Reactivity:	Human, Mouse, Rat, Dog, Guinea Pig, Horse, Rabbit, Cow, Zebrafish (Danio rerio)
Host:	Rabbit
Clonality:	Polyclonal
Conjugate:	This RAB38 antibody is un-conjugated
Application:	Western Blotting (WB)

Product Details

Immunogen:	The immunogen is a synthetic peptide directed towards the N terminal region of human RAB38
Sequence:	MQAPHKEHLY KLLVIGDLGV GKTSIIKRYV HQNFSSHYRA TIGVDFALKV
Predicted Reactivity:	Cow: 100%, Dog: 100%, Guinea Pig: 100%, Horse: 100%, Human: 100%, Mouse: 100%, Rabbit: 100%, Rat: 100%, Zebrafish: 90%
Characteristics:	This is a rabbit polyclonal antibody against RAB38. It was validated on Western Blot using a cell lysate as a positive control.
Purification:	Affinity Purified

Target Details

Target:	RAB38
---------	-------

Target Details

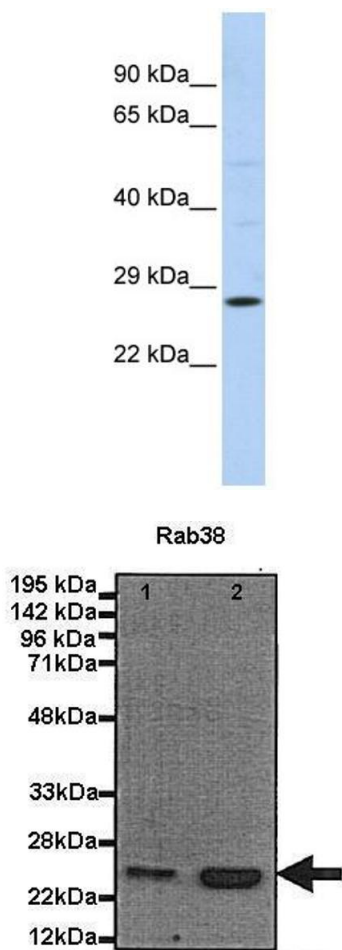
Alternative Name:	RAB38 (RAB38 Products)
Background:	<p>RAB38 may be involved in melanosomal transport and docking. Involved in the proper sorting of TYRP1.</p> <p>Alias Symbols: NY-MEL-1, rrGTPbp</p> <p>Protein Interaction Partner: APP, UBC, BMPR1B, SMAD3, SMAD1, SMAD2, SMAD4, TGFB1, Protein Size: 211</p>
Molecular Weight:	24 kDa
Gene ID:	23682
NCBI Accession:	NM_022337 , NP_071732
UniProt:	P57729

Application Details

Application Notes:	Optimal working dilutions should be determined experimentally by the investigator.
Comment:	Antigen size: 211 AA
Restrictions:	For Research Use only

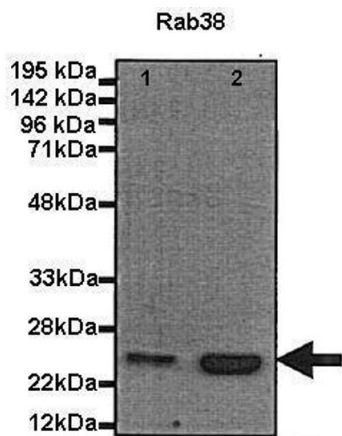
Handling

Format:	Liquid
Concentration:	Lot specific
Buffer:	Liquid. Purified antibody supplied in 1x PBS buffer with 0.09 % (w/v) sodium azide and 2 % sucrose.
Preservative:	Sodium azide
Precaution of Use:	This product contains Sodium azide: a POISONOUS AND HAZARDOUS SUBSTANCE which should be handled by trained staff only.
Handling Advice:	Avoid repeated freeze-thaw cycles.
Storage:	-20 °C
Storage Comment:	For short term use, store at 2-8°C up to 1 week. For long term storage, store at -20°C in small aliquots to prevent freeze-thaw cycles.



Western Blotting

Image 1. WB Suggested Anti-RAB38 Antibody Titration: 0.2-1 ug/ml ELISA Titer: 1:312500 Positive Control: MCF7 cell lysate



Western Blotting

Image 2. Human, Mouse

See Immunoblot 2 Data and Customer Feedback for more Information