

Datasheet for ABIN2775519
anti-SLC19A3 antibody (Middle Region)

5 Images

[Go to Product page](#)

Overview

Quantity:	100 µL
Target:	SLC19A3 (Slc19a3)
Binding Specificity:	Middle Region
Reactivity:	Human, Mouse, Rat, Cow, Dog, Guinea Pig, Rabbit, Horse
Host:	Rabbit
Clonality:	Polyclonal
Conjugate:	This SLC19A3 antibody is un-conjugated
Application:	Western Blotting (WB)

Product Details

Immunogen:	The immunogen is a synthetic peptide directed towards the middle region of human SLC19A3
Sequence:	FATAGFNQVL NYVQILWDYK APSQDSSIYN GAVEAIATFG GAVAAFAVG Y
Predicted Reactivity:	Cow: 86%, Dog: 86%, Guinea Pig: 100%, Horse: 86%, Human: 100%, Mouse: 100%, Rabbit: 86%, Rat: 100%
Characteristics:	This is a rabbit polyclonal antibody against SLC19A3. It was validated on Western Blot using a cell lysate as a positive control.
Purification:	Affinity Purified

Target Details

Target:	SLC19A3 (Slc19a3)
---------	-------------------

Target Details

Alternative Name:	SLC19A3 (Slc19a3 Products)
Background:	<p>SLC19A3 mediates high affinity thiamine uptake, propably via a proton anti-port mechanism.</p> <p>SLC19A3 has no folate transport activity.SLC19A3 is a member of the reduced folate family of micronutrient transporter genes.[supplied by OMIM]. Publication Note: This RefSeq record includes a subset of the publications that are available for this gene. Please see the Entrez Gene record to access additional publications.</p> <p>Alias Symbols: THTR2, BBGD, THMD2</p> <p>Protein Interaction Partner: C3orf38, CREB3L4, TAB2,</p> <p>Protein Size: 496</p>
Molecular Weight:	56 kDa
Gene ID:	80704
NCBI Accession:	NM_025243 , NP_079519
UniProt:	Q9BZV2
Pathways:	Dicarboxylic Acid Transport

Application Details

Application Notes:	Optimal working dilutions should be determined experimentally by the investigator.
Comment:	Antigen size: 496 AA
Restrictions:	For Research Use only

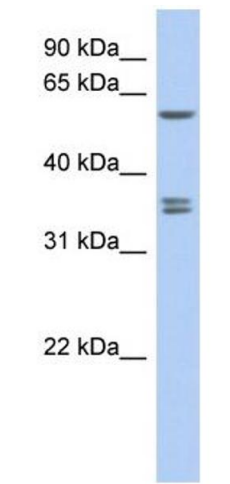
Handling

Format:	Liquid
Concentration:	Lot specific
Buffer:	Liquid. Purified antibody supplied in 1x PBS buffer with 0.09 % (w/v) sodium azide and 2 % sucrose.
Preservative:	Sodium azide
Precaution of Use:	This product contains Sodium azide: a POISONOUS AND HAZARDOUS SUBSTANCE which should be handled by trained staff only.
Handling Advice:	Avoid repeated freeze-thaw cycles.
Storage:	-20 °C

Handling

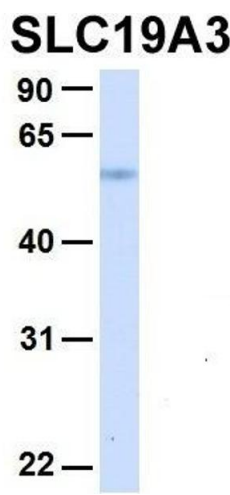
Storage Comment: For short term use, store at 2-8°C up to 1 week. For long term storage, store at -20°C in small aliquots to prevent freeze-thaw cycles.

Images



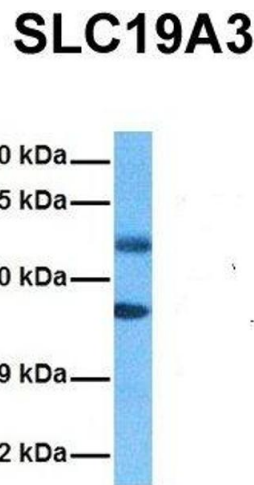
Western Blotting

Image 1. WB Suggested Anti-SLC19A3 Antibody Titration: 0.2-1 ug/ml ELISA Titer: 1:62500 Positive Control: DU145 cell lysate



Western Blotting

Image 2. Host: Rabbit Target Name: SLC19A3 Sample Type: Human Fetal Liver Antibody Dilution: 1.0ug/ml



Western Blotting

Image 3. Host: Rabbit Target Name: SLC19A3 Sample Tissue: Human Ovary Tumor Antibody Dilution: 1.0ug/ml

Please check the [product details page](#) for more images. Overall 5 images are available for ABIN2775519.