



[Go to Product page](#)

Datasheet for ABIN2775520
anti-EGFL8 antibody (C-Term)

4 Images

Overview

Quantity:	100 µL
Target:	EGFL8
Binding Specificity:	C-Term
Reactivity:	Human, Mouse, Rat, Dog, Horse, Pig, Rabbit, Cow, Zebrafish (Danio rerio)
Host:	Rabbit
Clonality:	Polyclonal
Conjugate:	This EGFL8 antibody is un-conjugated
Application:	Immunohistochemistry (IHC), Western Blotting (WB)

Product Details

Immunogen:	The immunogen is a synthetic peptide directed towards the C terminal region of human EGFL8
Sequence:	QAGAWRAVL PVPPEELQPE QVAELWGRGD RIESLSDQVL LLEERLGACS
Predicted Reactivity:	Cow: 93%, Dog: 86%, Horse: 100%, Human: 100%, Mouse: 100%, Pig: 100%, Rabbit: 100%, Rat: 100%, Zebrafish: 90%
Characteristics:	This is a rabbit polyclonal antibody against EGFL8. It was validated on Western Blot and immunohistochemistry.
Purification:	Protein A purified

Target Details

Target:	EGFL8
---------	-------

Target Details

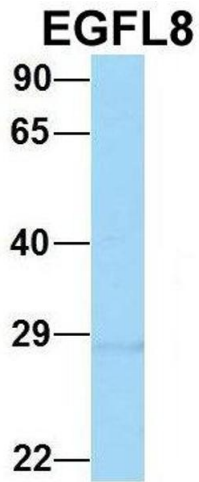
Alternative Name:	EGFL8 (EGFL8 Products)
Background:	The function remains unknown. Alias Symbols: DAQB-143M3.8, C6orf8, FLJ44493, MGC44938, MGC59719, NG3 Protein Interaction Partner: KRTAP10-3, RMDN3, TIMM8B, Protein Size: 293
Molecular Weight:	32 kDa
Gene ID:	80864
NCBI Accession:	NM_030652 , NP_085155
UniProt:	Q99944

Application Details

Application Notes:	Optimal working dilutions should be determined experimentally by the investigator.
Comment:	Antigen size: 293 AA
Restrictions:	For Research Use only

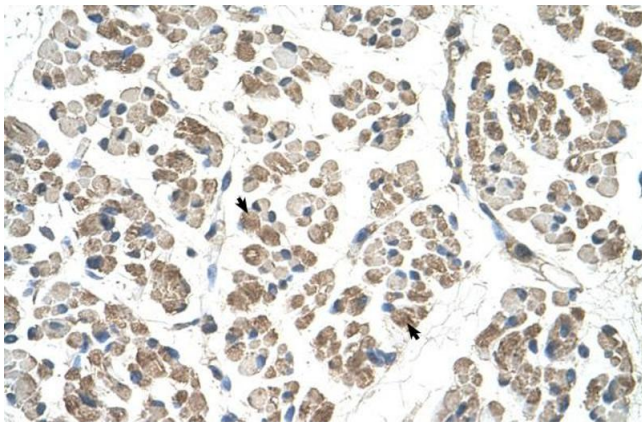
Handling

Format:	Liquid
Concentration:	Lot specific
Buffer:	Liquid. Purified antibody supplied in 1x PBS buffer with 0.09 % (w/v) sodium azide and 2 % sucrose.
Preservative:	Sodium azide
Precaution of Use:	This product contains Sodium azide: a POISONOUS AND HAZARDOUS SUBSTANCE which should be handled by trained staff only.
Handling Advice:	Avoid repeated freeze-thaw cycles.
Storage:	-20 °C
Storage Comment:	For short term use, store at 2-8°C up to 1 week. For long term storage, store at -20°C in small aliquots to prevent freeze-thaw cycles.



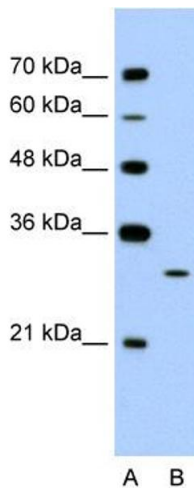
Western Blotting

Image 1. Host: Rabbit Target Name: EGFL8 Sample Type: HeLa Antibody Dilution: 1.0ug/ml EGFL8 is supported by BioGPS gene expression data to be expressed in HeLa



Immunohistochemistry

Image 2. Human Muscle



Western Blotting

Image 3. WB Suggested Anti-EGFL8 Antibody Titration: 1.25ug/ml Positive Control: Jurkat cell lysate

Please check the [product details page](#) for more images. Overall 4 images are available for ABIN2775520.