

Datasheet for ABIN2775532  
**anti-ZGPAT antibody (N-Term)**



[Go to Product page](#)

3 Images

Overview

Quantity:	100 µL
Target:	ZGPAT
Binding Specificity:	N-Term
Reactivity:	Human, Mouse, Rat, Dog, Cow, Guinea Pig, Sheep
Host:	Rabbit
Clonality:	Polyclonal
Conjugate:	This ZGPAT antibody is un-conjugated
Application:	Western Blotting (WB), Immunohistochemistry (IHC)

Product Details

Immunogen:	The immunogen is a synthetic peptide directed towards the N terminal region of human ZGPAT
Sequence:	DEESLESALQ TYRAQLQVE LALGAGLDSS EQADLRQLQG DLKELIELTE
Predicted Reactivity:	Cow: 93%, Dog: 85%, Guinea Pig: 93%, Human: 100%, Mouse: 100%, Rat: 100%, Sheep: 93%
Characteristics:	This is a rabbit polyclonal antibody against ZGPAT. It was validated on Western Blot using a cell lysate as a positive control.
Purification:	Affinity Purified

Target Details

Target:	ZGPAT
Alternative Name:	ZGPAT ( <a href="#">ZGPAT Products</a> )

## Target Details

---

Background:	<p>ZGPAT contains 1 C3H1-type zinc finger and 1 G-patch domain. The function of the ZGPAT protein is not known.</p> <p>Alias Symbols: GPATC6, GPATCH6, KIAA1847, MGC44880, ZC3H9, ZC3HDC9, ZIP, RP4-583P15.3</p> <p>Protein Interaction Partner: MID2, BLZF1, AIMP2, TP53BP2, TRIM27, KRT15, KIFC3, GOLGA2, PHC2, DHX15, AES, AMOTL2, TFIP11, LDOC1, CCNDBP1, IKZF3, ZBTB8A, CCDC57, STAC3, FAM9B, MIPOL1, DYDC1, KRT40, SSX2IP, LZTS2, CEP70, CCDC33, BEND5, TRIM54, UBC, HDAC1, RBBP7, vpr, MTA2, HAT1, UPF2,</p> <p>Protein Size: 531</p>
Molecular Weight:	57 kDa
Gene ID:	84619
NCBI Accession:	<a href="#">NM_032527</a> , <a href="#">NP_115916</a>
UniProt:	<a href="#">Q8N5A5</a>
Pathways:	<a href="#">EGFR Signaling Pathway</a>

## Application Details

---

Application Notes:	Optimal working dilutions should be determined experimentally by the investigator.
Comment:	Antigen size: 531 AA
Restrictions:	For Research Use only

## Handling

---

Format:	Liquid
Concentration:	Lot specific
Buffer:	Liquid. Purified antibody supplied in 1x PBS buffer with 0.09 % (w/v) sodium azide and 2 % sucrose.
Preservative:	Sodium azide
Precaution of Use:	This product contains Sodium azide: a POISONOUS AND HAZARDOUS SUBSTANCE which should be handled by trained staff only.
Handling Advice:	Avoid repeated freeze-thaw cycles.
Storage:	-20 °C

## Handling

Storage Comment: For short term use, store at 2-8°C up to 1 week. For long term storage, store at -20°C in small aliquots to prevent freeze-thaw cycles.

## Images

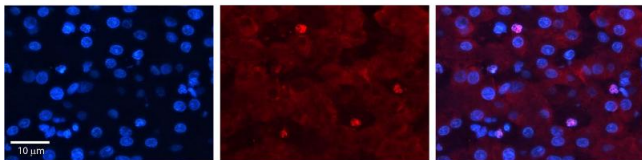


### Western Blotting

**Image 1.** WB Suggested Anti-ZGPAT Antibody Titration: 0.2-1 µg/ml ELISA Titer: 1:312500 Positive Control: HepG2 cell lysate ZGPAT is strongly supported by BioGPS gene expression data to be expressed in Human HepG2 cells

### Western Blotting

**Image 2.** WB Suggested Anti-ZGPAT Antibody Titration: 0.2-1 µg/mL ELISA Titer: 1:12500 Positive Control: HepG2 cell lysate ZGPAT is strongly supported by BioGPS gene expression data to be expressed in Human HepG2 cells



### Immunohistochemistry

**Image 3.** ZGPAT antibody - N-terminal region Formalin Fixed Paraffin Embedded Tissue: Human Liver Tissue Observed Staining: Nucleus in Kupffer cells of liver Primary Antibody Concentration: 1:100 Other Working Concentrations: 1/600 Secondary Antibody: Donkey anti-Rabbit-Cy3 Secondary Antibody Concentration: 1:200 Magnification: 20X Exposure Time: 0.5 - 2.0 sec