

Datasheet for ABIN2775535  
**anti-SYDE1 antibody (N-Term)**[Go to Product page](#)

## 2 Images

## Overview

Quantity:	100 µL
Target:	SYDE1
Binding Specificity:	N-Term
Reactivity:	Human, Rat, Dog, Guinea Pig, Rabbit, Cow
Host:	Rabbit
Clonality:	Polyclonal
Conjugate:	This SYDE1 antibody is un-conjugated
Application:	Western Blotting (WB)

## Product Details

Immunogen:	The immunogen is a synthetic peptide directed towards the N terminal region of human SYDE1
Sequence:	PSPPEPEPQA PEGSQAGAEG PSSPEASRSP ARGAYLQSLE PSSRRWVLGG
Predicted Reactivity:	Cow: 92%, Dog: 79%, Guinea Pig: 86%, Human: 100%, Rabbit: 85%, Rat: 79%
Characteristics:	This is a rabbit polyclonal antibody against SYDE1. It was validated on Western Blot using a cell lysate as a positive control.
Purification:	Affinity Purified

## Target Details

Target:	SYDE1
Alternative Name:	SYDE1 ( <a href="#">SYDE1 Products</a> )

## Target Details

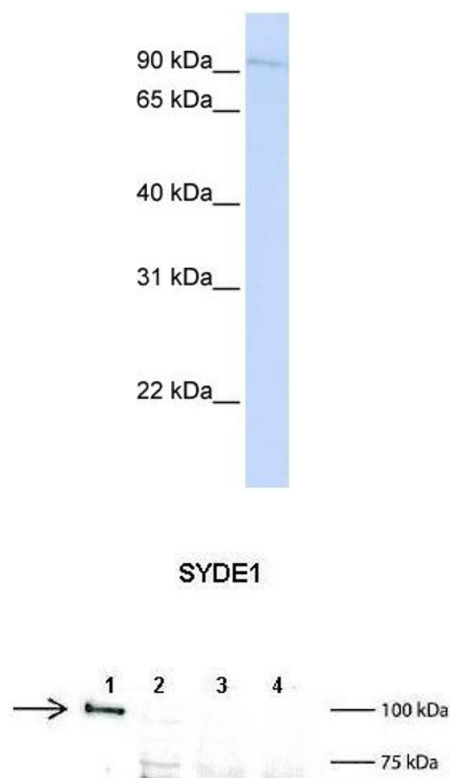
Background:	SYDE1 contains 1 Rho-GAP domain. It is a GTPase activator for the Rho-type GTPases by converting them to an inactive GDP-bound state. Alias Symbols: 7h3, FLJ13511 Protein Interaction Partner: SH3KBP1, UBC, Protein Size: 735
Molecular Weight:	80 kDa
Gene ID:	85360
NCBI Accession:	<a href="#">NM_033025</a> , <a href="#">NP_149014</a>
UniProt:	<a href="#">Q6ZW31</a>

## Application Details

Application Notes:	Optimal working dilutions should be determined experimentally by the investigator.
Comment:	Antigen size: 735 AA
Restrictions:	For Research Use only

## Handling

Format:	Liquid
Concentration:	Lot specific
Buffer:	Liquid. Purified antibody supplied in 1x PBS buffer with 0.09 % (w/v) sodium azide and 2 % sucrose.
Preservative:	Sodium azide
Precaution of Use:	This product contains Sodium azide: a POISONOUS AND HAZARDOUS SUBSTANCE which should be handled by trained staff only.
Handling Advice:	Avoid repeated freeze-thaw cycles.
Storage:	-20 °C
Storage Comment:	For short term use, store at 2-8°C up to 1 week. For long term storage, store at -20°C in small aliquots to prevent freeze-thaw cycles.



See Immunoblot 2 Data and customer Feedback for more Information

Western Blotting

**Image 1.** WB Suggested Anti-SYDE1 Antibody Titration: 0.2-1 ug/ml ELISA Titer: 1:12500 Positive Control: HepG2 cell lysate

Western Blotting

**Image 2.** Lanes: 1: 2ug mouse SYDE1 transfected HEK293T lysate, 2: 15ug untransfected HEK293T lysate, 3: 100ug wild type mouse brain lysate, 4: 100ug SYDE1 knock-out mouse brain lysate Primary Antibody Dilution: 1:500 Secondary Antibody Dilution: 1:10,000 Gene Name: SYDE1 Submitted by: Anonymous