



[Go to Product page](#)

Datasheet for ABIN2775551
anti-YIPF6 antibody (C-Term)

1 Image

1 Publication

Overview

Quantity:	100 µL
Target:	YIPF6
Binding Specificity:	C-Term
Reactivity:	Human, Dog, Rabbit, Rat, Zebrafish (Danio rerio), Cow, Guinea Pig, Horse, Mouse
Host:	Rabbit
Clonality:	Polyclonal
Conjugate:	This YIPF6 antibody is un-conjugated
Application:	Western Blotting (WB)

Product Details

Immunogen:	The immunogen is a synthetic peptide directed towards the C terminal region of human YIPF6
Sequence:	MVRLFVVIVM FAWSIVASTA LLADSQPPNR RALAVYPVFL FYFVISWMIL
Predicted Reactivity:	Cow: 93%, Dog: 86%, Guinea Pig: 93%, Horse: 93%, Human: 100%, Mouse: 93%, Rabbit: 100%, Rat: 93%, Zebrafish: 79%
Characteristics:	This is a rabbit polyclonal antibody against YIPF6. It was validated on Western Blot using a cell lysate as a positive control.
Purification:	Affinity Purified

Target Details

Target:	YIPF6
---------	-------

Target Details

Alternative Name:	YIPF6 (YIPF6 Products)
Background:	<p>YIPF6 is a multi-pass membrane proteinPotential. It belongs to the YIP1 family.The exact function of YIPF6 remains unknown.</p> <p>Alias Symbols: FinGER6, MGC21416, RP13-253K9.1</p> <p>Protein Interaction Partner: YIPF2, YIPF1, CLN8, ELAVL1,</p> <p>Protein Size: 236</p>
Molecular Weight:	26 kDa
Gene ID:	286451
NCBI Accession:	NM_173834 , NP_776195
UniProt:	Q96EC8

Application Details

Application Notes:	Optimal working dilutions should be determined experimentally by the investigator.
Comment:	Antigen size: 236 AA
Restrictions:	For Research Use only

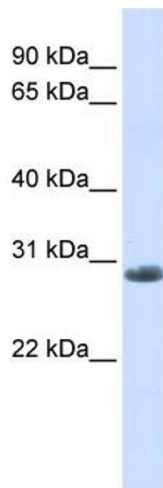
Handling

Format:	Liquid
Concentration:	Lot specific
Buffer:	Liquid. Purified antibody supplied in 1x PBS buffer with 0.09 % (w/v) sodium azide and 2 % sucrose.
Preservative:	Sodium azide
Precaution of Use:	This product contains Sodium azide: a POISONOUS AND HAZARDOUS SUBSTANCE which should be handled by trained staff only.
Handling Advice:	Avoid repeated freeze-thaw cycles.
Storage:	-20 °C
Storage Comment:	For short term use, store at 2-8°C up to 1 week. For long term storage, store at -20°C in small aliquots to prevent freeze-thaw cycles.

Publications

Product cited in: Ewing, Chu, Elisma, Li, Taylor, Climie, McBroom-Cerajewski, Robinson, OConnor, Li, Taylor, Dharsee, Ho, Heilbut, Moore, Zhang, Ornatsky, Bukhman, Ethier, Sheng, Vasilescu, Abu-Farha, Lambert, Duewel et al.: "Large-scale mapping of human protein-protein interactions by mass spectrometry. ..." in: **Molecular systems biology**, Vol. 3, pp. 89, (2007) ([PubMed](#)).

Images



Western Blotting

Image 1. WB Suggested Anti-YIPF6 Antibody Titration: 0.2-1 ug/ml ELISA Titer: 1:312500 Positive Control: Human Muscle