

Datasheet for ABIN2775554

**anti-ATG4A antibody (Middle Region)**[Go to Product page](#)**1** Image**1** Publication

## Overview

Quantity:	100 µL
Target:	ATG4A
Binding Specificity:	Middle Region
Reactivity:	Human, Mouse, Rat, Pig, Rabbit, Zebrafish (Danio rerio), Cow, Dog, Horse
Host:	Rabbit
Clonality:	Polyclonal
Conjugate:	This ATG4A antibody is un-conjugated
Application:	Western Blotting (WB)

## Product Details

Immunogen:	The immunogen is a synthetic peptide directed towards the middle region of human ATG4A
Sequence:	PQSLGALGGK PNNAYYFIGF LGDELIFLDP HTTQTFVDTE ENGTVNDQTF
Predicted Reactivity:	Cow: 100%, Dog: 100%, Horse: 100%, Human: 100%, Mouse: 100%, Pig: 100%, Rabbit: 100%, Rat: 100%, Zebrafish: 79%
Characteristics:	This is a rabbit polyclonal antibody against ATG4A. It was validated on Western Blot.
Purification:	Affinity Purified

## Target Details

Target:	ATG4A
Alternative Name:	ATG4A ( <a href="#">ATG4A Products</a> )

## Target Details

Background:	<p>Autophagy is the process by which endogenous proteins and damaged organelles are destroyed intracellularly. Autophagy is postulated to be essential for cell homeostasis and cell remodeling during differentiation, metamorphosis, non-apoptotic cell death, and aging. Reduced levels of autophagy have been described in some malignant tumors, and a role for autophagy in controlling the unregulated cell growth linked to cancer has been proposed. ATG4A is a member of the autophagin protein family. ATG4A is also designated as a member of the C-54 family of cysteine proteases.</p> <p>Alias Symbols: APG4A, AUTL2</p> <p>Protein Interaction Partner: CDKL3, GABARAPL1, GABARAPL2, ATG101, MAP1LC3B,</p> <p>Protein Size: 398</p>
Molecular Weight:	45 kDa
Gene ID:	115201
NCBI Accession:	<a href="#">NM_052936</a> , <a href="#">NP_443168</a>
UniProt:	<a href="#">Q8WYN0</a>
Pathways:	<a href="#">Autophagy</a>

## Application Details

Application Notes:	Optimal working dilutions should be determined experimentally by the investigator.
Comment:	Antigen size: 398 AA
Restrictions:	For Research Use only

## Handling

Format:	Liquid
Concentration:	Lot specific
Buffer:	Liquid. Purified antibody supplied in 1x PBS buffer with 0.09 % (w/v) sodium azide and 2 % sucrose.
Preservative:	Sodium azide
Precaution of Use:	This product contains Sodium azide: a POISONOUS AND HAZARDOUS SUBSTANCE which should be handled by trained staff only.
Handling Advice:	Avoid repeated freeze-thaw cycles.

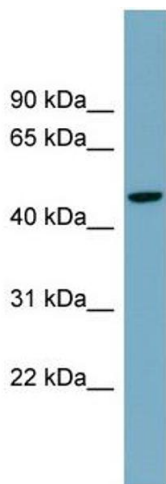
## Handling

Storage:	-20 °C
Storage Comment:	For short term use, store at 2-8°C up to 1 week. For long term storage, store at -20°C in small aliquots to prevent freeze-thaw cycles.

## Publications

Product cited in:	Bortnik, Choutka, Horlings, Leung, Baker, Lebovitz, Dragowska, Go, Bally, Minchinton, Gelmon, Gorski: "Identification of breast cancer cell subtypes sensitive to ATG4B inhibition." in: <b>Oncotarget</b> , Vol. 7, Issue 41, pp. 66970-66988, (2016) ( <a href="#">PubMed</a> ).
-------------------	--

## Images



### Western Blotting

**Image 1.** WB Suggested Anti-ATG4A Antibody Titration: 0.2-1 ug/ml ELISA Titer: 1:312500 Positive Control: Human Spleen