

Datasheet for ABIN2775556  
**anti-PLOD2 antibody (Middle Region)**



[Go to Product page](#)

2 Images

1 Publication

## Overview

Quantity:	100 µL
Target:	PLOD2
Binding Specificity:	Middle Region
Reactivity:	Human, Rat, Mouse, Pig, Rabbit, Cow, Dog, Horse
Host:	Rabbit
Clonality:	Polyclonal
Conjugate:	This PLOD2 antibody is un-conjugated
Application:	Western Blotting (WB), Immunohistochemistry (IHC)

## Product Details

Immunogen:	The immunogen is a synthetic peptide directed towards the middle region of human PLOD2
Sequence:	IKGKTLRSEM NERNYFVRDK LDPDMALCRN AREMTLQREK DSPTPETFQM
Predicted Reactivity:	Cow: 100%, Dog: 100%, Horse: 100%, Human: 100%, Mouse: 100%, Pig: 100%, Rabbit: 100%, Rat: 100%
Characteristics:	This is a rabbit polyclonal antibody against PLOD2. It was validated on Western Blot using a cell lysate as a positive control.
Purification:	Affinity Purified

## Target Details

Target:	PLOD2
---------	-------

## Target Details

---

Alternative Name: [PLOD2 \(PLOD2 Products\)](#)

---

Background: PLOD2 forms hydroxylysine residues in -Xaa-Lys-Gly- sequences in collagens. These hydroxylysines serve as sites of attachment for carbohydrate units and are essential for the stability of the intermolecular collagen cross-links. The protein encoded by this gene is a membrane-bound homodimeric enzyme that is localized to the cisternae of the rough endoplasmic reticulum. The enzyme (cofactors iron and ascorbate) catalyzes the hydroxylation of lysyl residues in collagen-like peptides. The resultant hydroxylysyl groups are attachment sites for carbohydrates in collagen and thus are critical for the stability of intermolecular crosslinks. Some patients with Ehlers-Danlos syndrome type VIB have deficiencies in lysyl hydroxylase activity. Mutations in the coding region of this gene are associated with Bruck syndrome. Alternative splicing results in multiple transcript variants encoding different isoforms.

Alias Symbols: LH2, TLH

Protein Interaction Partner: ITGB1BP2, SUPT5H, CSDE1, SF1, UGP2, TPP2, VASN, RNF123, NUSAP1, SAMHD1, DNPEP, GANAB, SWAP70, XPO7, PACSIN2, FAF1, HSPH1, SEC23A, PRMT3, FARSB, USP15, RANBP3, SET, RPL24, PTPN12, NCL, NARS, JUP, GART, XRCC6, AP2B1, gag-pol, UBL4A, OS9, FBXO6, UBC, VHL, Fa

Protein Size: 758

---

Molecular Weight: 84 kDa

---

Gene ID: 5352

---

NCBI Accession: [NM\\_182943](#), [NP\\_891988](#)

---

Pathways: [SARS-CoV-2 Protein Interactome](#)

---

## Application Details

---

Application Notes: Optimal working dilutions should be determined experimentally by the investigator.

---

Comment: Antigen size: 758 AA

---

Restrictions: For Research Use only

---

## Handling

---

Format: Liquid

---

Concentration: Lot specific

---

Buffer: Liquid. Purified antibody supplied in 1x PBS buffer with 0.09 % (w/v) sodium azide and 2 %

---

## Handling

---

sucrose.

Preservative: Sodium azide

Precaution of Use: This product contains Sodium azide: a POISONOUS AND HAZARDOUS SUBSTANCE which should be handled by trained staff only.

Handling Advice: Avoid repeated freeze-thaw cycles.

Storage: -20 °C

Storage Comment: For short term use, store at 2-8°C up to 1 week. For long term storage, store at -20°C in small aliquots to prevent freeze-thaw cycles.

## Publications

---

Product cited in: Yang, Kitamura, Wu, Chang, Ling, Kuo: "Tooth Germ-Like Construct Transplantation for Whole-Tooth Regeneration: An In Vivo Study in the Miniature Pig." in: **Artificial organs**, Vol. 40, Issue 4, pp. E39-50, (2016) ([PubMed](#)).

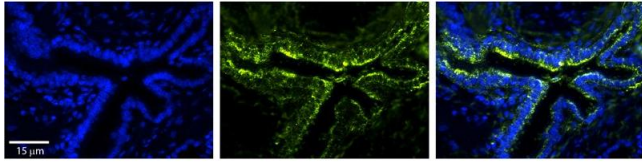
## Images

---



### Western Blotting

**Image 1.** WB Suggested Anti-PLOD2 Antibody Titration: 0.2-1 ug/ml ELISA Titer: 1:312500 Positive Control: DU145 cell lysate PLOD2 is strongly supported by BioGPS gene expression data to be expressed in Human DU145 cells



### Immunohistochemistry

**Image 2.** Rabbit Anti-PLOD2 Antibody Formalin Fixed Paraffin Embedded Tissue: Human Bronchial Epithelial Tissue Observed Staining: Cytoplasmic Primary Antibody Concentration: 1:100 Secondary Antibody: Donkey anti-Rabbit-Cy3 Secondary Antibody Concentration: 1:200 Magnification: 20X Exposure Time: 0.5 - 2.0 sec