

Datasheet for ABIN2775558
anti-ACLY antibody (Middle Region)

3 Images

1 Publication

[Go to Product page](#)

Overview

Quantity:	100 µL
Target:	ACLY
Binding Specificity:	Middle Region
Reactivity:	Human, Mouse, Rat, Pig, Cow, Rabbit, Zebrafish (Danio rerio), Sheep, Dog, Horse
Host:	Rabbit
Clonality:	Polyclonal
Conjugate:	This ACLY antibody is un-conjugated
Application:	Western Blotting (WB), Immunohistochemistry (IHC)

Product Details

Immunogen:	The immunogen is a synthetic peptide directed towards the middle region of human ACLY
Sequence:	LR SAYDSTME TMNYAQIRTI AIIAEGIP EA LTRKLIKKAD QKGV TIIGPA
Predicted Reactivity:	Cow: 100%, Dog: 100%, Horse: 93%, Human: 100%, Mouse: 100%, Pig: 93%, Rabbit: 86%, Rat: 100%, Sheep: 93%, Zebrafish: 86%
Characteristics:	This is a rabbit polyclonal antibody against ACLY. It was validated on Western Blot using a cell lysate as a positive control.
Purification:	Affinity Purified

Target Details

Target:	ACLY
---------	------

Target Details

Alternative Name:	ACLY (ACLY Products)
Background:	<p>ATP citrate lyase is the primary enzyme responsible for the synthesis of cytosolic acetyl-CoA in many tissues. The enzyme is a tetramer (relative molecular weight approximately 440,000) of apparently identical subunits. It catalyzes the formation of acetyl</p> <p>Alias Symbols: ACL, ATPCL, CLATP</p> <p>Protein Interaction Partner: UBC, UBR4, SIRT2, HUWE1, ISG15, KAT2B, SUMO2, SUMO3, STAU1, SUMO1, NEDD8, MDM2, ASB15, WWOX, TRIM25, MAGED2, BAG3, PPP6C, NCL, MCM6, MCM2, KPNA4, KPNA2, PRMT1, CDKN2A, SRRT, UBD, FN1, APP, SHC1, CUL3, CAND1, CUL2, SIRT7, UL27, HDAC5, TERF2, TERF1, GSK3B,</p> <p>Protein Size: 1101</p>
Molecular Weight:	121 kDa
Gene ID:	47
NCBI Accession:	NM_001096 , NP_001087
UniProt:	P53396
Pathways:	Warburg Effect

Application Details

Application Notes:	Optimal working dilutions should be determined experimentally by the investigator.
Comment:	Antigen size: 1101 AA
Restrictions:	For Research Use only

Handling

Format:	Liquid
Concentration:	Lot specific
Buffer:	Liquid. Purified antibody supplied in 1x PBS buffer with 0.09 % (w/v) sodium azide and 2 % sucrose.
Preservative:	Sodium azide
Precaution of Use:	This product contains Sodium azide: a POISONOUS AND HAZARDOUS SUBSTANCE which should be handled by trained staff only.
Handling Advice:	Avoid repeated freeze-thaw cycles.

Handling

Storage: -20 °C

Storage Comment: For short term use, store at 2-8°C up to 1 week. For long term storage, store at -20°C in small aliquots to prevent freeze-thaw cycles.

Publications

Product cited in: Infantino, Iacobazzi, Palmieri, Menga: "ATP-citrate lyase is essential for macrophage inflammatory response." in: **Biochemical and biophysical research communications**, Vol. 440, Issue 1, pp. 105-11, (2013) ([PubMed](#)).

Images

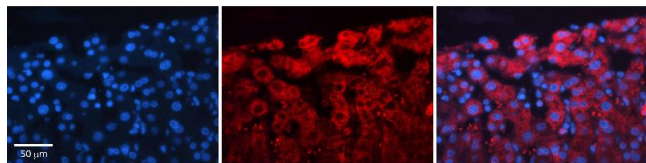


Western Blotting

Image 1. WB Suggested Anti-ACLY Antibody Titration: 0.2-1 ug/ml ELISA Titer: 1:1562500 Positive Control: ACHN cell lysate ACLY is strongly supported by BioGPS gene expression data to be expressed in Human ACHN cells

Western Blotting

Image 2. WB Suggested Anti-ACLY Antibody Titration: 0.2-1 µg/mL ELISA Titer: 1:1562500 Positive Control: ACHN cell lysate ACLY is strongly supported by BioGPS gene expression data to be expressed in Human ACHN cells



Immunohistochemistry

Image 3. Rabbit Anti-ACLY Antibody Formalin Fixed Paraffin Embedded Tissue: Human Liver Tissue Observed Staining: Cytoplasm in hepatocytes Primary Antibody Concentration: 1:100 Other Working Concentrations: N/A Secondary Antibody: Donkey anti-Rabbit-Cy3 Secondary Antibody Concentration: 1:200 Magnification: 20X Exposure Time: 0.5 - 2.0 sec