

Datasheet for ABIN2775560
anti-GLYT1 antibody (N-Term)



[Go to Product page](#)

1 Image

Overview

Quantity:	100 µL
Target:	GLYT1
Binding Specificity:	N-Term
Reactivity:	Human, Rat, Mouse, Dog, Guinea Pig, Rabbit, Cow, Horse
Host:	Rabbit
Clonality:	Polyclonal
Conjugate:	This GLYT1 antibody is un-conjugated
Application:	Western Blotting (WB)

Product Details

Immunogen:	The immunogen is a synthetic peptide directed towards the N-terminal region of Human SLC6A9
Sequence:	ARPRMAAAHG PVAPSSPEQN GAVPSEATKR DQNLKRGNWG NQIEFVLTSV
Predicted Reactivity:	Cow: 93%, Dog: 100%, Guinea Pig: 100%, Horse: 93%, Human: 100%, Mouse: 93%, Rabbit: 100%, Rat: 93%
Characteristics:	This is a rabbit polyclonal antibody against SLC6A9. It was validated on Western Blot.
Purification:	Affinity Purified

Target Details

Target:	GLYT1
---------	-------

Target Details

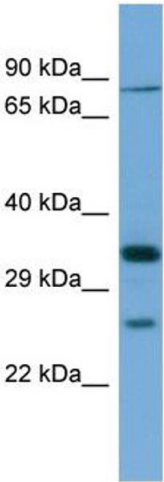
Alternative Name:	SLC6A9 (GLYT1 Products)
Background:	<p>SLC6A9 terminates the action of glycine by its high affinity sodium-dependent reuptake into presynaptic terminals. It may play a role in regulation of glycine levels in NMDA receptor-mediated neurotransmission.</p> <p>Protein Interaction Partner: UBC, GABRR1, STX1A, PRKCA,</p> <p>Protein Size: 652</p>
Molecular Weight:	72 kDa
Gene ID:	6536

Application Details

Application Notes:	Optimal working dilution should be determined by the investigator.
Restrictions:	For Research Use only

Handling

Format:	Liquid
Concentration:	1 mg/mL
Buffer:	Liquid. Purified antibody supplied in 1x PBS buffer with 0.09 % (w/v) sodium azide and 2 % sucrose.
Preservative:	Sodium azide
Precaution of Use:	This product contains Sodium azide: a POISONOUS AND HAZARDOUS SUBSTANCE which should be handled by trained staff only.
Handling Advice:	Avoid repeat freeze-thaw cycles.
Storage:	-20 °C
Storage Comment:	For short term use, store at 2-8°C up to 1 week. For long term storage, store at -20°C in small aliquots to prevent freeze-thaw cycles.



Western Blotting

Image 1. Host: Rabbit Target Name: SLC6A9 Sample Type: THP-1 Whole cell lysates Antibody Dilution: 1.0ug/ml