

Datasheet for ABIN2775563  
**anti-IGSF1 antibody (Middle Region)**[Go to Product page](#)[1 Image](#)[1 Publication](#)

## Overview

Quantity:	100 µL
Target:	IGSF1 (INHBP)
Binding Specificity:	Middle Region
Reactivity:	Human, Mouse, Rat, Dog, Rabbit, Guinea Pig, Horse, Cow, Sheep
Host:	Rabbit
Clonality:	Polyclonal
Conjugate:	This IGSF1 antibody is un-conjugated
Application:	Western Blotting (WB)

## Product Details

Immunogen:	The immunogen is a synthetic peptide directed towards the middle region of human IGSF1
Sequence:	TMAIFSIDNL TPEDEGVYIC RTHIQMLPTL WSEPSNPLKL VVAGGCGYGC
Predicted Reactivity:	Cow: 79%, Dog: 79%, Guinea Pig: 86%, Horse: 79%, Human: 100%, Mouse: 86%, Rabbit: 86%, Rat: 79%, Sheep: 86%
Characteristics:	This is a rabbit polyclonal antibody against IGSF1. It was validated on Western Blot using a cell lysate as a positive control.
Purification:	Affinity Purified

## Target Details

Target:	IGSF1 (INHBP)
---------	---------------

## Target Details

Alternative Name:	IGSF1 ( <a href="#">INHBP Products</a> )
Background:	<p>Members of the immunoglobulin (Ig) superfamily, which includes IGSF1, have a variety of functions, but all appear to play a role in cell recognition and the regulation of cell behavior.</p> <p>Members of the immunoglobulin (Ig) superfamily (see MIM 147100), which includes IGSF1, have a variety of functions, but all appear to play a role in cell recognition and the regulation of cell behavior.[supplied by OMIM]. PRIMARYREFSEQ_SPAN PRIMARY_IDENTIFIER</p> <p>PRIMARY_SPAN COMP 1-227 AB058894.2 1-227 228-250 Y10523.1 173-195 251-1813</p> <p>BC028312.1 223-1785</p> <p>Alias Symbols: IGCD1, IGDC1, INHBP, KIAA0364, MGC75490, PGSF2, p120</p> <p>Protein Interaction Partner: RANBP10, HECTD1, INHBB, INHBA, IGSF1, BMPR1B, BMPR1A, ACVRL1, ACVR2B, ACVR2A, ACVR1B, ACVR1, IGF1,</p> <p>Protein Size: 242</p>
Molecular Weight:	27 kDa
Gene ID:	3547
NCBI Accession:	<a href="#">NM_205833</a> , <a href="#">NP_991402</a>
UniProt:	<a href="#">Q8N6C5</a>

## Application Details

Application Notes:	Optimal working dilutions should be determined experimentally by the investigator.
Comment:	Antigen size: 242 AA
Restrictions:	For Research Use only

## Handling

Format:	Liquid
Concentration:	Lot specific
Buffer:	Liquid. Purified antibody supplied in 1x PBS buffer with 0.09 % (w/v) sodium azide and 2 % sucrose.
Preservative:	Sodium azide
Precaution of Use:	This product contains Sodium azide: a POISONOUS AND HAZARDOUS SUBSTANCE which should be handled by trained staff only.
Handling Advice:	Avoid repeated freeze-thaw cycles.

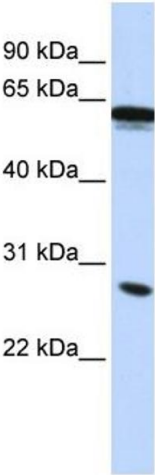
## Handling

Storage:	-20 °C
Storage Comment:	For short term use, store at 2-8°C up to 1 week. For long term storage, store at -20°C in small aliquots to prevent freeze-thaw cycles.

## Publications

Product cited in:	Mullins, Crawford, Khuder, Hernandez, Yoon, Willey: "CEBPG transcription factor correlates with antioxidant and DNA repair genes in normal bronchial epithelial cells but not in individuals with bronchogenic carcinoma." in: <b>BMC cancer</b> , Vol. 5, pp. 141, (2005) ( <a href="#">PubMed</a> ).
-------------------	--

## Images



### Western Blotting

**Image 1.** WB Suggested Anti-IGSF1 Antibody Titration: 0.2-1 ug/ml ELISA Titer: 1:1562500 Positive Control: HepG2 cell lysate IGSF1 is supported by BioGPS gene expression data to be expressed in HepG2