

Datasheet for ABIN2775569

anti-RAPGEF2 antibody (Middle Region)

2 Images

[Go to Product page](#)

Overview

Quantity:	100 µL
Target:	RAPGEF2
Binding Specificity:	Middle Region
Reactivity:	Human, Mouse, Dog, Horse, Rabbit, Rat, Cow, Guinea Pig, Zebrafish (Danio rerio)
Host:	Rabbit
Clonality:	Polyclonal
Conjugate:	This RAPGEF2 antibody is un-conjugated
Application:	Western Blotting (WB)

Product Details

Immunogen:	The immunogen is a synthetic peptide corresponding to a region of Mouse
Sequence:	SILPQKPYND IGIGSQDDS IVGLRQTKHI PAALPVSGTL SSSNPDLLQS
Predicted Reactivity:	Cow: 100%, Dog: 100%, Guinea Pig: 100%, Horse: 100%, Human: 100%, Mouse: 100%, Rabbit: 100%, Rat: 100%, Zebrafish: 86%
Characteristics:	This is a rabbit polyclonal antibody against Rapgef2. It was validated on Western Blot.
Purification:	Affinity Purified

Target Details

Target:	RAPGEF2
Alternative Name:	Rapgef2 (RAPGEF2 Products)

Target Details

Background: The function remains unknown.
Alias Symbols: 5830453M24Rik, CNRasGEF, Pdzgef1, RA-GEF-1, mKIAA0313, nRapGEP
Protein Interaction Partner: Ywhaz,
Protein Size: 1494

Molecular Weight: 150 kDa

Gene ID: 76089

NCBI Accession: [NM_001099624](#), [NP_001093094](#)

UniProt: [E9QNQ4](#)

Pathways: [Neurotrophin Signaling Pathway](#)

Application Details

Application Notes: Optimal working dilutions should be determined experimentally by the investigator.

Comment: Antigen size: 1494 AA

Restrictions: For Research Use only

Handling

Format: Liquid

Concentration: Lot specific

Buffer: Liquid. Purified antibody supplied in 1x PBS buffer with 0.09 % (w/v) sodium azide and 2 % sucrose.

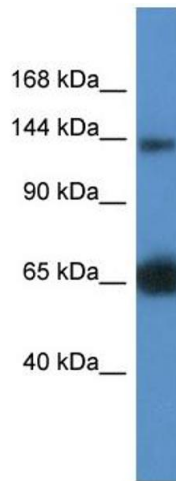
Preservative: Sodium azide

Precaution of Use: This product contains Sodium azide: a POISONOUS AND HAZARDOUS SUBSTANCE which should be handled by trained staff only.

Handling Advice: Avoid repeated freeze-thaw cycles.

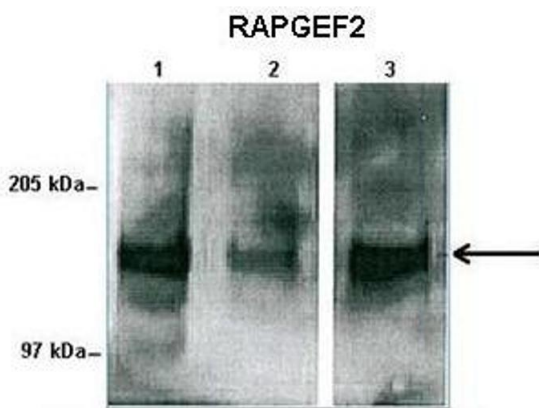
Storage: -20 °C

Storage Comment: For short term use, store at 2-8°C up to 1 week. For long term storage, store at -20°C in small aliquots to prevent freeze-thaw cycles.



Western Blotting

Image 1. WB Suggested Anti-Rapgef2 Antibody Titration:
1.0 ug/ml Positive Control: Mouse Kidney



Western Blotting

Image 2. Human sperm and mouse liver

See Immunoblot 2 Data and Customer Feedback for more information