

Datasheet for ABIN2775572  
**anti-Pannexin 3 antibody (Middle Region)**[Go to Product page](#)

## 1 Image

## Overview

Quantity:	100 µL
Target:	Pannexin 3 (PANX3)
Binding Specificity:	Middle Region
Reactivity:	Human, Mouse, Rat, Rabbit, Dog, Guinea Pig, Horse, Cow, Zebrafish (Danio rerio)
Host:	Rabbit
Clonality:	Polyclonal
Conjugate:	This Pannexin 3 antibody is un-conjugated
Application:	Western Blotting (WB)

## Product Details

Immunogen:	The immunogen is a synthetic peptide directed towards the middle region of human PANX3
Sequence:	IISELDKSYN RSIRLVQHML KIRQKSSDPY VFWNELEKAR KERYFEFPLL
Predicted Reactivity:	Cow: 93%, Dog: 100%, Guinea Pig: 100%, Horse: 100%, Human: 100%, Mouse: 100%, Rabbit: 100%, Rat: 100%, Zebrafish: 86%
Characteristics:	This is a rabbit polyclonal antibody against PANX3. It was validated on Western Blot using a cell lysate as a positive control.
Purification:	Affinity Purified

## Target Details

Target:	Pannexin 3 (PANX3)
---------	--------------------

## Target Details

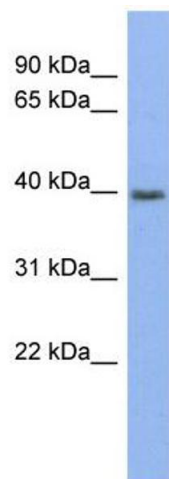
Alternative Name:	PANX3 ( <a href="#">PANX3 Products</a> )
Background:	<p>The protein encoded by this gene belongs to the innexin family. Innexin family members are known to be the structural components of gap junctions.</p> <p>Alias Symbols: PX3</p> <p>Protein Interaction Partner: BCL6,</p> <p>Protein Size: 392</p>
Molecular Weight:	45 kDa
Gene ID:	116337
NCBI Accession:	<a href="#">NM_052959</a> , <a href="#">NP_443191</a>
UniProt:	<a href="#">Q96QZ0</a>

## Application Details

Application Notes:	Optimal working dilutions should be determined experimentally by the investigator.
Comment:	Antigen size: 392 AA
Restrictions:	For Research Use only

## Handling

Format:	Liquid
Concentration:	Lot specific
Buffer:	Liquid. Purified antibody supplied in 1x PBS buffer with 0.09 % (w/v) sodium azide and 2 % sucrose.
Preservative:	Sodium azide
Precaution of Use:	This product contains Sodium azide: a POISONOUS AND HAZARDOUS SUBSTANCE which should be handled by trained staff only.
Handling Advice:	Avoid repeated freeze-thaw cycles.
Storage:	-20 °C
Storage Comment:	For short term use, store at 2-8°C up to 1 week. For long term storage, store at -20°C in small aliquots to prevent freeze-thaw cycles.



Western Blotting

**Image 1.** WB Suggested Anti-PANX3 Antibody Titration:  
0.2-1 ug/ml ELISA Titer: 1:312500 Positive Control: Human  
Spleen