

Datasheet for ABIN2775592

anti-Connexin 31 antibody (N-Term)



[Go to Product page](#)

1 Image

Overview

Quantity:	100 µL
Target:	Connexin 31 (GJB3)
Binding Specificity:	N-Term
Reactivity:	Human, Mouse, Rat, Dog, Pig, Rabbit, Zebrafish (Danio rerio), Cow, Horse
Host:	Rabbit
Clonality:	Polyclonal
Conjugate:	This Connexin 31 antibody is un-conjugated
Application:	Western Blotting (WB)

Product Details

Immunogen:	The immunogen is a synthetic peptide corresponding to a region of Mouse
Sequence:	MDWKKLQDLL SGVNQYSTAF GRIWLSVVFV FRVLVYVVAA ERVWGDEQKD
Predicted Reactivity:	Cow: 79%, Dog: 83%, Horse: 83%, Human: 83%, Mouse: 100%, Pig: 83%, Rabbit: 79%, Rat: 100%, Zebrafish: 92%
Characteristics:	This is a rabbit polyclonal antibody against Gjb3. It was validated on Western Blot.
Purification:	Affinity Purified

Target Details

Target:	Connexin 31 (GJB3)
Alternative Name:	Gjb3 (GJB3 Products)

Target Details

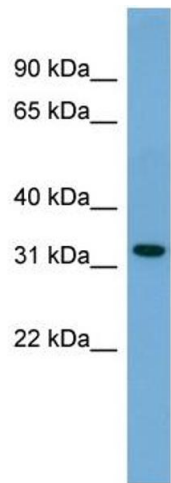
Background:	One gap junction consists of a cluster of closely packed pairs of transmembrane channels, the connexons, through which materials of low MW diffuse from one cell to a neighboring cell. Alias Symbols: Cnx31, Cx31, D4Wsu144e, Gjb-3 Protein Interaction Partner: Tsg101, Protein Size: 270
Molecular Weight:	31 kDa
Gene ID:	14620
NCBI Accession:	NM_008126 , NP_032152
UniProt:	P28231
Pathways:	Sensory Perception of Sound

Application Details

Application Notes:	Optimal working dilutions should be determined experimentally by the investigator.
Comment:	Antigen size: 270 AA
Restrictions:	For Research Use only

Handling

Format:	Liquid
Concentration:	Lot specific
Buffer:	Liquid. Purified antibody supplied in 1x PBS buffer with 0.09 % (w/v) sodium azide and 2 % sucrose.
Preservative:	Sodium azide
Precaution of Use:	This product contains Sodium azide: a POISONOUS AND HAZARDOUS SUBSTANCE which should be handled by trained staff only.
Handling Advice:	Avoid repeated freeze-thaw cycles.
Storage:	-20 °C
Storage Comment:	For short term use, store at 2-8°C up to 1 week. For long term storage, store at -20°C in small aliquots to prevent freeze-thaw cycles.



Western Blotting

Image 1. WB Suggested Anti-Gjb3 Antibody Titration:
0.125ug/ml ELISA Titer: 1:1562500 Positive Control: SP2/O
cell lysate