

Datasheet for ABIN2775594
anti-RGS2 antibody (N-Term)[Go to Product page](#)

2 Images

Overview

Quantity:	100 µL
Target:	RGS2
Binding Specificity:	N-Term
Reactivity:	Human, Rat, Mouse, Cow, Dog, Guinea Pig, Horse, Rabbit, Sheep, Pig
Host:	Rabbit
Clonality:	Polyclonal
Conjugate:	This RGS2 antibody is un-conjugated
Application:	Western Blotting (WB), Immunohistochemistry (IHC)

Product Details

Immunogen:	The immunogen is a synthetic peptide corresponding to a region of Mouse
Sequence:	NSSAPGPKPT GKSKQQTFI KPSPEEAQLW AEAFDELLAS KYGLAAAFRAF
Predicted Reactivity:	Cow: 100%, Dog: 93%, Guinea Pig: 92%, Horse: 93%, Human: 93%, Mouse: 100%, Pig: 93%, Rabbit: 93%, Rat: 100%, Sheep: 100%
Characteristics:	This is a rabbit polyclonal antibody against Rgs2. It was validated on Western Blot.
Purification:	Affinity Purified

Target Details

Target:	RGS2
Alternative Name:	Rgs2 (RGS2 Products)

Target Details

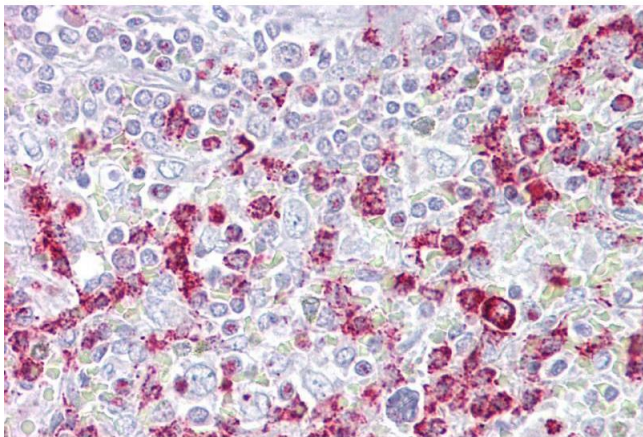
Background:	Rgs2 inhibits signal transduction by increasing the GTPase activity of G protein alpha subunits thereby driving them into their inactive GDP-bound form. It may play a role in leukemogenesis. Alias Symbols: GOS8 Protein Size: 211
Molecular Weight:	24 kDa
Gene ID:	19735
NCBI Accession:	NM_009061 , NP_033087
UniProt:	P41220
Pathways:	Myometrial Relaxation and Contraction , Regulation of G-Protein Coupled Receptor Protein Signaling , Brown Fat Cell Differentiation

Application Details

Application Notes:	Optimal working dilutions should be determined experimentally by the investigator.
Comment:	Antigen size: 211 AA
Restrictions:	For Research Use only

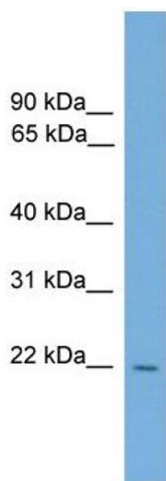
Handling

Format:	Liquid
Concentration:	Lot specific
Buffer:	Liquid. Purified antibody supplied in 1x PBS buffer with 0.09 % (w/v) sodium azide and 2 % sucrose.
Preservative:	Sodium azide
Precaution of Use:	This product contains Sodium azide: a POISONOUS AND HAZARDOUS SUBSTANCE which should be handled by trained staff only.
Handling Advice:	Avoid repeated freeze-thaw cycles.
Storage:	-20 °C
Storage Comment:	For short term use, store at 2-8°C up to 1 week. For long term storage, store at -20°C in small aliquots to prevent freeze-thaw cycles.



Immunohistochemistry

Image 1. Immunohistochemistry with Spleen tissue at an antibody concentration of 5µg/ml using anti-Rgs2 antibody (ARP42826_P050)



Western Blotting

Image 2. WB Suggested Anti-Rgs2 Antibody Titration: 0.2-1 ug/ml Positive Control: Mouse Kidney