

Datasheet for ABIN2775602  
**anti-RGS1 antibody (N-Term)**



[Go to Product page](#)

1 Image

## Overview

Quantity:	100 µL
Target:	RGS1
Binding Specificity:	N-Term
Reactivity:	Human, Mouse, Rat, Cow, Dog, Horse, Pig, Rabbit, Guinea Pig
Host:	Rabbit
Clonality:	Polyclonal
Conjugate:	This RGS1 antibody is un-conjugated
Application:	Western Blotting (WB)

## Product Details

Immunogen:	The immunogen is a synthetic peptide directed towards the N terminal region of mouse Rgs1
Sequence:	GMKSAKSKDI LSAEEVMQWS QSLEKLLANQ TGQNVFGRFL KSEFSEENIE
Predicted Reactivity:	Cow: 86%, Dog: 86%, Guinea Pig: 86%, Horse: 93%, Human: 100%, Mouse: 100%, Pig: 93%, Rabbit: 79%, Rat: 93%
Characteristics:	This is a rabbit polyclonal antibody against Rgs1. It was validated on Western Blot using a cell lysate as a positive control.
Purification:	Protein A purified

## Target Details

Target:	RGS1
---------	------

## Target Details

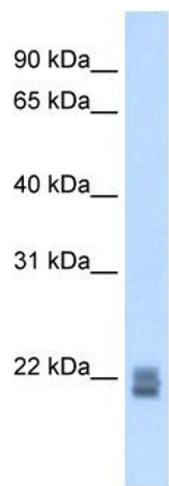
Alternative Name:	Rgs1 ( <a href="#">RGS1 Products</a> )
Background:	<p>Rgs1 inhibits signal transduction by increasing the GTPase activity of G protein alpha subunits thereby driving them into their inactive GDP-bound form.</p> <p>Alias Symbols: BL34</p> <p>Protein Size: 196</p>
Molecular Weight:	22 kDa
Gene ID:	50778
NCBI Accession:	<a href="#">NM_015811</a> , <a href="#">NP_056626</a>
UniProt:	<a href="#">Q9JL25</a>
Pathways:	<a href="#">MAPK Signaling</a> , <a href="#">Myometrial Relaxation and Contraction</a> , <a href="#">Regulation of G-Protein Coupled Receptor Protein Signaling</a> , <a href="#">CXCR4-mediated Signaling Events</a>

## Application Details

Application Notes:	Optimal working dilutions should be determined experimentally by the investigator.
Comment:	Antigen size: 196 AA
Restrictions:	For Research Use only

## Handling

Format:	Liquid
Concentration:	Lot specific
Buffer:	Liquid. Purified antibody supplied in 1x PBS buffer with 0.09 % (w/v) sodium azide and 2 % sucrose.
Preservative:	Sodium azide
Precaution of Use:	This product contains Sodium azide: a POISONOUS AND HAZARDOUS SUBSTANCE which should be handled by trained staff only.
Handling Advice:	Avoid repeated freeze-thaw cycles.
Storage:	-20 °C
Storage Comment:	For short term use, store at 2-8°C up to 1 week. For long term storage, store at -20°C in small aliquots to prevent freeze-thaw cycles.



Western Blotting

**Image 1.** WB Suggested Anti-Rgs1 Antibody Titration:  
5.0ug/ml Positive Control: SP2/0 cell lysate