

Datasheet for ABIN2775603
anti-Claudin 2 antibody (N-Term)



[Go to Product page](#)

2 Images

Overview

Quantity:	100 µL
Target:	Claudin 2 (CLDN2)
Binding Specificity:	N-Term
Reactivity:	Human, Mouse, Rat, Dog, Cow, Horse, Rabbit, Guinea Pig, Sheep
Host:	Rabbit
Clonality:	Polyclonal
Conjugate:	This Claudin 2 antibody is un-conjugated
Application:	Western Blotting (WB)

Product Details

Immunogen:	The immunogen is a synthetic peptide directed towards the N terminal region of human CLDN2
Sequence:	WMECATHSTG ITQCDIYSTL LGLPADIQAA QAMMVTSSAM SSLACIISVV
Predicted Reactivity:	Cow: 93%, Dog: 100%, Guinea Pig: 93%, Horse: 100%, Human: 100%, Mouse: 100%, Rabbit: 100%, Rat: 100%, Sheep: 93%
Characteristics:	This is a rabbit polyclonal antibody against CLDN2. It was validated on Western Blot using a cell lysate as a positive control.
Purification:	Protein A purified

Target Details

Target:	Claudin 2 (CLDN2)
---------	-------------------

Target Details

Alternative Name:	CLDN2 (CLDN2 Products)
Background:	<p>Members of the claudin protein family, such as CLDN2, are expressed in an organ-specific manner and regulate the tissue-specific physiologic properties of tight junctions. Members of the claudin protein family, such as CLDN2, are expressed in an organ-specific manner and regulate the tissue-specific physiologic properties of tight junctions (Sakaguchi et al., 2002).[supplied by OMIM].</p> <p>Alias Symbols: -</p> <p>Protein Interaction Partner: NOTCH2NL, KRTAP10-3, KRT31, LNX1, TJP2, PIAS2, UBE2I, KRTAP4-12, WNK4, TJP1,</p> <p>Protein Size: 230</p>
Molecular Weight:	24 kDa
Gene ID:	9075
NCBI Accession:	NM_020384 , NP_065117
UniProt:	P57739
Pathways:	Hepatitis C

Application Details

Application Notes:	Optimal working dilutions should be determined experimentally by the investigator.
Comment:	Antigen size: 230 AA
Restrictions:	For Research Use only

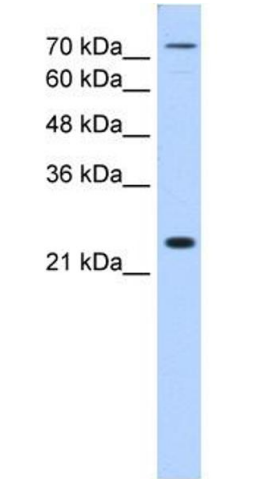
Handling

Format:	Liquid
Concentration:	Lot specific
Buffer:	Liquid. Purified antibody supplied in 1x PBS buffer with 0.09 % (w/v) sodium azide and 2 % sucrose.
Preservative:	Sodium azide
Precaution of Use:	This product contains Sodium azide: a POISONOUS AND HAZARDOUS SUBSTANCE which should be handled by trained staff only.
Handling Advice:	Avoid repeated freeze-thaw cycles.

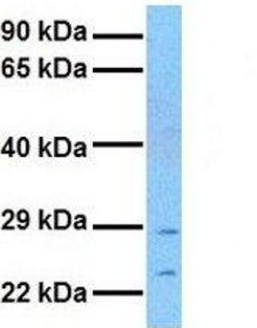
Handling

Storage:	-20 °C
Storage Comment:	For short term use, store at 2-8°C up to 1 week. For long term storage, store at -20°C in small aliquots to prevent freeze-thaw cycles.

Images



CLDN2



Western Blotting

Image 1. WB Suggested Anti-CLDN2 Antibody Titration:
1.25ug/ml Positive Control: HepG2 cell lysate

Western Blotting

Image 2. Host: Rabbit Target Name: CLDN2 Sample Tissue:
Human MCF7 Antibody Dilution: 1.0ug/ml