

Datasheet for ABIN2775606  
**anti-RGS10 antibody (N-Term)**[Go to Product page](#)

## 2 Images

## Overview

Quantity:	100 µL
Target:	RGS10
Binding Specificity:	N-Term
Reactivity:	Human, Rat, Mouse, Cow, Pig
Host:	Rabbit
Clonality:	Polyclonal
Conjugate:	This RGS10 antibody is un-conjugated
Application:	Western Blotting (WB), Flow Cytometry (FACS)

## Product Details

Immunogen:	The immunogen is a synthetic peptide corresponding to a region of Mouse
Sequence:	MFTRAVSRSLR RKRPPSDIHD GDGSSSSGHQ SLKSTAKWAS SLENLLEDPE
Predicted Reactivity:	Cow: 93%, Human: 93%, Mouse: 100%, Pig: 93%, Rat: 100%
Characteristics:	This is a rabbit polyclonal antibody against Rgs10. It was validated on Western Blot.
Purification:	Affinity Purified

## Target Details

Target:	RGS10
Alternative Name:	Rgs10 ( <a href="#">RGS10 Products</a> )
Background:	Rgs10 inhibits signal transduction by increasing the GTPase activity of G protein alpha subunits

## Target Details

thereby driving them into their inactive GDP-bound form. Rgs10 associates specifically with the activated forms of the G protein subunits G(i)-alpha and G(z)-alpha but fails to interact with the structurally and functionally distinct G(s)-alpha subunit. Activity of Rgs10 on G(z)-alpha is inhibited by palmitoylation of the G-protein.

Alias Symbols: 2310010N19Rik, MGC129414

Protein Size: 181

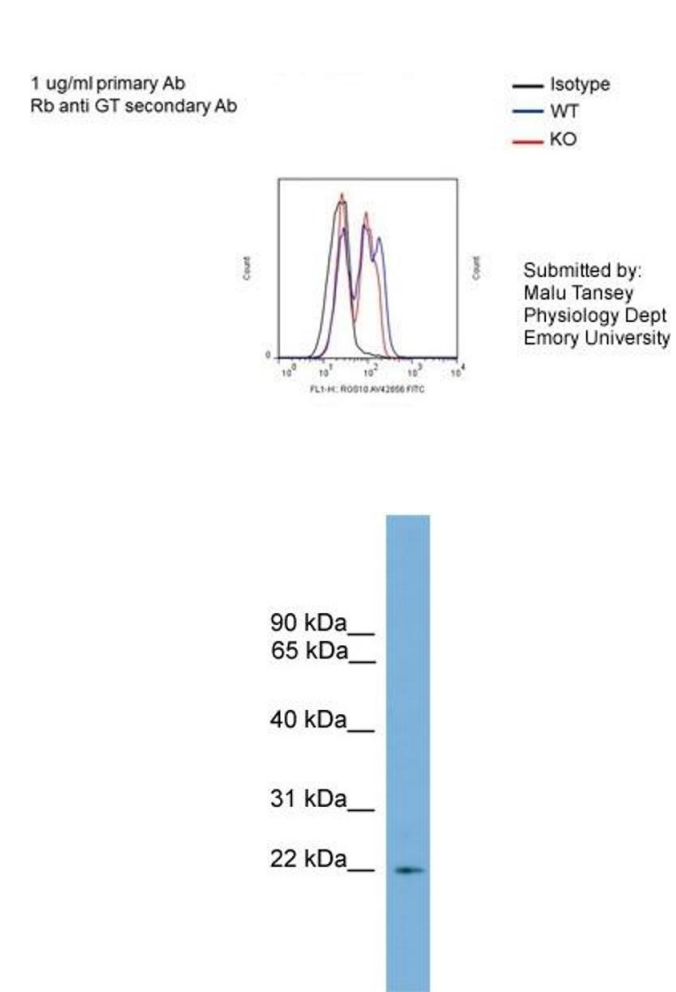
Molecular Weight:	21 kDa
Gene ID:	67865
NCBI Accession:	<a href="#">NM_026418</a> , <a href="#">NP_080694</a>
UniProt:	<a href="#">Q9CQE5</a>
Pathways:	<a href="#">Myometrial Relaxation and Contraction</a> , <a href="#">Regulation of G-Protein Coupled Receptor Protein Signaling</a>

## Application Details

Application Notes:	Optimal working dilutions should be determined experimentally by the investigator.
Comment:	Antigen size: 181 AA
Restrictions:	For Research Use only

## Handling

Format:	Liquid
Concentration:	Lot specific
Buffer:	Liquid. Purified antibody supplied in 1x PBS buffer with 0.09 % (w/v) sodium azide and 2 % sucrose.
Preservative:	Sodium azide
Precaution of Use:	This product contains Sodium azide: a POISONOUS AND HAZARDOUS SUBSTANCE which should be handled by trained staff only.
Handling Advice:	Avoid repeated freeze-thaw cycles.
Storage:	-20 °C
Storage Comment:	For short term use, store at 2-8°C up to 1 week. For long term storage, store at -20°C in small aliquots to prevent freeze-thaw cycles.



Flow Cytometry

**Image 1.** FACS -- Sample type: Bone marrow derived monocytes from mice BV2 cellsDilution: 1ug/mL

Western Blotting

**Image 2.** WB Suggested Anti-Rgs10 Antibody Titration: 0.2-1 ug/ml ELISA Titer: 1:1562500 Positive Control: Mouse Thymus