

[Go to Product page](#)

Datasheet for ABIN2775609 anti-GJE1 antibody (N-Term)

2 Images

Overview

Quantity:	100 µL
Target:	GJE1
Binding Specificity:	N-Term
Reactivity:	Mouse, Rat
Host:	Rabbit
Clonality:	Polyclonal
Conjugate:	This GJE1 antibody is un-conjugated
Application:	Western Blotting (WB)

Product Details

Immunogen:	The immunogen is a synthetic peptide corresponding to a region of Mouse
Sequence:	GFRLILVSS GPGVFGNDEN EFICHLGQPG CKTICYDVFR PLSPLRFWAF
Predicted Reactivity:	Mouse: 100%, Rat: 100%
Characteristics:	This is a rabbit polyclonal antibody against Gje1. It was validated on Western Blot.
Purification:	Affinity Purified

Target Details

Target:	GJE1
Alternative Name:	Gje1 (GJE1 Products)
Background:	One gap junction consists of a cluster of closely packed pairs of transmembrane channels, the

Target Details

connexons, through which materials of low MW diffuse from one cell to a neighboring cell.

Alias Symbols: Cx29, Gje1

Protein Size: 269

Molecular Weight: 30 kDa

Gene ID: 118446

NCBI Accession: [NM_080450](#), [NP_536698](#)

UniProt: [Q921C1](#)

Pathways: [Sensory Perception of Sound](#)

Application Details

Application Notes: Optimal working dilutions should be determined experimentally by the investigator.

Comment: Antigen size: 269 AA

Restrictions: For Research Use only

Handling

Format: Liquid

Concentration: Lot specific

Buffer: Liquid. Purified antibody supplied in 1x PBS buffer with 0.09 % (w/v) sodium azide and 2 % sucrose.

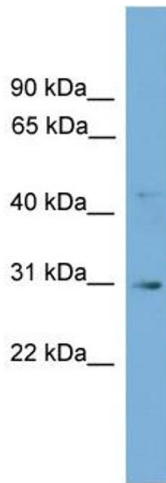
Preservative: Sodium azide

Precaution of Use: This product contains Sodium azide: a POISONOUS AND HAZARDOUS SUBSTANCE which should be handled by trained staff only.

Handling Advice: Avoid repeated freeze-thaw cycles.

Storage: -20 °C

Storage Comment: For short term use, store at 2-8°C up to 1 week. For long term storage, store at -20°C in small aliquots to prevent freeze-thaw cycles.



Western Blotting

Image 1. WB Suggested Anti-Gje1 Antibody Titration: 0.2-1 ug/ml

ELISA Titer: 1:62500

Positive Control: Mouse Spleen



Rabbit Anti-Gje1 Antibody
Catalog Number: ARP42864
Lot Number: QC12285
Lane: Mouse Spleen Lysate

Antibody Titration: 1.0µg/ml
Gel Concentration: 12%

Western Blotting

Image 2. WB Suggested Anti-Gje1 Antibody Titration: 0.2-1 ug/ml ELISA Titer: 1:62500 Positive Control: Mouse Spleen