



[Go to Product page](#)

Datasheet for ABIN2775615

anti-PARD6A antibody (N-Term)

2 Images

Overview

Quantity:	100 µL
Target:	PARD6A
Binding Specificity:	N-Term
Reactivity:	Human, Mouse, Rat, Cow, Horse, Rabbit, Guinea Pig, Dog
Host:	Rabbit
Clonality:	Polyclonal
Conjugate:	This PARD6A antibody is un-conjugated
Application:	Western Blotting (WB)

Product Details

Immunogen:	The immunogen is a synthetic peptide directed towards the N terminal region of human PARD6A
Sequence:	MARPQRTPAR SPDSIVEVKS KFDAEFRRFA LPRASVSGFQ EFSRLLRAVH
Predicted Reactivity:	Cow: 100%, Dog: 93%, Guinea Pig: 93%, Horse: 100%, Human: 100%, Mouse: 100%, Rabbit: 100%, Rat: 100%
Characteristics:	This is a rabbit polyclonal antibody against PARD6A. It was validated on Western Blot using a cell lysate as a positive control.
Purification:	Affinity Purified

Target Details

Target:	PARD6A
---------	--------

Target Details

Alternative Name: [PARD6A \(PARD6A Products\)](#)

Background: This gene is a member of the PAR6 family and encodes a protein with a PSD95/Discs-large/ZO1 (PDZ) domain and a semi-Cdc42/Rac interactive binding (CRIB) domain. This cell membrane protein is involved in asymmetrical cell division and cell polarization processes as a member of a multi-protein complex. The protein also has a role in the epithelial-to-mesenchymal transition (EMT) that characterizes the invasive phenotype associated with metastatic carcinomas. Alternate transcriptional splice variants, encoding different isoforms, have been characterized.

Alias Symbols: PAR-6A, PAR6, PAR6C, PAR6alpha, TAX40, TIP-40

Protein Interaction Partner: PRKCI, WDR83, PRKCZ, FBXO31, PARD3, UBC, TUBG1, ARHGAP17, VHL, MAP2K5, TJP1, SMURF1, TGFB1, WDR92, PARD6B, PDRG1, RPAP3, MARK4, PIH1D1, SUGT1, YWHAZ, YWHAH, LLGL1, LLGL2, MARK2, CDC42, CRB3, ECT2, PLCB1, RHOQ, PRKCH, RAC1, CDH5, PLCB3, TGFBR1, TCP10, PRKC

Protein Size: 345

Molecular Weight: 37 kDa

Gene ID: 50855

NCBI Accession: [NM_001037281](#), [NP_001032358](#)

UniProt: [Q3TY70](#)

Pathways: [Cell-Cell Junction Organization](#)

Application Details

Application Notes: Optimal working dilutions should be determined experimentally by the investigator.

Comment: Antigen size: 345 AA

Restrictions: For Research Use only

Handling

Format: Liquid

Concentration: Lot specific

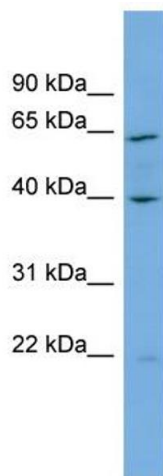
Buffer: Liquid. Purified antibody supplied in 1x PBS buffer with 0.09 % (w/v) sodium azide and 2 % sucrose.

Preservative: Sodium azide

Handling

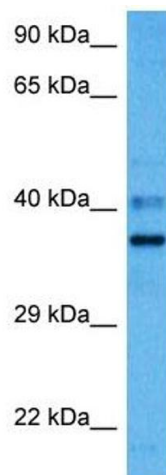
Precaution of Use:	This product contains Sodium azide: a POISONOUS AND HAZARDOUS SUBSTANCE which should be handled by trained staff only.
Handling Advice:	Avoid repeated freeze-thaw cycles.
Storage:	-20 °C
Storage Comment:	For short term use, store at 2-8°C up to 1 week. For long term storage, store at -20°C in small aliquots to prevent freeze-thaw cycles.

Images



Western Blotting

Image 1. WB Suggested Anti-PARD6A Antibody Titration: 0.2-1 ug/ml ELISA Titer: 1:62500 Positive Control: NCI-H226 cell lysate



Western Blotting

Image 2. Host: Mouse Target Name: PARD6A Sample Tissue: Mouse Liver Antibody Dilution: 1ug/ml