



[Go to Product page](#)

Datasheet for ABIN2775616

## anti-PARD6A antibody (C-Term)

### 1 Image

#### Overview

Quantity:	100 µL
Target:	PARD6A
Binding Specificity:	C-Term
Reactivity:	Human, Mouse, Rat, Cow, Horse, Rabbit, Guinea Pig, Saccharomyces cerevisiae
Host:	Rabbit
Clonality:	Polyclonal
Conjugate:	This PARD6A antibody is un-conjugated
Application:	Western Blotting (WB)

#### Product Details

Immunogen:	The immunogen is a synthetic peptide directed towards the C-terminal region of Mouse Pard6a
Sequence:	SSVGGPTDP DSDDDSSDLV IENRHPPCSN GLSQGPLCWD LQPGCLLPGA
Predicted Reactivity:	Cow: 100%, Guinea Pig: 93%, Horse: 93%, Human: 100%, Mouse: 86%, Rabbit: 93%, Rat: 87%, Yeast: 85%
Characteristics:	This is a rabbit polyclonal antibody against Pard6a. It was validated on Western Blot.
Purification:	Affinity Purified

#### Target Details

Target:	PARD6A
Alternative Name:	Pard6a ( <a href="#">PARD6A Products</a> )

## Target Details

---

Background:	<p>The function of this protein remains unknown.</p> <p>Alias Symbols: 0710008C04Rik, 2610010A15Rik, PAR6alpha, Par-6, Par6, Par6c, TAX40, Tip-40</p> <p>Protein Interaction Partner: Pklr, Dvl2, Smurf2, Srsf1, Pard3, Smurf1, Prkcz, Vhl, UBC, TGFBR1, Map2k5, Llg1, Prkci,</p> <p>Protein Size: 330</p>
Molecular Weight:	35 kDa
Gene ID:	56513
NCBI Accession:	<a href="#">NM_001047436</a> , <a href="#">NP_001040901</a>
UniProt:	<a href="#">D3Z2R1</a>
Pathways:	<a href="#">Cell-Cell Junction Organization</a>

## Application Details

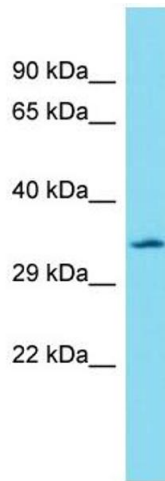
---

Application Notes:	Optimal working dilutions should be determined experimentally by the investigator.
Comment:	Antigen size: 330 AA
Restrictions:	For Research Use only

## Handling

---

Format:	Liquid
Concentration:	Lot specific
Buffer:	Liquid. Purified antibody supplied in 1x PBS buffer with 0.09 % (w/v) sodium azide and 2 % sucrose.
Preservative:	Sodium azide
Precaution of Use:	This product contains Sodium azide: a POISONOUS AND HAZARDOUS SUBSTANCE which should be handled by trained staff only.
Handling Advice:	Avoid repeated freeze-thaw cycles.
Storage:	-20 °C
Storage Comment:	For short term use, store at 2-8°C up to 1 week. For long term storage, store at -20°C in small aliquots to prevent freeze-thaw cycles.



### Western Blotting

**Image 1.** Host: Rabbit Target Name: Pard6a Sample Type: Mouse Thymus lysates Antibody Dilution: 1.0ug/ml