

Datasheet for ABIN2775620

**anti-Occludin antibody (N-Term)**[Go to Product page](#)**2** Images**1** Publication

## Overview

Quantity:	100 µL
Target:	Occludin (OCLN)
Binding Specificity:	N-Term
Reactivity:	Human, Mouse, Rat, Cow, Dog, Guinea Pig, Horse, Rabbit, Zebrafish (Danio rerio)
Host:	Rabbit
Clonality:	Polyclonal
Conjugate:	This Occludin antibody is un-conjugated
Application:	Western Blotting (WB)

## Product Details

Immunogen:	The immunogen is a synthetic peptide directed towards the N terminal region of human OCLN
Sequence:	VRPMLSQPAY SFYPEDEILH FYKWTSPPGV IRILSMLIIV MCIAIFACVA
Predicted Reactivity:	Cow: 100%, Dog: 100%, Guinea Pig: 100%, Horse: 100%, Human: 100%, Mouse: 100%, Rabbit: 100%, Rat: 100%, Zebrafish: 82%
Characteristics:	This is a rabbit polyclonal antibody against OCLN. It was validated on Western Blot using a cell lysate as a positive control.
Purification:	Affinity Purified

## Target Details

Target:	Occludin (OCLN)
---------	-----------------

## Target Details

Alternative Name:	OCLN ( <a href="#">OCLN Products</a> )
Background:	<p>OCLN is an integral membrane protein which is located at tight junctions. This protein may be involved in the formation and maintenance of the tight junction. The possibility of several alternatively spliced products has been suggested but the full nature of these products has not been described. This gene encodes an integral membrane protein which is located at tight junctions. This protein may be involved in the formation and maintenance of the tight junction. The possibility of several alternatively spliced products has been suggested but the full nature of these products has not been described. Publication Note: This RefSeq record includes a subset of the publications that are available for this gene. Please see the Entrez Gene record to access additional publications.</p> <p>Alias Symbols: BLCPMG</p> <p>Protein Size: 522</p>
Molecular Weight:	59 kDa
Gene ID:	4950
NCBI Accession:	<a href="#">NM_002538</a> , <a href="#">NP_002529</a>
UniProt:	<a href="#">Q16625</a>
Pathways:	<a href="#">Cell-Cell Junction Organization</a> , <a href="#">Hepatitis C</a>

## Application Details

Application Notes:	Optimal working dilutions should be determined experimentally by the investigator.
Comment:	Antigen size: 522 AA
Restrictions:	For Research Use only

## Handling

Format:	Liquid
Concentration:	Lot specific
Buffer:	Liquid. Purified antibody supplied in 1x PBS buffer with 0.09 % (w/v) sodium azide and 2 % sucrose.
Preservative:	Sodium azide
Precaution of Use:	This product contains Sodium azide: a POISONOUS AND HAZARDOUS SUBSTANCE which should be handled by trained staff only.

## Handling

Handling Advice:	Avoid repeated freeze-thaw cycles.
Storage:	-20 °C
Storage Comment:	For short term use, store at 2-8°C up to 1 week. For long term storage, store at -20°C in small aliquots to prevent freeze-thaw cycles.

## Publications

Product cited in:	Yang, Liu, Miao, Yang, Fu, Dou, Cai, Zong, Tan, Chen, Wang: "Induction of VEGFA and Snail-1 by meningitic Escherichia coli mediates disruption of the blood-brain barrier." in: <b>Oncotarget</b> , Vol. 7 , Issue 39, pp. 63839-63855, (2016) ( <a href="#">PubMed</a> ).
-------------------	--

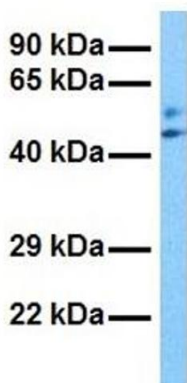
## Images



### Western Blotting

**Image 1.** WB Suggested Anti-OCN Antibody Titration: 0.2-1 ug/ml ELISA Titer: 1:312500 Positive Control: COLO205 cell lysate

## OCN



Host: Rabbit  
Target Name: OCN  
Sample Type: Human Fetal Liver  
Antibody Dilution: 1ug/ml

### Western Blotting

**Image 2.** Host: Rabbit Target Name: OCN Sample Tissue: Human Fetal Liver Antibody Dilution: 1.0ug/ml