

Datasheet for ABIN2775621
anti-RAB13 antibody (Middle Region)[Go to Product page](#)

1 Image

Overview

Quantity:	100 µL
Target:	RAB13
Binding Specificity:	Middle Region
Reactivity:	Human, Mouse, Rat, Horse, Rabbit, Cow, Zebrafish (Danio rerio), Guinea Pig, Dog
Host:	Rabbit
Clonality:	Polyclonal
Conjugate:	This RAB13 antibody is un-conjugated
Application:	Western Blotting (WB)

Product Details

Sequence:	TDEKSFENIQ NWMKSIKENA SAGVERLLLG NKCDMEAKRQ VQREQAEKLA
Predicted Reactivity:	Cow: 100%, Dog: 100%, Guinea Pig: 100%, Horse: 100%, Human: 100%, Mouse: 100%, Rabbit: 100%, Rat: 100%, Zebrafish: 86%
Characteristics:	This is a rabbit polyclonal antibody against Rab13. It was validated on Western Blot.
Purification:	Affinity Purified

Target Details

Target:	RAB13
Alternative Name:	Rab13 (RAB13 Products)
Background:	Rab13 could participate in polarized transport, in the assembly and/or the activity of tight

Target Details

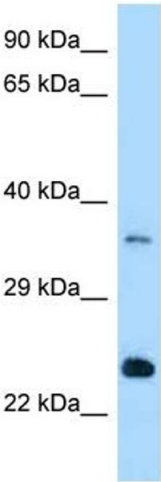
	junctions. Alias Symbols: 0610007N03Rik, B230212B15Rik Protein Interaction Partner: SMURF2, TGFBR1, SMAD4, Protein Size: 202
Molecular Weight:	23 kDa
Gene ID:	68328
NCBI Accession:	NM_026677 , NP_080953
UniProt:	Q9DD03
Pathways:	Cell-Cell Junction Organization

Application Details

Application Notes:	Optimal working dilutions should be determined experimentally by the investigator.
Comment:	Antigen size: 202 AA
Restrictions:	For Research Use only

Handling

Format:	Liquid
Concentration:	Lot specific
Buffer:	Liquid. Purified antibody supplied in 1x PBS buffer with 0.09 % (w/v) sodium azide and 2 % sucrose.
Preservative:	Sodium azide
Precaution of Use:	This product contains Sodium azide: a POISONOUS AND HAZARDOUS SUBSTANCE which should be handled by trained staff only.
Handling Advice:	Avoid repeated freeze-thaw cycles.
Storage:	-20 °C
Storage Comment:	For short term use, store at 2-8°C up to 1 week. For long term storage, store at -20°C in small aliquots to prevent freeze-thaw cycles.



Western Blotting

Image 1. WB Suggested Anti-Rab13 Antibody Titration: 1.0 ug/ml Positive Control: Mouse Heart