

Datasheet for ABIN2775624
anti-Symplekin antibody (Middle Region)[Go to Product page](#)

2 Images

Overview

Quantity:	100 µL
Target:	Symplekin (SYMPK)
Binding Specificity:	Middle Region
Reactivity:	Human, Rat, Pig
Host:	Rabbit
Clonality:	Polyclonal
Conjugate:	This Symplekin antibody is un-conjugated
Application:	Western Blotting (WB)

Product Details

Immunogen:	The immunogen is a synthetic peptide directed towards the middle region of human SYMPK
Sequence:	GPLPKETAAG GLTLKEERSP QTLAPVGEDA MKTPSPAED AREPEAKGNS
Predicted Reactivity:	Human: 100%, Pig: 79%, Rat: 82%
Characteristics:	This is a rabbit polyclonal antibody against SYMPK. It was validated on Western Blot using a cell lysate as a positive control.
Purification:	Affinity Purified

Target Details

Target:	Symplekin (SYMPK)
Alternative Name:	SYMPK (SYMPK Products)

Target Details

Background:	<p>SYMPK is a nuclear protein that functions in the regulation of polyadenylation and promotes gene expression. The protein forms a high-molecular weight complex with components of the polyadenylation machinery. It is thought to serve as a scaffold for recruiting regulatory factors to the polyadenylation complex. It also participates in 3'-end maturation of histone mRNAs, which do not undergo polyadenylation. The protein also localizes to the cytoplasmic plaques of tight junctions in some cell types. This gene encodes a nuclear protein that functions in the regulation of polyadenylation and promotes gene expression. The protein forms a high-molecular weight complex with components of the polyadenylation machinery. It is thought to serve as a scaffold for recruiting regulatory factors to the polyadenylation complex. It also participates in 3'-end maturation of histone mRNAs, which do not undergo polyadenylation. The protein also localizes to the cytoplasmic plaques of tight junctions in some cell types.</p> <p>Publication Note: This RefSeq record includes a subset of the publications that are available for this gene. Please see the Entrez Gene record to access additional publications.</p> <p>Alias Symbols: FLJ27092, SPK, SYM</p> <p>Protein Interaction Partner: KAT6A, VCP, KMT2A, UBC, WWOX, RPA3, RPA2, RPA1, SSU72, CPSF2, CPSF3, TOP1, SUMO1, SIRT7, SUMO2, SMARCAD1, CSTF2, HTT, HSF1,</p> <p>Protein Size: 1274</p>
-------------	---

Molecular Weight:	141 kDa
-------------------	---------

Gene ID:	8189
----------	------

NCBI Accession:	NM_004819 , NP_004810
-----------------	---

UniProt:	Q92797
----------	------------------------

Application Details

Application Notes:	Optimal working dilutions should be determined experimentally by the investigator.
--------------------	--

Comment:	Antigen size: 1274 AA
----------	-----------------------

Restrictions:	For Research Use only
---------------	-----------------------

Handling

Format:	Liquid
---------	--------

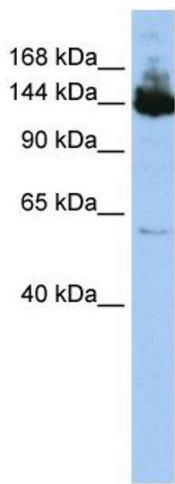
Concentration:	Lot specific
----------------	--------------

Buffer:	Liquid. Purified antibody supplied in 1x PBS buffer with 0.09 % (w/v) sodium azide and 2 % sucrose.
---------	---

Handling

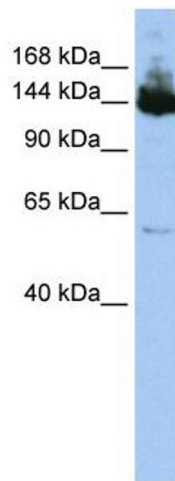
Preservative:	Sodium azide
Precaution of Use:	This product contains Sodium azide: a POISONOUS AND HAZARDOUS SUBSTANCE which should be handled by trained staff only.
Handling Advice:	Avoid repeated freeze-thaw cycles.
Storage:	-20 °C
Storage Comment:	For short term use, store at 2-8°C up to 1 week. For long term storage, store at -20°C in small aliquots to prevent freeze-thaw cycles.

Images



Western Blotting

Image 1. WB Suggested Anti-SYMPK Antibody Titration: 0.2-1 ug/ml ELISA Titer: 1:312500 Positive Control: HepG2 cell lysate SYMPK is supported by BioGPS gene expression data to be expressed in HepG2



Western Blotting

Image 2. WB Suggested Anti-SYMPK Antibody Titration: 0.2-1 µg/mL ELISA Titer: 1:12500 Positive Control: HepG2 cell lysate SYMPK is supported by BioGPS gene expression data to be expressed in HepG2