

Datasheet for ABIN2775625
anti-LIN7C antibody (N-Term)

3 Images

[Go to Product page](#)

Overview

Quantity:	100 µL
Target:	LIN7C
Binding Specificity:	N-Term
Reactivity:	Human, Mouse, Rat, Rabbit, Cow, Dog, Guinea Pig, Horse, Zebrafish (Danio rerio)
Host:	Rabbit
Clonality:	Polyclonal
Conjugate:	This LIN7C antibody is un-conjugated
Application:	Western Blotting (WB), Immunohistochemistry (IHC)

Product Details

Immunogen:	The immunogen is a synthetic peptide directed towards the N terminal region of human LIN7C
Sequence:	MAALGEPVRL ERDICRAIEL LEKLQRSGEV PPQKLQALQR VLQSEFCNAV
Predicted Reactivity:	Cow: 100%, Dog: 100%, Guinea Pig: 100%, Horse: 100%, Human: 100%, Mouse: 100%, Rabbit: 100%, Rat: 100%, Zebrafish: 93%
Characteristics:	This is a rabbit polyclonal antibody against LIN7C. It was validated on Western Blot using a cell lysate as a positive control.
Purification:	Affinity Purified

Target Details

Target:	LIN7C
---------	-------

Target Details

Alternative Name:	LIN7C (LIN7C Products)
Background:	<p>LIN7C plays a role in establishing and maintaining the asymmetric distribution of channels and receptors at the plasma membrane of polarized cells. It forms membrane-associated multiprotein complexes that may regulate delivery and recycling of proteins to the correct membrane domains. The tripartite complex composed of LIN7 (LIN7A, LIN7B or LIN7C), CASK and APBA1 may have the potential to couple synaptic vesicle exocytosis to cell adhesion in brain. LIN7C ensures the proper localization of GRIN2B (subunit 2B of the NMDA receptor) to neuronal postsynaptic density and may function in localizing synaptic vesicles at synapses where it is recruited by beta-catenin and cadherin. It is also required to localize Kir2 channels, GABA transporter (SLC6A12) and EGFR/ERBB1, ERBB2, ERBB3 and ERBB4 to the basolateral membrane of epithelial cells.</p> <p>Alias Symbols: FLJ11215, LIN-7-C, LIN-7C, MALS-3, VELI3, MALS3</p> <p>Protein Interaction Partner: UBC, AMOTL2, LATS2, YAP1, Wwtr1, CFTR, ELAVL1, AMOT, UIMC1, SPATA2, KCNJ12, BAIAP2, ABCA1, HTR2C, CASK, KCNJ4, DLG1, APBA1,</p> <p>Protein Size: 197</p>
Molecular Weight:	22 kDa
Gene ID:	55327
NCBI Accession:	NM_018362 , NP_060832
UniProt:	Q9NUP9
Pathways:	Synaptic Membrane

Application Details

Application Notes:	Optimal working dilutions should be determined experimentally by the investigator.
Comment:	Antigen size: 197 AA
Restrictions:	For Research Use only

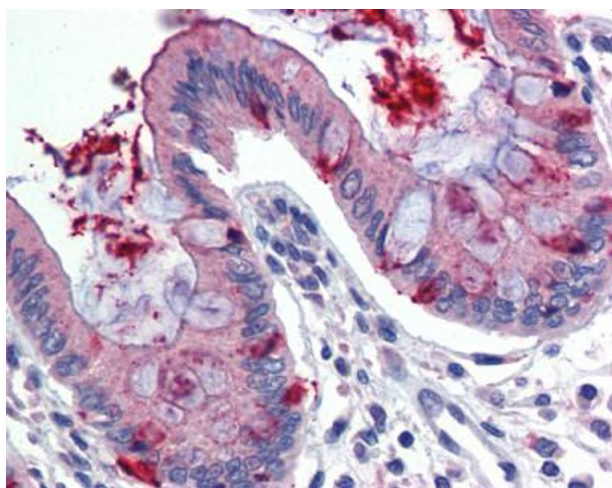
Handling

Format:	Liquid
Concentration:	Lot specific
Buffer:	Liquid. Purified antibody supplied in 1x PBS buffer with 0.09 % (w/v) sodium azide and 2 % sucrose.

Handling

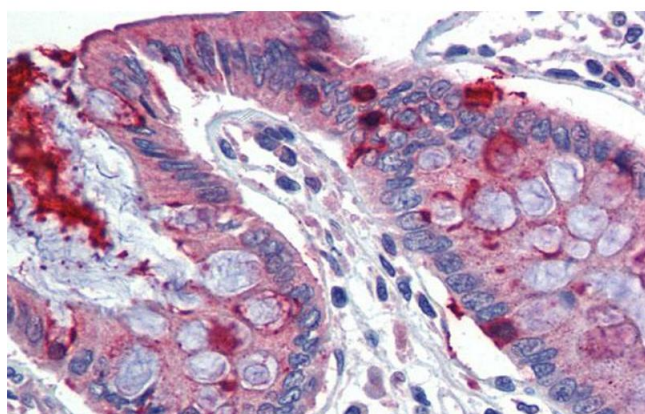
Preservative:	Sodium azide
Precaution of Use:	This product contains Sodium azide: a POISONOUS AND HAZARDOUS SUBSTANCE which should be handled by trained staff only.
Handling Advice:	Avoid repeated freeze-thaw cycles.
Storage:	-20 °C
Storage Comment:	For short term use, store at 2-8°C up to 1 week. For long term storage, store at -20°C in small aliquots to prevent freeze-thaw cycles.

Images



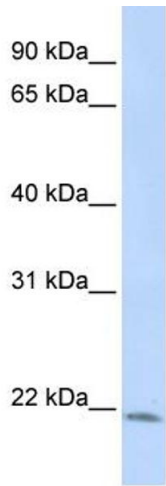
Immunohistochemistry

Image 1.



Immunohistochemistry

Image 2. Immunohistochemistry with Human Colon lysate tissue at an antibody concentration of 5.0ug/ml using anti-LIN7C antibody



Western Blotting

Image 3. WB Suggested Anti-LIN7C Antibody Titration: 1 ug/ml Positive Control: HepG2 cell lysate