



[Go to Product page](#)

Datasheet for ABIN2775627

anti-PARD3 antibody (Middle Region)

2 Images

Overview

Quantity:	100 µL
Target:	PARD3
Binding Specificity:	Middle Region
Reactivity:	Human, Guinea Pig
Host:	Rabbit
Clonality:	Polyclonal
Conjugate:	This PARD3 antibody is un-conjugated
Application:	Western Blotting (WB), Immunohistochemistry (IHC)

Product Details

Immunogen:	The immunogen is a synthetic peptide directed towards the middle region of human PARD3
Sequence:	EQQMKKQPPS EGPSNYDSYK KVQDPSYAPP KGPFRQDVPP SPSQVARLNR
Predicted Reactivity:	Guinea Pig: 79%, Human: 100%
Characteristics:	This is a rabbit polyclonal antibody against PARD3. It was validated on Western Blot using a cell lysate as a positive control.
Purification:	Affinity Purified

Target Details

Target:	PARD3
Alternative Name:	PARD3 (PARD3 Products)

Target Details

Background:	<p>PARD proteins, which were first identified in <i>C. elegans</i>, are essential for asymmetric cell division and polarized growth, whereas CDC42 (MIM 116952) mediates the establishment of cell polarity. The CDC42 GTPase, which is controlled by nucleotide exchange</p> <p>Alias Symbols: ASIP, Baz, Bazooka, FLJ21015, PAR3, PAR3alpha, PARD3A, SE2-5L16, SE2-5LT1, SE2-5T2</p> <p>Protein Interaction Partner: UBC, AMOTL2, LATS2, YAP1, LATS1, YWHAB, INADL, PRKCI, GAB1, MARK2, PARD6A, YWHAE, AMOT, ARHGAP17, VHL, TJP1, Smurf1, Smurf2, ANP32E, PSME3, RPS18, RPS3, PSME2, PFKP, KPNA4, HSPD1, HSPA8, HSPA6, SIAH1, PARD6B, PARD6G, CCDC88A, RASSF8, PNMA2, DCAF7, PNMA1,</p> <p>Protein Size: 1356</p>
Molecular Weight:	151 kDa
Gene ID:	56288
NCBI Accession:	NM_019619 , NP_062565
UniProt:	Q8TEW0
Pathways:	Cell-Cell Junction Organization

Application Details

Application Notes:	Optimal working dilutions should be determined experimentally by the investigator.
Comment:	Antigen size: 1356 AA
Restrictions:	For Research Use only

Handling

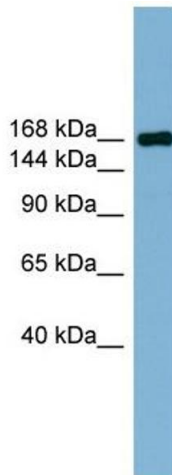
Format:	Liquid
Concentration:	Lot specific
Buffer:	Liquid. Purified antibody supplied in 1x PBS buffer with 0.09 % (w/v) sodium azide and 2 % sucrose.
Preservative:	Sodium azide
Precaution of Use:	This product contains Sodium azide: a POISONOUS AND HAZARDOUS SUBSTANCE which should be handled by trained staff only.
Handling Advice:	Avoid repeated freeze-thaw cycles.

Handling

Storage: -20 °C

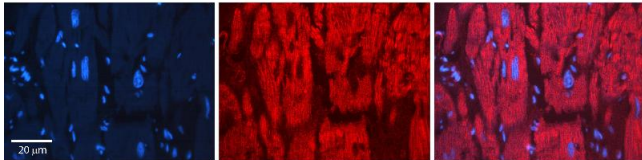
Storage Comment: For short term use, store at 2-8°C up to 1 week. For long term storage, store at -20°C in small aliquots to prevent freeze-thaw cycles.

Images



Western Blotting

Image 1. WB Suggested Anti-PARD3 Antibody Titration: 0.2-1 ug/ml Positive Control: Human Thymus



Immunohistochemistry

Image 2. Rabbit Anti-PARD3 Antibody Formalin Fixed Paraffin Embedded Tissue: Human heart Tissue Observed Staining: Cytoplasmic Primary Antibody Concentration: 1:100 Other Working Concentrations: 1:600 Secondary Antibody: Donkey anti-Rabbit-Cy3 Secondary Antibody Concentration: 1:200 Magnification: 20X Exposure Time: 0.5 - 2.0 sec