

Datasheet for ABIN2775630  
**anti-PARD6B antibody (N-Term)**

## 3 Images

[Go to Product page](#)

## Overview

Quantity:	100 µL
Target:	PARD6B
Binding Specificity:	N-Term
Reactivity:	Human, Mouse, Rat, Cow, Dog, Guinea Pig, Horse, Rabbit, Zebrafish (Danio rerio)
Host:	Rabbit
Clonality:	Polyclonal
Conjugate:	This PARD6B antibody is un-conjugated
Application:	Western Blotting (WB), Immunohistochemistry (IHC)

## Product Details

Immunogen:	The immunogen is a synthetic peptide directed towards the N-terminal region of MOUSE Pard6b
Sequence:	SKFGAEFRRF SLERSKPGKF EEFYGLLQHV HKIPNVDVLV GYADIHGDLL
Predicted Reactivity:	Cow: 86%, Dog: 100%, Guinea Pig: 100%, Horse: 93%, Human: 100%, Mouse: 100%, Rabbit: 77%, Rat: 100%, Zebrafish: 85%
Characteristics:	This is a rabbit polyclonal antibody against Pard6b. It was validated on Western Blot.
Purification:	Affinity Purified

## Target Details

Target:	PARD6B
---------	--------

## Target Details

Alternative Name:	Pard6b ( <a href="#">PARD6B Products</a> )
Background:	<p>Pard6b is a adapter protein involved in asymmetrical cell division and cell polarization processes. It is probably involved in formation of epithelial tight junctions. Association with PARD3 may prevent the interaction of PARD3 with F11R/JAM1, thereby preventing tight junction assembly. The PARD6-PARD3 complex links GTP-bound Rho small GTPases to atypical protein kinase C proteins.</p> <p>Alias Symbols: AV025615, Par6b</p> <p>Protein Interaction Partner: Llg1l,</p> <p>Protein Size: 371</p>
Molecular Weight:	40 kDa
Gene ID:	58220
NCBI Accession:	<a href="#">NM_021409</a> , <a href="#">NP_067384</a>
UniProt:	<a href="#">Q9JK83</a>
Pathways:	<a href="#">Cell-Cell Junction Organization</a>

## Application Details

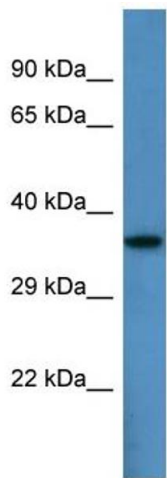
Application Notes:	Optimal working dilution should be determined by the investigator.
Restrictions:	For Research Use only

## Handling

Format:	Liquid
Concentration:	1 mg/mL
Buffer:	Liquid. Purified antibody supplied in 1x PBS buffer with 0.09 % (w/v) sodium azide and 2 % sucrose.
Preservative:	Sodium azide
Precaution of Use:	This product contains Sodium azide: a POISONOUS AND HAZARDOUS SUBSTANCE which should be handled by trained staff only.
Handling Advice:	Avoid repeat freeze-thaw cycles.
Storage:	-20 °C
Storage Comment:	For short term use, store at 2-8°C up to 1 week. For long term storage, store at -20°C in small

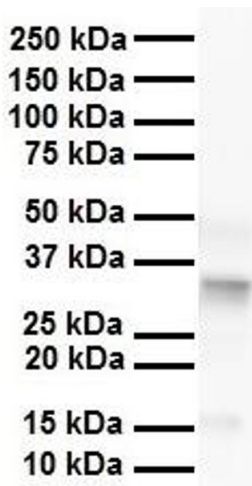
aliquots to prevent freeze-thaw cycles.

Images



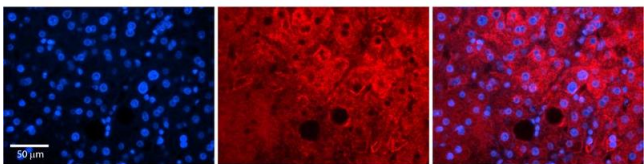
Western Blotting

**Image 1.** Host: Rabbit Target Name: Pard6b Sample Type: Mouse Heart lysates Antibody Dilution: 1.0ug/ml



Western Blotting

**Image 2.** WB Suggested Anti-Pard6b antibody Titration: 1 ug/mL Sample Type: Human liver



Immunohistochemistry

**Image 3.** Rabbit Anti-Pard6b Antibody Formalin Fixed Paraffin Embedded Tissue: Human Adult liver Observed Staining: Cytoplasmic,Membrane Primary Antibody Concentration: 1:600 Secondary Antibody: Donkey anti-Rabbit-Cy2/3 Secondary Antibody Concentration: 1:200 Magnification: 20X Exposure Time: 0.5 – 2.0 sec Protocol located in Reviews and Data.