



[Go to Product page](#)

Datasheet for ABIN2775647  
**anti-ube3a antibody (N-Term)**

2 Images

Overview

Quantity:	100 µL
Target:	ube3a
Binding Specificity:	N-Term
Reactivity:	Human, Mouse, Rat, Rabbit, Dog, Guinea Pig, Horse, Zebrafish (Danio rerio), Cow, Goat, Saccharomyces cerevisiae
Host:	Rabbit
Clonality:	Polyclonal
Conjugate:	This ube3a antibody is un-conjugated
Application:	Western Blotting (WB)

Product Details

Immunogen:	The immunogen is a synthetic peptide directed towards the N terminal region of human UBE3A
Sequence:	SLQAKDEDKD EDEKEKAACS AAAMEEDSEA SSSRIGDSSQ GDNNLQKLGP
Predicted Reactivity:	Cow: 93%, Dog: 93%, Goat: 90%, Guinea Pig: 93%, Horse: 93%, Human: 100%, Mouse: 93%, Rabbit: 93%, Rat: 93%, Yeast: 91%, Zebrafish: 100%
Characteristics:	This is a rabbit polyclonal antibody against UBE3A. It was validated on Western Blot using a cell lysate as a positive control.
Purification:	Affinity Purified

Target Details

Target:	ube3a
---------	-------

## Target Details

---

Alternative Name: UBE3A ([ube3a Products](#))

---

Background: UBE3A is an E3 ubiquitin-protein ligase, part of the ubiquitin protein degradation system. This imprinted gene is maternally expressed in brain and biallelically expressed in other tissues. Maternally inherited deletion of this gene causes Angelman Syndrome, characterized by severe motor and intellectual retardation, ataxia, hypotonia, epilepsy, absence of speech, and characteristic facies. The protein also interacts with the E6 protein of human papillomavirus types 16 and 18, resulting in ubiquitination and proteolysis of tumor protein p53. Western blots using two different antibodies against two unique regions of this protein target confirm the same apparent molecular weight in our tests. This gene encodes an E3 ubiquitin-protein ligase, part of the ubiquitin protein degradation system. This imprinted gene is maternally expressed in brain and biallelically expressed in other tissues. Maternally inherited deletion of this gene causes Angelman Syndrome, characterized by severe motor and intellectual retardation, ataxia, hypotonia, epilepsy, absence of speech, and characteristic facies. The protein also interacts with the E6 protein of human papillomavirus types 16 and 18, resulting in ubiquitination and proteolysis of tumor protein p53. Alternative splicing of this gene results in three transcript variants encoding three isoforms with different N-termini. Additional transcript variants have been described, but their full length nature has not been determined.

Alias Symbols: ANCR, AS, E6-AP, EPVE6AP, FLJ26981, HPVE6A

Protein Interaction Partner: KLHL38, UBE2D1, UBB, TP53, TAT, AFG3L1P, ATG9A, ASAP3, AHSP, UBE3A, UBC, MEOX2, MAGEA8, JADE1, YOD1, UBE2L3, UBE2D3, PSMD14, SHFM1, ARNTL, LPP, HSF1, DR1, BTF3L4, LRSAM1, P3H1, NPLOC4, IPO11, DBNL, LSM1, ARPC1B, METTL1, SACS, ARC, RAD23A, PTPN3, CEBPA, SC

Protein Size: 875

---

Molecular Weight: 101 kDa

---

Gene ID: 7337

---

NCBI Accession: [NM\\_000462](#), [NP\\_000453](#)

---

UniProt: [Q05086](#)

---

Pathways: [Intracellular Steroid Hormone Receptor Signaling Pathway](#)

---

## Application Details

---

Application Notes: Optimal working dilutions should be determined experimentally by the investigator.

---

Comment: Antigen size: 875 AA

---

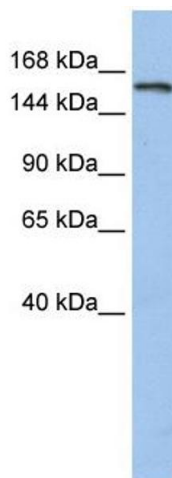
Restrictions: For Research Use only

---

## Handling

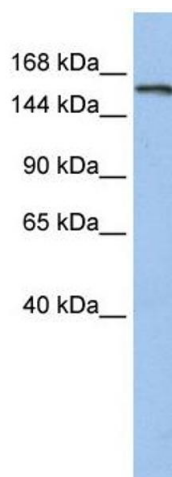
Format:	Liquid
Concentration:	Lot specific
Buffer:	Liquid. Purified antibody supplied in 1x PBS buffer with 0.09 % (w/v) sodium azide and 2 % sucrose.
Preservative:	Sodium azide
Precaution of Use:	This product contains Sodium azide: a POISONOUS AND HAZARDOUS SUBSTANCE which should be handled by trained staff only.
Handling Advice:	Avoid repeated freeze-thaw cycles.
Storage:	-20 °C
Storage Comment:	For short term use, store at 2-8°C up to 1 week. For long term storage, store at -20°C in small aliquots to prevent freeze-thaw cycles.

## Images



### Western Blotting

**Image 1.** WB Suggested Anti-UBE3A Antibody Titration: 0.2-1 µg/ml ELISA Titer: 1:312500 Positive Control: HeLa cell lysate UBE3A is strongly supported by BioGPS gene expression data to be expressed in Human HeLa cells



### Western Blotting

**Image 2.** WB Suggested Anti-UBE3A Antibody Titration: 0.2-1 µg/mL ELISA Titer: 1:12500 Positive Control: HeLa cell lysate UBE3A is strongly supported by BioGPS gene expression data to be expressed in Human HeLa cells