

Datasheet for ABIN2775666
anti-RFFL antibody (Middle Region)[Go to Product page](#)[1 Image](#)[1 Publication](#)

Overview

Quantity:	100 µL
Target:	RFFL
Binding Specificity:	Middle Region
Reactivity:	Human, Mouse, Rat, Cow, Dog, Horse, Rabbit, Guinea Pig
Host:	Rabbit
Clonality:	Polyclonal
Conjugate:	This RFFL antibody is un-conjugated
Application:	Western Blotting (WB)

Product Details

Immunogen:	The immunogen is a synthetic peptide directed towards the middle region of human RFFL
Sequence:	KDQKGLQHLV SGAEDQNGGA VPSGLEENLC KICMDSPIDC VLLECGHMT
Predicted Reactivity:	Cow: 93%, Dog: 93%, Guinea Pig: 93%, Horse: 100%, Human: 100%, Mouse: 100%, Rabbit: 100%, Rat: 100%
Characteristics:	This is a rabbit polyclonal antibody against RFFL. It was validated on Western Blot using a cell lysate as a positive control.
Purification:	Affinity Purified

Target Details

Target:	RFFL
---------	------

Target Details

Alternative Name:	RFFL (RFFL Products)
Background:	<p>RFFL has E3 ubiquitin protein ligase activity.RFFL regulates the levels of CASP8 and CASP10 by targeting them for proteasomal degradation. Has anti-apoptotic activity.RFFL may bind phosphatidylinositol phosphates.</p> <p>Alias Symbols: RNF189, RNF34L, CARP2, FRING, CARP-2, RIFIFYLIN</p> <p>Protein Interaction Partner: RIPK1, UBE2D1, UBC, UBE2D2, RFFL, ATXN3L, OTUB2, USP28, OTUB1, UCHL5, ESPL1, USP5, STAM, USP7, UBE2D3, ATXN3, TP53, MDM2, UBE2G2,</p> <p>Protein Size: 363</p>
Molecular Weight:	40 kDa
Gene ID:	117584
NCBI Accession:	NM_001017368 , NP_001017368
UniProt:	Q8WZ73

Application Details

Application Notes:	Optimal working dilutions should be determined experimentally by the investigator.
Comment:	Antigen size: 363 AA
Restrictions:	For Research Use only

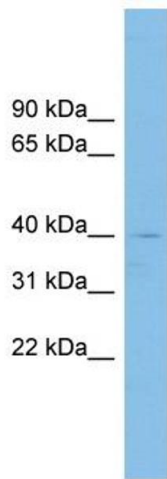
Handling

Format:	Liquid
Concentration:	Lot specific
Buffer:	Liquid. Purified antibody supplied in 1x PBS buffer with 0.09 % (w/v) sodium azide and 2 % sucrose.
Preservative:	Sodium azide
Precaution of Use:	This product contains Sodium azide: a POISONOUS AND HAZARDOUS SUBSTANCE which should be handled by trained staff only.
Handling Advice:	Avoid repeated freeze-thaw cycles.
Storage:	-20 °C
Storage Comment:	For short term use, store at 2-8°C up to 1 week. For long term storage, store at -20°C in small aliquots to prevent freeze-thaw cycles.

Publications

Product cited in: Ramsey, Clarke, Roberts, Sullivan, Johnson, Liu: "An economic evaluation of atorvastatin for primary prevention of cardiovascular events in type 2 diabetes." in: **Pharmacoeconomics**, Vol. 26, Issue 4, pp. 329-39, (2008) ([PubMed](#)).

Validation report #104256 for Western Blotting (WB)



Western Blotting

Image 1. WB Suggested Anti-RFFL Antibody Titration: 0.2-1 ug/ml ELISA Titer: 1:312500 Positive Control: THP-1 cell lysate