

Datasheet for ABIN2775671
anti-UBE2D1 antibody (Middle Region)[Go to Product page](#)

3 Images

Overview

Quantity:	100 µL
Target:	UBE2D1
Binding Specificity:	Middle Region
Reactivity:	Human, Mouse, Rat, Dog, Horse, Pig, Cow, Goat, Zebrafish (Danio rerio), Guinea Pig, Rabbit
Host:	Rabbit
Clonality:	Polyclonal
Conjugate:	This UBE2D1 antibody is un-conjugated
Application:	Western Blotting (WB)

Product Details

Immunogen:	The immunogen is a synthetic peptide directed towards the middle region of human UBE2D1
Sequence:	SQWSPALTVS KVLLSICSL CDPNPDDPLV PDIAQIYKSD KEKYNRHARE
Predicted Reactivity:	Cow: 100%, Dog: 100%, Goat: 100%, Guinea Pig: 79%, Horse: 100%, Human: 100%, Mouse: 100%, Pig: 100%, Rabbit: 93%, Rat: 100%, Zebrafish: 93%
Characteristics:	This is a rabbit polyclonal antibody against UBE2D1. It was validated on Western Blot using a cell lysate as a positive control.
Purification:	Protein A purified

Target Details

Target:	UBE2D1
---------	--------

Target Details

Alternative Name:	UBE2D1 (UBE2D1 Products)
Background:	<p>The modification of proteins with ubiquitin is an important cellular mechanism for targeting abnormal or short-lived proteins for degradation. Ubiquitination involves at least three classes of enzymes: ubiquitin-activating enzymes, or E1s, ubiquitin-conjugating enzymes, or E2s, and ubiquitin-protein ligases, or E3s. UBE2D1 is a member of the E2 ubiquitin-conjugating enzyme family. This enzyme is closely related to a stimulator of iron transport (SFT), and is up-regulated in hereditary hemochromatosis. It also functions in the ubiquitination of the tumor-suppressor protein p53 and the hypoxia-inducible transcription factor HIF1alpha by interacting with the E1 ubiquitin-activating enzyme and the E3 ubiquitin-protein ligases.</p> <p>Alias Symbols: E2(17)KB1, SFT, UBC4/5, UBCH5, UBCH5A</p> <p>Protein Interaction Partner: RBX1, STUB1, RNF7, RNF14, MID1, MDM2, EP300, CREBBP, ANAPC11, DTL, RNF115, MKRN2, NEDD4L, FAF2, TRIM32, MID2, RNF111, RNF5, RSP5, GPB1, NHLRC1, RFFL, UHRF2, DTX2, ZNRF1, TRIM63, RNF146, FBXO31, RNF26, TRIM39, RNF126, FBXW7, NEDD4, CUL1, CUL3, MKRN3, UBE3A</p> <p>Protein Size: 147</p>
Molecular Weight:	16 kDa
Gene ID:	7321
NCBI Accession:	NM_001204880 , NP_003329
UniProt:	P51668
Pathways:	Activation of Innate immune Response , Toll-Like Receptors Cascades

Application Details

Application Notes:	Optimal working dilutions should be determined experimentally by the investigator.
Comment:	Antigen size: 147 AA
Restrictions:	For Research Use only

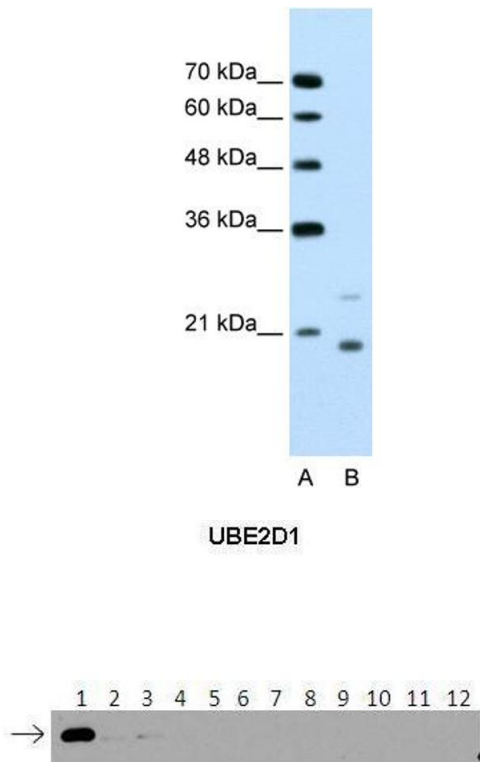
Handling

Format:	Liquid
Concentration:	Lot specific
Buffer:	Liquid. Purified antibody supplied in 1x PBS buffer with 0.09 % (w/v) sodium azide and 2 % sucrose.

Handling

Preservative:	Sodium azide
Precaution of Use:	This product contains Sodium azide: a POISONOUS AND HAZARDOUS SUBSTANCE which should be handled by trained staff only.
Handling Advice:	Avoid repeated freeze-thaw cycles.
Storage:	-20 °C
Storage Comment:	For short term use, store at 2-8°C up to 1 week. For long term storage, store at -20°C in small aliquots to prevent freeze-thaw cycles.

Validation report #104256 for Western Blotting (WB)



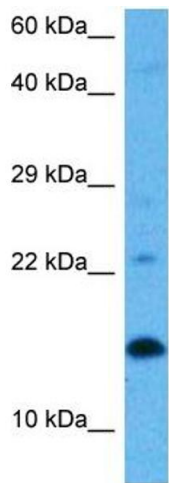
See Immunoblot 2 Data and customer Feedback for more Information

Western Blotting

Image 1. WB Suggested Anti-UBE2D1 Antibody Titration:
1.25ug/ml Positive Control: Jurkat cell lysate

Western Blotting

Image 2. Lanes: 1: 40ng HIS-UBE2D1 protein 2: 40ng HIS-UBE2D2 protein 3: 40ng HIS-UBE2D3 protein 4: 40ng HIS-UBE2D4 protein 5: 40ng HIS-UBE2E1 protein 6: 40ng HIS-UBE2E2 protein 7: 40ng HIS-UBE2E3 protein 8: 40ng HIS-UBE2K protein 9: 40ng HIS-UBE2L3 protein 10: 40ng HIS-UBE2N protein 11: 40ng HIS-UBE2V1 protein 12: 40ng HIS-UBE2V2 protein. Primary Antibody Dilution: 1:500 Secondary Antibody Dilution: 1:50,000 Gene Name: UBE2D1 Submitted by: Dr Chris Boutell. MRC-UoG Centre for Virus Research (CVR), UK.



Western Blotting

Image 3. Host: Rat Target Name: UBE2D1 Sample Tissue:
Rat Skeletal Muscle Antibody Dilution: 1ug/ml