

Datasheet for ABIN2775674
anti-UBE2D3 antibody (N-Term)[Go to Product page](#)

7 Images

Overview

Quantity:	100 µL
Target:	UBE2D3
Binding Specificity:	N-Term
Reactivity:	Human, Mouse, Rat, Cow, Dog, Guinea Pig, Horse, Rabbit, Saccharomyces cerevisiae, Zebrafish (Danio rerio)
Host:	Rabbit
Clonality:	Polyclonal
Conjugate:	This UBE2D3 antibody is un-conjugated
Application:	Western Blotting (WB)

Product Details

Immunogen:	The immunogen is a synthetic peptide directed towards the N terminal region of human UBE2D3
Sequence:	MALKRINKEL SDLARDPPAQ CSAGPVGDDM FHWQATIMGP NDSPYQGGVF
Predicted Reactivity:	Cow: 100%, Dog: 100%, Guinea Pig: 100%, Horse: 100%, Human: 100%, Mouse: 100%, Rabbit: 92%, Rat: 100%, Yeast: 92%, Zebrafish: 92%
Characteristics:	This is a rabbit polyclonal antibody against UBE2D3. It was validated on Western Blot using a cell lysate as a positive control.
Purification:	Affinity Purified

Target Details

Target:	UBE2D3
Alternative Name:	UBE2D3 (UBE2D3 Products)
Background:	<p>The modification of proteins with ubiquitin is an important cellular mechanism for targeting abnormal or short-lived proteins for degradation. Ubiquitination involves at least three classes of enzymes: ubiquitin-activating enzymes, or E1s, ubiquitin-conjugating enzymes, or E2s, and ubiquitin-protein ligases, or E3s. UBE2D3 is a member of the E2 ubiquitin-conjugating enzyme family. This enzyme functions in the ubiquitination of the tumor-suppressor protein p53, which is induced by an E3 ubiquitin-protein ligase. The modification of proteins with ubiquitin is an important cellular mechanism for targeting abnormal or short-lived proteins for degradation. Ubiquitination involves at least three classes of enzymes: ubiquitin-activating enzymes, or E1s, ubiquitin-conjugating enzymes, or E2s, and ubiquitin-protein ligases, or E3s. This gene encodes a member of the E2 ubiquitin-conjugating enzyme family. This enzyme functions in the ubiquitination of the tumor-suppressor protein p53, which is induced by an E3 ubiquitin-protein ligase. Multiple spliced transcript variants have been found for this gene, but the full-length nature of some variants has not been determined.</p> <p>Alias Symbols: E2(17)KB3, MGC43926, MGC5416, UBC4/5, UBCH5C</p> <p>Protein Interaction Partner: NHLRC1, DTX2, TRIM63, RNF146, RNF26, RBX1, UBC, RNF5, RNF2, NEDD4, MID1, STUB1, TRIM39, OTUB1, MDM2, RNF111, TRIM33, PRPF19, RNF115, TRIM58, BTRC, MARCH7, NFKBIA, ARIH1, FBXW11, UBE2D3, PARK2, BRCA1, BARD1, UBE3A, MSL1, UBA1, CBLC, SMURF1, RNF130, UBA6, M</p> <p>Protein Size: 147</p>
Molecular Weight:	17 kDa
Gene ID:	7323
NCBI Accession:	NM_003340 , NP_003331
UniProt:	P61077
Pathways:	Activation of Innate immune Response , Toll-Like Receptors Cascades

Application Details

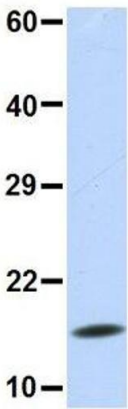
Application Notes:	Optimal working dilutions should be determined experimentally by the investigator.
Comment:	Antigen size: 147 AA
Restrictions:	For Research Use only

Handling

Format:	Liquid
Concentration:	Lot specific
Buffer:	Liquid. Purified antibody supplied in 1x PBS buffer with 0.09 % (w/v) sodium azide and 2 % sucrose.
Preservative:	Sodium azide
Precaution of Use:	This product contains Sodium azide: a POISONOUS AND HAZARDOUS SUBSTANCE which should be handled by trained staff only.
Handling Advice:	Avoid repeated freeze-thaw cycles.
Storage:	-20 °C
Storage Comment:	For short term use, store at 2-8°C up to 1 week. For long term storage, store at -20°C in small aliquots to prevent freeze-thaw cycles.

Images

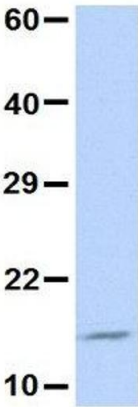
UBE2D3



Western Blotting

Image 1. Host: Rabbit Target Name: UBE2D3 Sample Type: MCF7 Antibody Dilution: 1.0ug/ml UBE2D3 is strongly supported by BioGPS gene expression data to be expressed in MCF7

UBE2D3



Western Blotting

Image 2. Host: Rabbit Target Name: UBE2D3 Sample Type: Jurkat Antibody Dilution: 1.0ug/ml UBE2D3 is strongly supported by BioGPS gene expression data to be expressed in Jurkat



Western Blotting

Image 3. WB Suggested Anti-UBE2D3 Antibody Titration: 0.2-1 ug/ml ELISA Titer: 1:1562500 Positive Control: MCF7 cell lysate. UBE2D3 is strongly supported by BioGPS gene expression data to be expressed in MCF7

Please check the [product details page](#) for more images. Overall 7 images are available for ABIN2775674.