

Datasheet for ABIN2775676
anti-UBE2E1 antibody (Middle Region)[Go to Product page](#)

1 Image

Overview

Quantity:	100 µL
Target:	UBE2E1
Binding Specificity:	Middle Region
Reactivity:	Human, Mouse, Rabbit, Dog, Guinea Pig, Rat, Horse, Cow, Zebrafish (Danio rerio)
Host:	Rabbit
Clonality:	Polyclonal
Conjugate:	This UBE2E1 antibody is un-conjugated
Application:	Western Blotting (WB)

Product Details

Immunogen:	The immunogen is a synthetic peptide directed towards the middle region of human UBE2E1
Sequence:	PKGDNIYEWK STILGPPGSV YEGGVFFLDI TFTPEYFPKP PKVTFRTIRY
Predicted Reactivity:	Cow: 93%, Dog: 100%, Guinea Pig: 100%, Horse: 100%, Human: 100%, Mouse: 100%, Rabbit: 100%, Rat: 100%, Zebrafish: 93%
Characteristics:	This is a rabbit polyclonal antibody against UBE2E1. It was validated on Western Blot using a cell lysate as a positive control.
Purification:	Affinity Purified

Target Details

Target:	UBE2E1
---------	--------

Target Details

Alternative Name:	UBE2E1 (UBE2E1 Products)
Background:	<p>UBE2E1 catalyzes the covalent attachment of ubiquitin to other proteins. UBE2E1 mediates the selective degradation of short-lived and abnormal proteins. The modification of proteins with ubiquitin is an important cellular mechanism for targeting abnormal or short-lived proteins for degradation. Ubiquitination involves at least three classes of enzymes: ubiquitin-activating enzymes, or E1s, ubiquitin-conjugating enzymes, or E2s, and ubiquitin-protein ligases, or E3s. This gene encodes a member of the E2 ubiquitin-conjugating enzyme family. Two alternatively spliced transcript variants encoding distinct isoforms have been found for this gene.</p> <p>Alias Symbols: UBCH6</p> <p>Protein Interaction Partner: TRIM33, RNF11, TRIM32, UBC, TRAF6, MID1, TRIM23, XIAP, NHLRC1, ZNRF1, JADE1, RNF26, SLX8, SLX5, MARCH7, UBE2E1, MARCH5, RNF167, UBA1, RNF130, USP7, NEDD4, Rag1, ZNF827, PARK2, BRCA1, RNF122, RNF128, ITCH, TRIM39, RNF20, FBXO2, WWP2, STUB1, TOPORS, TRIM28,</p> <p>Protein Size: 193</p>
Molecular Weight:	21 kDa
Gene ID:	7324
NCBI Accession:	NM_003341 , NP_003332
UniProt:	P51965
Pathways:	Ubiquitin Proteasome Pathway

Application Details

Application Notes:	Optimal working dilutions should be determined experimentally by the investigator.
Comment:	Antigen size: 193 AA
Restrictions:	For Research Use only

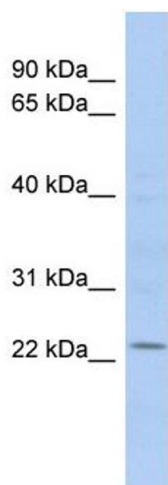
Handling

Format:	Liquid
Concentration:	Lot specific
Buffer:	Liquid. Purified antibody supplied in 1x PBS buffer with 0.09 % (w/v) sodium azide and 2 % sucrose.
Preservative:	Sodium azide

Handling

Precaution of Use:	This product contains Sodium azide: a POISONOUS AND HAZARDOUS SUBSTANCE which should be handled by trained staff only.
Handling Advice:	Avoid repeated freeze-thaw cycles.
Storage:	-20 °C
Storage Comment:	For short term use, store at 2-8°C up to 1 week. For long term storage, store at -20°C in small aliquots to prevent freeze-thaw cycles.

Images



Western Blotting

Image 1. WB Suggested Anti-UBE2E1 Antibody Titration: 0.2-1 ug/ml ELISA Titer: 1:312500 Positive Control: COLO205 cell lysate