

Datasheet for ABIN2775684  
**anti-UBE2L3 antibody (C-Term)**

3 Images

1 Publication

[Go to Product page](#)

## Overview

Quantity:	100 µL
Target:	UBE2L3
Binding Specificity:	C-Term
Reactivity:	Human, Mouse, Rat, Cow, Dog, Horse, Rabbit, Guinea Pig, Zebrafish (Danio rerio)
Host:	Rabbit
Clonality:	Polyclonal
Conjugate:	This UBE2L3 antibody is un-conjugated
Application:	Western Blotting (WB), Immunohistochemistry (IHC)

## Product Details

Immunogen:	The immunogen is a synthetic peptide directed towards the C terminal region of human UBE2L3
Sequence:	IQSLIALVND PQPEHPLRAD LAEEYSKDRK KFCKNAEEFT KKYGEKRPVD
Predicted Reactivity:	Cow: 100%, Dog: 100%, Guinea Pig: 100%, Horse: 100%, Human: 100%, Mouse: 100%, Rabbit: 100%, Rat: 100%, Zebrafish: 93%
Characteristics:	This is a rabbit polyclonal antibody against UBE2L3. It was validated on Western Blot using a cell lysate as a positive control.
Purification:	Affinity Purified

## Target Details

Target:	UBE2L3
---------	--------

## Target Details

Alternative Name:	UBE2L3 ( <a href="#">UBE2L3 Products</a> )
Background:	<p>UBE2L3(ubiquitin-conjugating enzyme E2L 3) Antibody The modification of proteins with ubiquitin is an important cellular mechanism for targeting abnormal or short-lived proteins for degradation. Ubiquitination involves at least three classes of enzymes: ubiquitin-activating enzymes (E1s), ubiquitin-conjugating enzymes (E2s) and ubiquitin-protein ligases (E3s). This gene encodes a member of the E2 ubiquitin-conjugating enzyme family. This enzyme is demonstrated to participate in the ubiquitination of p53, c-Fos, and the NF-kB precursor p105 in vitro. Two alternatively spliced transcript variants encoding distinct isoforms have been found for this gene.</p> <p>Alias Symbols: E2-F1, L-UBC, UBCH7, UbcM4</p> <p>Protein Interaction Partner: UBC, TRAF6, NEDD4, ITCH, MUL1, SMURF2, SMURF1, WWP2, WWP1, ARIH2, RNF144A, UBA1, PARK2, RNF144B, HACE1, ARIH1, UBE3A, UBE2L3, UBA6, UBR5, CACNA1B, MAP1LC3B, BAG3, HSPA4, AICDA, CCNB1IP1, FN1, RBX1, LIG4, ZPR1, USP9X, SF1, VDACC2, UCHL3, UBE2V2, UBE2D2, UBE</p> <p>Protein Size: 154</p>
Molecular Weight:	17 kDa
Gene ID:	7332
NCBI Accession:	<a href="#">NM_003347</a> , <a href="#">NP_003338</a>
UniProt:	<a href="#">P68036</a>

## Application Details

Application Notes:	Optimal working dilutions should be determined experimentally by the investigator.
Comment:	Antigen size: 154 AA
Restrictions:	For Research Use only

## Handling

Format:	Liquid
Concentration:	Lot specific
Buffer:	Liquid. Purified antibody supplied in 1x PBS buffer with 0.09 % (w/v) sodium azide and 2 % sucrose.
Preservative:	Sodium azide

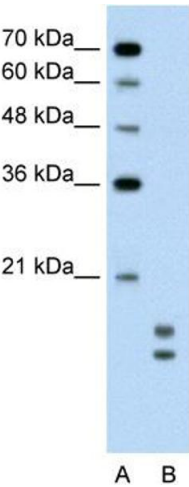
## Handling

Precaution of Use:	This product contains Sodium azide: a POISONOUS AND HAZARDOUS SUBSTANCE which should be handled by trained staff only.
Handling Advice:	Avoid repeated freeze-thaw cycles.
Storage:	-20 °C
Storage Comment:	For short term use, store at 2-8°C up to 1 week. For long term storage, store at -20°C in small aliquots to prevent freeze-thaw cycles.

## Publications

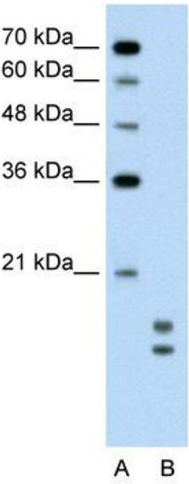
Product cited in:	Ramsey, Clarke, Roberts, Sullivan, Johnson, Liu: "An economic evaluation of atorvastatin for primary prevention of cardiovascular events in type 2 diabetes." in: <b>Pharmacoeconomics</b> , Vol. 26, Issue 4, pp. 329-39, (2008) ( <a href="#">PubMed</a> ).
-------------------	---

## Validation report #104256 for Western Blotting (WB)



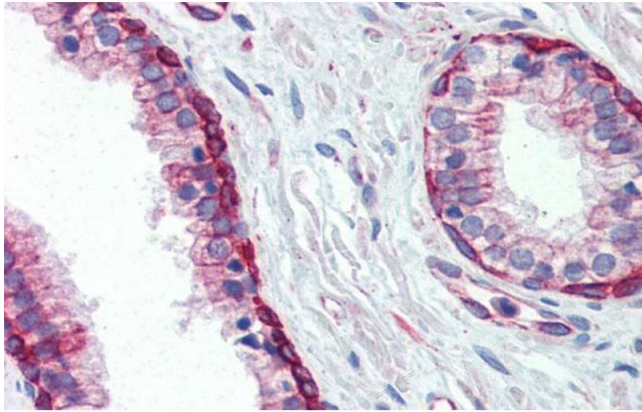
### Western Blotting

**Image 1.** WB Suggested Anti-UBE2L3 Antibody Titration: 0.2-1 ug/ml Positive Control: Jurkat cell lysate There is BioGPS gene expression data showing that UBE2L3 is expressed in Jurkat



### Western Blotting

**Image 2.** WB Suggested Anti-UBE2L3 Antibody Titration: 0.2-1 µg/mL Positive Control: Jurkat cell lysate There is BioGPS gene expression data showing that UBE2L3 is expressed in Jurkat



### Immunohistochemistry

**Image 3.** Immunohistochemistry with Human Prostate lysate tissue at an antibody concentration of 5.0ug/ml using anti-UBE2L3 antibody