



[Go to Product page](#)

Datasheet for ABIN2775685  
**anti-FKBP6 antibody (Middle Region)**

2 Images

Overview

Quantity:	100 µL
Target:	FKBP6
Binding Specificity:	Middle Region
Reactivity:	Human, Rat, Mouse, Dog, Cow, Guinea Pig, Horse, Pig, Rabbit
Host:	Rabbit
Clonality:	Polyclonal
Conjugate:	This FKBP6 antibody is un-conjugated
Application:	Western Blotting (WB), Immunohistochemistry (IHC)

Product Details

Immunogen:	The immunogen is a synthetic peptide directed towards the middle region of human FKBP6
Sequence:	FCALSAEQQD QFPLQKVLKV AATEREFGNY LFRQNRFYDA KVRYSRALLL
Predicted Reactivity:	Cow: 100%, Dog: 100%, Guinea Pig: 77%, Horse: 100%, Human: 100%, Mouse: 100%, Pig: 100%, Rabbit: 100%, Rat: 100%
Characteristics:	This is a rabbit polyclonal antibody against FKBP6. It was validated on Western Blot and immunohistochemistry.
Purification:	Protein A purified

Target Details

Target:	FKBP6
---------	-------

## Target Details

---

Alternative Name:	FKBP6 ( <a href="#">FKBP6 Products</a> )
Background:	<p>FKBP6 is a member of the immunophilin protein family, which play a role in immunoregulation and basic cellular processes involving protein folding and trafficking. FKBP6 is a cis-trans prolyl isomerase that binds to the immunosuppressants FK506 and rapamycin. This gene encodes a member of the interferon regulatory transcription factor (IRF) family. Family members share a highly-conserved N-terminal helix-turn-helix DNA-binding domain and a less conserved C-terminal protein-binding domain. Mutations in this gene can cause van der Woude syndrome and popliteal pterygium syndrome. This protein is involved in palate formation.</p> <p>Alias Symbols: FKBP36, MGC87179, PPlase</p> <p>Protein Interaction Partner: LZTS2, CDK5RAP3, SUMO1P1, CCDC36, CDC37, USP19, PTGES3, VBP1, PFDN2, OSBP, HSP90AB1, HSP90AA1, TINF2, ACD, NME7, CCNK, GAPDH,</p> <p>Protein Size: 467</p>
Molecular Weight:	53 kDa
Gene ID:	8468
NCBI Accession:	<a href="#">NM_006147</a> , <a href="#">NP_003593</a>
UniProt:	<a href="#">O75344</a>
Pathways:	<a href="#">M Phase</a>

## Application Details

---

Application Notes:	Optimal working dilutions should be determined experimentally by the investigator.
Comment:	Antigen size: 467 AA
Restrictions:	For Research Use only

## Handling

---

Format:	Liquid
Concentration:	Lot specific
Buffer:	Liquid. Purified antibody supplied in 1x PBS buffer with 0.09 % (w/v) sodium azide and 2 % sucrose.
Preservative:	Sodium azide
Precaution of Use:	This product contains Sodium azide: a POISONOUS AND HAZARDOUS SUBSTANCE which should be handled by trained staff only.

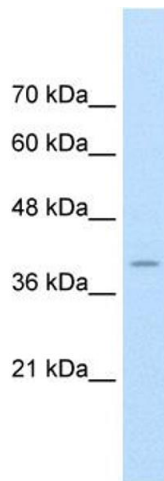
## Handling

Handling Advice: Avoid repeated freeze-thaw cycles.

Storage: -20 °C

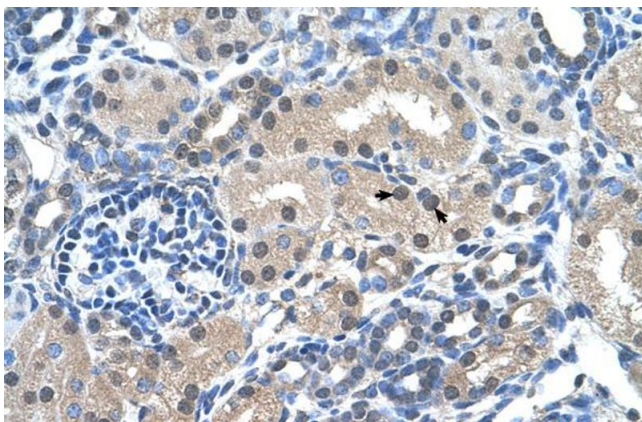
Storage Comment: For short term use, store at 2-8°C up to 1 week. For long term storage, store at -20°C in small aliquots to prevent freeze-thaw cycles.

## Images



### Western Blotting

**Image 1.** WB Suggested Anti-FKBP6 Antibody Titration:  
1.25ug/ml Positive Control: HepG2 cell lysate



### Immunohistochemistry

**Image 2.** Human kidney