

Datasheet for ABIN2775686

## anti-UBE2M antibody (N-Term)



[Go to Product page](#)

7 Images

1 Publication

### Overview

Quantity:	100 µL
Target:	UBE2M (ube2m)
Binding Specificity:	N-Term
Reactivity:	Human, Mouse, Rat, Dog, Rabbit, Cow, Guinea Pig, Horse
Host:	Rabbit
Clonality:	Polyclonal
Conjugate:	This UBE2M antibody is un-conjugated
Application:	Western Blotting (WB), Immunohistochemistry (IHC)

### Product Details

Immunogen:	The immunogen is a synthetic peptide directed towards the N terminal region of human UBE2M
Sequence:	IKLFSLKQK KEEESAGGTK GSSKKASAAQ LRIQKDINEL NLPKTCDISF
Predicted Reactivity:	Cow: 100%, Dog: 100%, Guinea Pig: 100%, Horse: 100%, Human: 100%, Mouse: 100%, Rabbit: 100%, Rat: 100%
Characteristics:	This is a rabbit polyclonal antibody against UBE2M. It was validated on Western Blot using a cell lysate as a positive control.
Purification:	Affinity Purified

### Target Details

Target:	UBE2M (ube2m)
---------	---------------

## Target Details

Alternative Name: UBE2M ([ube2m Products](#))

**Background:** The modification of proteins with ubiquitin is an important cellular mechanism for targeting abnormal or short-lived proteins for degradation. Ubiquitination involves at least three classes of enzymes: ubiquitin-activating enzymes, or E1s, ubiquitin-conjugating enzymes, or E2s, and ubiquitin-protein ligases, or E3s. UBE2M is a member of the E2 ubiquitin-conjugating enzyme family. It is linked with a ubiquitin-like protein, NEDD8, which can be conjugated to cellular proteins, such as Cdc53/culin. The modification of proteins with ubiquitin is an important cellular mechanism for targeting abnormal or short-lived proteins for degradation. Ubiquitination involves at least three classes of enzymes: ubiquitin-activating enzymes, or E1s, ubiquitin-conjugating enzymes, or E2s, and ubiquitin-protein ligases, or E3s. This gene encodes a member of the E2 ubiquitin-conjugating enzyme family. The encoded protein is linked with a ubiquitin-like protein, NEDD8, which can be conjugated to cellular proteins, such as Cdc53/culin. Alias Symbols: UBC-RS2, UBC12, hUbc12 Protein Interaction Partner: DCUN1D1, DCUN1D4, RBX1, UBC, MARCH7, UBE2M, CUL1, DCUN1D3, SMURF1, CAND1, DCUN1D2, NEDD8, DCUN1D5, LMNA, VCAM1, ITGA4, FN1, VCP, UBE2D2, TYMS, TST, VAMP2, PARK2, PINK1, UBE2T, SEC22B, SLC9A3R2, APP, CUL3, CUL4A, TP53, UBD, COPS6, UBA3, NAE1, CUL2, Nedd4, Protein Size: 183

Molecular Weight: 21 kDa

Gene ID: 9040

NCBI Accession: [NM\\_003969](#), [NP\\_003960](#)

UniProt: [P61081](#)

## Application Details

Application Notes: Optimal working dilutions should be determined experimentally by the investigator.

Comment: Antigen size: 183 AA

Restrictions: For Research Use only

## Handling

Format: Liquid

Concentration: Lot specific

Buffer: Liquid. Purified antibody supplied in 1x PBS buffer with 0.09 % (w/v) sodium azide and 2 %

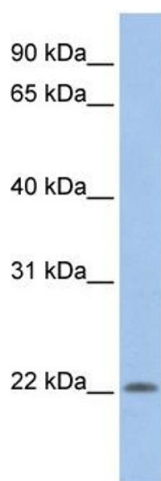
## Handling

	sucrose.
Preservative:	Sodium azide
Precaution of Use:	This product contains Sodium azide: a POISONOUS AND HAZARDOUS SUBSTANCE which should be handled by trained staff only.
Handling Advice:	Avoid repeated freeze-thaw cycles.
Storage:	-20 °C
Storage Comment:	For short term use, store at 2-8°C up to 1 week. For long term storage, store at -20°C in small aliquots to prevent freeze-thaw cycles.

## Publications

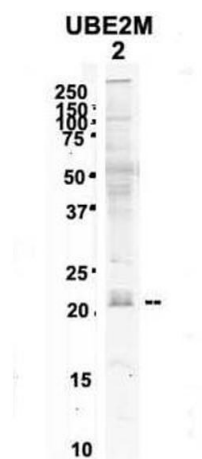
Product cited in:	Tordjman, Leroyer, Chauvet, Quette, Chauvet, Tomkiewicz, Chapron, Barouki, Forest, Aggerbeck, Antoine: "Cytosolic aspartate aminotransferase, a new partner in adipocyte glyceroneogenesis and an atypical target of thiazolidinedione." in: <b>The Journal of biological chemistry</b> , Vol. 282, Issue 32, pp. 23591-602, (2007) ( <a href="#">PubMed</a> ).
-------------------	---

## Images



### Western Blotting

**Image 1.** WB Suggested Anti-UBE2M Antibody Titration: 0.2-1 ug/ml Positive Control: 721\_B cell lysate UBE2M is supported by BioGPS gene expression data to be expressed in 721\_B



See Immunoblot 2 Data for more information.

### Western Blotting

**Image 2. Sample Type:** 2. mouse brain extracts (80ug)

**Primary Antibody Dilution:** 2ug/ml

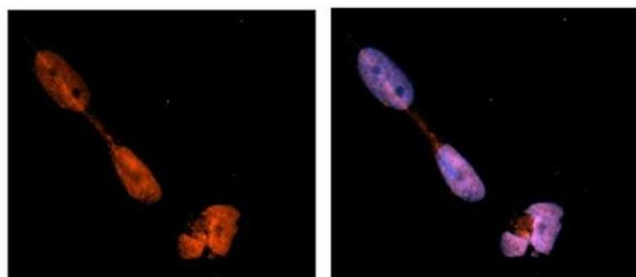
**Secondary Antibody:** IRDye 800CW goat anti-rabbit from Li-COR Bioscience

**Secondary Antibody Dilution:** 1: 20,000

**Image Submitted by:** Yuzhi Chen

University of Arkansas for Medical Science

### UBE2M



See Immunohistochemistry 1 Data and Customer Feedback tab for more information.

### Immunohistochemistry

**Image 3. Sample Type:** NT2 cells

**Red:** Antibody

**Blue:** DAPI

**Primary Dilution:** 1ug/50ul antibody

**Secondary Antibody:** Alexa goat anti-rabbit 594

**Image Submitted by:** Yuzhi Chen, University of Arkansas for Medical Sciences

Please check the [product details page](#) for more images. Overall 7 images are available for ABIN2775686.