

Datasheet for ABIN2775687
anti-UBE2L6 antibody (N-Term)



[Go to Product page](#)

1 Image

1 Publication

Overview

Quantity:	100 µL
Target:	UBE2L6
Binding Specificity:	N-Term
Reactivity:	Human, Rat, Mouse, Pig, Rabbit, Cow, Dog, Guinea Pig, Horse, Zebrafish (Danio rerio)
Host:	Rabbit
Clonality:	Polyclonal
Conjugate:	This UBE2L6 antibody is un-conjugated
Application:	Western Blotting (WB)

Product Details

Immunogen:	The immunogen is a synthetic peptide directed towards the N terminal region of human UBE2L6
Sequence:	LLLPDQPPYH LKAFNLRISF PPEYPFKPPM IKFTTKIYHP NVDENGQICL
Predicted Reactivity:	Cow: 85%, Dog: 85%, Guinea Pig: 85%, Horse: 86%, Human: 100%, Mouse: 85%, Pig: 92%, Rabbit: 100%, Rat: 85%, Zebrafish: 85%
Characteristics:	This is a rabbit polyclonal antibody against UBE2L6. It was validated on Western Blot using a cell lysate as a positive control.
Purification:	Affinity Purified

Target Details

Target:	UBE2L6
---------	--------

Target Details

Alternative Name: [UBE2L6 \(UBE2L6 Products\)](#)

Background: The modification of proteins with ubiquitin is an important cellular mechanism for targeting abnormal or short-lived proteins for degradation. Ubiquitination involves at least three classes of enzymes: ubiquitin-activating enzymes (E1s), ubiquitin-conjugating enzymes (E2s) and ubiquitin-protein ligases (E3s). UBE2L6 is a member of the E2 ubiquitin-conjugating enzyme family. This enzyme is highly similar in primary structure to the enzyme encoded by UBE2L3 gene. The modification of proteins with ubiquitin is an important cellular mechanism for targeting abnormal or short-lived proteins for degradation. Ubiquitination involves at least three classes of enzymes: ubiquitin-activating enzymes (E1s), ubiquitin-conjugating enzymes (E2s) and ubiquitin-protein ligases (E3s). This gene encodes a member of the E2 ubiquitin-conjugating enzyme family. This enzyme is highly similar in primary structure to the enzyme encoded by UBE2L3 gene. Two alternatively spliced transcript variants encoding distinct isoforms have been found for this gene.

Alias Symbols: MGC40331, RIG-B, UBCH8

Protein Interaction Partner: LONRF1, FBXO31, RBCK1, ARIH2, RBX1, CUL1, SKP1, UBE2L6, UBC, SIAH2, PARK2, RNF144A, UBE3A, RAD23A, ARIH1, SPEN, ISG15, TIMM8A, RAD21, FLT3, ARHGDI1, park, SIAH1, RUNX1, RNF144B, DTX3, RNF19B, TRAF7, TRIM8, RNF122, MUL1, RNF25, RNF150, RNF125, CBL, TOPORS

Protein Size: 153

Molecular Weight: 18 kDa

Gene ID: 9246

NCBI Accession: [NM_004223](#), [NP_004214](#)

UniProt: [Q8N5D8](#)

Application Details

Application Notes: Optimal working dilutions should be determined experimentally by the investigator.

Comment: Antigen size: 153 AA

Restrictions: For Research Use only

Handling

Format: Liquid

Concentration: Lot specific

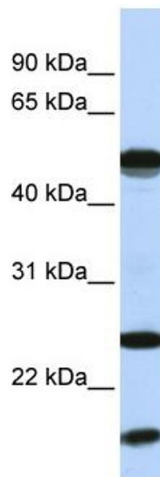
Handling

Buffer:	Liquid. Purified antibody supplied in 1x PBS buffer with 0.09 % (w/v) sodium azide and 2 % sucrose.
Preservative:	Sodium azide
Precaution of Use:	This product contains Sodium azide: a POISONOUS AND HAZARDOUS SUBSTANCE which should be handled by trained staff only.
Handling Advice:	Avoid repeated freeze-thaw cycles.
Storage:	-20 °C
Storage Comment:	For short term use, store at 2-8°C up to 1 week. For long term storage, store at -20°C in small aliquots to prevent freeze-thaw cycles.

Publications

Product cited in: Mullins, Crawford, Khuder, Hernandez, Yoon, Willey: "CEBPG transcription factor correlates with antioxidant and DNA repair genes in normal bronchial epithelial cells but not in individuals with bronchogenic carcinoma." in: **BMC cancer**, Vol. 5, pp. 141, (2005) ([PubMed](#)).

Images



Western Blotting

Image 1. WB Suggested Anti-UBE2L6 Antibody Titration: 0.2-1 ug/ml ELISA Titer: 1:1562500 Positive Control: MCF7 cell lysate