

Datasheet for ABIN2775692  
**anti-UBE4A antibody (Middle Region)**[Go to Product page](#)

## 2 Images

## Overview

Quantity:	100 µL
Target:	UBE4A
Binding Specificity:	Middle Region
Reactivity:	Human, Mouse, Rat, Dog, Guinea Pig, Horse, Zebrafish (Danio rerio), Cow, Rabbit
Host:	Rabbit
Clonality:	Polyclonal
Conjugate:	This UBE4A antibody is un-conjugated
Application:	Western Blotting (WB)

## Product Details

Immunogen:	The immunogen is a synthetic peptide directed towards the middle region of human UBE4A
Sequence:	QYAPQLAEAL IKVFVDIEFT GDPHQFEQKF NYRRPMYPIL RYMWGTDTYR
Predicted Reactivity:	Cow: 100%, Dog: 100%, Guinea Pig: 100%, Horse: 100%, Human: 100%, Mouse: 100%, Rabbit: 100%, Rat: 100%, Zebrafish: 100%
Characteristics:	This is a rabbit polyclonal antibody against UBE4A. It was validated on Western Blot using a cell lysate as a positive control.
Purification:	Affinity Purified

## Target Details

Target:	UBE4A
---------	-------

## Target Details

Alternative Name:	UBE4A ( <a href="#">UBE4A Products</a> )
Background:	<p>The modification of proteins with ubiquitin is an important cellular mechanism for targeting abnormal or short-lived proteins for degradation. Ubiquitination involves at least three classes of enzymes: ubiquitin-activating enzymes, or E1s, ubiquitin-conjugating enzymes, or E2s, and ubiquitin-protein ligases, or E3s. UBE4A is an additional conjugation factor, E4, which is involved in multiubiquitin chain assembly. The modification of proteins with ubiquitin is an important cellular mechanism for targeting abnormal or short-lived proteins for degradation.</p> <p>Ubiquitination involves at least three classes of enzymes: ubiquitin-activating enzymes, or E1s, ubiquitin-conjugating enzymes, or E2s, and ubiquitin-protein ligases, or E3s. This gene encodes an additional conjugation factor, E4, which is involved in multiubiquitin chain assembly.</p> <p>Alias Symbols: E4, KIAA0126, MGC133315, UBOX2, UFD2</p> <p>Protein Interaction Partner: UBC, SLA, EPHA2, CBX7, UBE2D3, ELAVL1, MAVS, PTTG1, GZMB, CASP6, UBE2D4, UBE2D2, UBE2D1, VCP, PTP4A3,</p> <p>Protein Size: 1073</p>
Molecular Weight:	123 kDa
Gene ID:	9354
NCBI Accession:	<a href="#">NM_004788</a> , <a href="#">NP_004779</a>
UniProt:	<a href="#">B0YJB6</a>

## Application Details

Application Notes:	Optimal working dilutions should be determined experimentally by the investigator.
Comment:	Antigen size: 1073 AA
Restrictions:	For Research Use only

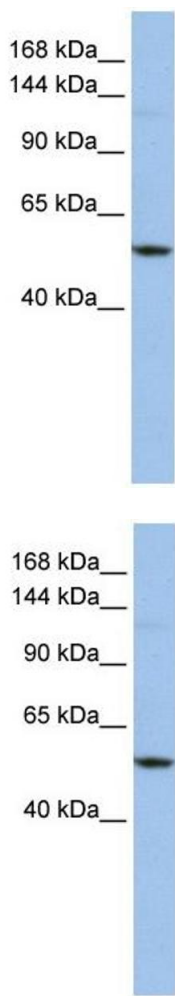
## Handling

Format:	Liquid
Concentration:	Lot specific
Buffer:	Liquid. Purified antibody supplied in 1x PBS buffer with 0.09 % (w/v) sodium azide and 2 % sucrose.
Preservative:	Sodium azide
Precaution of Use:	This product contains Sodium azide: a POISONOUS AND HAZARDOUS SUBSTANCE which

Handling

	should be handled by trained staff only.
Handling Advice:	Avoid repeated freeze-thaw cycles.
Storage:	-20 °C
Storage Comment:	For short term use, store at 2-8°C up to 1 week. For long term storage, store at -20°C in small aliquots to prevent freeze-thaw cycles.

Images



**Western Blotting**

**Image 1.** WB Suggested Anti-UBE4A Antibody Titration: 0.2-1 ug/ml ELISA Titer: 1:312500 Positive Control: 721\_B cell lysate UBE4A is supported by BioGPS gene expression data to be expressed in 721\_B

**Western Blotting**

**Image 2.** WB Suggested Anti-UBE4A Antibody Titration: 0.2-1 µg/mL ELISA Titer: 1:12500 Positive Control: 21\_B cell lysate UBE4A is supported by BioGPS gene expression data to be expressed in 721\_B