



Datasheet for ABIN2775704  
**anti-RNF2 antibody (Middle Region)**



[Go to Product page](#)

3 Images

Overview

Quantity:	100 µL
Target:	RNF2
Binding Specificity:	Middle Region
Reactivity:	Human, Mouse, Rat, Cow, Dog, Horse, Zebrafish (Danio rerio), Rabbit, Pig
Host:	Rabbit
Clonality:	Polyclonal
Conjugate:	This RNF2 antibody is un-conjugated
Application:	Western Blotting (WB)

Product Details

Immunogen:	The immunogen is a synthetic peptide directed towards the middle region of human RNF2
Sequence:	NASTHSNQEA GPSNKRTKTS DDSGLELDNN NAAMAIDPVM DGASEIELVF
Predicted Reactivity:	Cow: 100%, Dog: 100%, Horse: 100%, Human: 100%, Mouse: 100%, Pig: 100%, Rabbit: 100%, Rat: 100%, Zebrafish: 93%
Characteristics:	This is a rabbit polyclonal antibody against RNF2. It was validated on Western Blot using a cell lysate as a positive control.
Purification:	Affinity Purified

Target Details

Target:	RNF2
---------	------

## Target Details

---

Alternative Name: [RNF2 \(RNF2 Products\)](#)

---

Background: Polycomb group (PcG) of proteins form the multiprotein complexes that are important for the transcription repression of various genes involved in development and cell proliferation. The protein encoded by RNF2 is one of the PcG proteins. It has been shown to interact with, and suppress the activity of, transcription factor CP2 (TFCP2/CP2). Studies of the mouse counterpart suggested the involvement of this gene in the specification of anterior-posterior axis, as well as in cell proliferation in early development. This protein was also found to interact with huntingtin interacting protein 2 (HIP2), an ubiquitin-conjugating enzyme, and possess ubiquitin ligase activity.

Alias Symbols: BAP1, DING, BAP-1, HIPI3, RING2, RING1B

Protein Interaction Partner: BMI1, SCMH1, HIST2H2AC, UBE2D3, AMBRA1, WASH1, BECN1, ATG14, PIK3C3, TARDBP, SNAI1, NEDD8, UBC, EIF3I, ALYREF, RBM5, RCL1, TRIM28, CEBPZ, SUGP2, G3BP1, AKAP9, YAF2, LRPPRC, KIF20A, RAD50, ARPC4, ABCB6, SMC4, ACOT8, HNRNPDL, THOC1, THRAP3, RBM8A, KIAA0020,

Protein Size: 336

---

Molecular Weight: 38 kDa

---

Gene ID: 6045

---

NCBI Accession: [NM\\_007212](#), [NP\\_009143](#)

---

UniProt: [Q99496](#)

---

## Application Details

---

Application Notes: Optimal working dilutions should be determined experimentally by the investigator.

---

Comment: Antigen size: 336 AA

---

Restrictions: For Research Use only

---

## Handling

---

Format: Liquid

---

Concentration: Lot specific

---

Buffer: Liquid. Purified antibody supplied in 1x PBS buffer with 0.09 % (w/v) sodium azide and 2 % sucrose.

---

Preservative: Sodium azide

---

## Handling

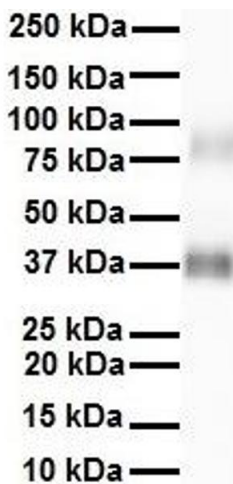
Precaution of Use:	This product contains Sodium azide: a POISONOUS AND HAZARDOUS SUBSTANCE which should be handled by trained staff only.
Handling Advice:	Avoid repeated freeze-thaw cycles.
Storage:	-20 °C
Storage Comment:	For short term use, store at 2-8°C up to 1 week. For long term storage, store at -20°C in small aliquots to prevent freeze-thaw cycles.

## Images



### Western Blotting

**Image 1.** WB Suggested Anti-RNF2 Antibody Titration: 0.2-1 ug/ml ELISA Titer: 1:312500 Positive Control: Daudi cell lysate RNF2 is supported by BioGPS gene expression data to be expressed in Daudi



### Western Blotting

**Image 2.** WB Suggested Anti-RNF2 antibody Titration: 1 ug/mL Sample Type: Human Heart



### Western Blotting

**Image 3.** WB Suggested Anti-RNF2 antibody Titration: 1 ug/mL Sample Type: Human Daudi