

Datasheet for ABIN2775705  
**anti-RNF2 antibody (Middle Region)**[Go to Product page](#)

## 4 Images

## Overview

Quantity:	100 µL
Target:	RNF2
Binding Specificity:	Middle Region
Reactivity:	Human, Mouse, Rat, Cow, Dog, Horse, Zebrafish (Danio rerio), Rabbit, Guinea Pig
Host:	Rabbit
Clonality:	Polyclonal
Conjugate:	This RNF2 antibody is un-conjugated
Application:	Western Blotting (WB), Immunohistochemistry (IHC)

## Product Details

Immunogen:	The immunogen is a synthetic peptide directed towards the middle region of human RNF2
Sequence:	LVFRPHPTLM EKDDSAQTRY IKTSGNATVD HLSKYLAVRL ALEELRSKGE
Predicted Reactivity:	Cow: 100%, Dog: 100%, Guinea Pig: 100%, Horse: 100%, Human: 100%, Mouse: 100%, Rabbit: 100%, Rat: 100%, Zebrafish: 100%
Characteristics:	This is a rabbit polyclonal antibody against RNF2. It was validated on Western Blot and immunohistochemistry.
Purification:	Protein A purified

## Target Details

Target:	RNF2
---------	------

## Target Details

Alternative Name:	RNF2 ( <a href="#">RNF2 Products</a> )
Background:	<p>Polycomb group (PcG) of proteins form the multiprotein complexes that are important for the transcription repression of various genes involved in development and cell proliferation. The protein encoded by RNF2 is one of the PcG proteins. It has been shown to interact with, and suppress the activity of, transcription factor CP2 (TFCP2/CP2). This protein was also found to interact with huntingtin interacting protein 2 (HIP2), an ubiquitin-conjugating enzyme, and possess ubiquitin ligase activity.</p> <p>Alias Symbols: BAP1, DING, BAP-1, HIP13, RING2, RING1B</p> <p>Protein Interaction Partner: BMI1, SCMH1, HIST2H2AC, UBE2D3, AMBRA1, WASH1, BECN1, ATG14, PIK3C3, TARDBP, SNAI1, NEDD8, UBC, EIF3I, ALYREF, RBM5, RCL1, TRIM28, CEBPZ, SUGP2, G3BP1, AKAP9, YAF2, LRPPRC, KIF20A, RAD50, ARPC4, ABCB6, SMC4, ACOT8, HNRNPDL, THOC1, THRAP3, RBM8A, KIAA0020,</p> <p>Protein Size: 336</p>
Molecular Weight:	29 kDa
Gene ID:	6045
NCBI Accession:	<a href="#">NM_007212</a> , <a href="#">NP_009143</a>
UniProt:	<a href="#">Q5TEN1</a>

## Application Details

Application Notes:	Optimal working dilutions should be determined experimentally by the investigator.
Comment:	Antigen size: 336 AA
Restrictions:	For Research Use only

## Handling

Format:	Liquid
Concentration:	Lot specific
Buffer:	Liquid. Purified antibody supplied in 1x PBS buffer with 0.09 % (w/v) sodium azide and 2 % sucrose.
Preservative:	Sodium azide
Precaution of Use:	This product contains Sodium azide: a POISONOUS AND HAZARDOUS SUBSTANCE which should be handled by trained staff only.

## Handling

Handling Advice: Avoid repeated freeze-thaw cycles.

Storage: -20 °C

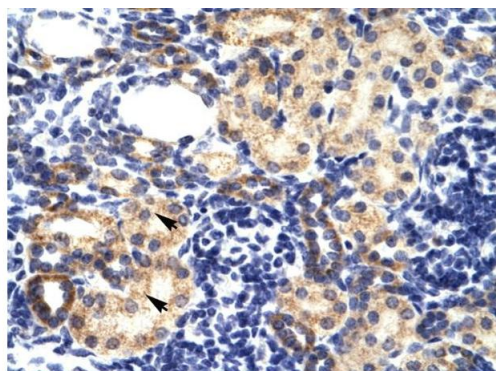
Storage Comment: For short term use, store at 2-8°C up to 1 week. For long term storage, store at -20°C in small aliquots to prevent freeze-thaw cycles.

## Images



### Western Blotting

**Image 1.** WB Suggested Anti-RNF2 Antibody Titration: 1.25ug/ml ELISA Titer: 1:312500 Positive Control: HepG2 cell lysate



Rabbit Anti-RNF2 Antibody  
Catalog Number: ARP34290  
Lot Number: QC4188  
Paraffin Embedded Tissue: Human Kidney  
Cells with Positive label: Epithelial cells of renal tubule (Indicated with Arrows)  
Antibody Concentration: 4.0-8.0 µg/ml  
Magnification: 400X

### Immunohistochemistry

**Image 2.** Human kidney



**Western Blotting**

**Image 3.** WB Suggested Anti-RNF2 antibody Titration: 1 ug/mL Sample Type: Human Heart

Please check the [product details page](#) for more images. Overall 4 images are available for ABIN2775705.