

Datasheet for ABIN2775707
anti-MTF2 antibody (Middle Region)[Go to Product page](#)

3 Images

Overview

Quantity:	100 µL
Target:	MTF2
Binding Specificity:	Middle Region
Reactivity:	Human, Mouse, Rat, Dog, Cow, Horse, Rabbit, Zebrafish (Danio rerio), Guinea Pig
Host:	Rabbit
Clonality:	Polyclonal
Conjugate:	This MTF2 antibody is un-conjugated
Application:	Western Blotting (WB)

Product Details

Immunogen:	The immunogen is a synthetic peptide directed towards the middle region of human M96
Sequence:	VAFKAEKEPE GTSHEFKIKG RKASKPISDS REVSNGIEKK GKKKSVGRPP
Predicted Reactivity:	Cow: 100%, Dog: 100%, Guinea Pig: 100%, Horse: 100%, Human: 100%, Mouse: 100%, Rabbit: 100%, Rat: 100%, Zebrafish: 85%
Characteristics:	This is a rabbit polyclonal antibody against M96. It was validated on Western Blot using a cell lysate as a positive control.
Purification:	Affinity Purified

Target Details

Target:	MTF2
---------	------

Target Details

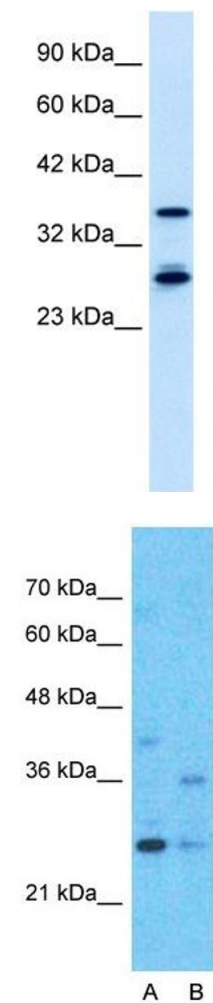
Alternative Name:	M96 (MTF2 Products)
Background:	<p>M96 may be involved in the activation of MT (metallothionein) genes in response to heavy-metal ions.</p> <p>Alias Symbols: M96, PCL2, dJ976013.2, RP5-976013.1, MTF2</p> <p>Protein Interaction Partner: SUZ12, EZH2, SUV39H2, PRMT6, KDM1A, SUV39H1, TMED9, PRKD2, SMAD3, ELAVL1, GSK3B, CREB1, JARID2, GPRASP1,</p> <p>Protein Size: 593</p>
Molecular Weight:	67 kDa
Gene ID:	22823
Pathways:	Stem Cell Maintenance

Application Details

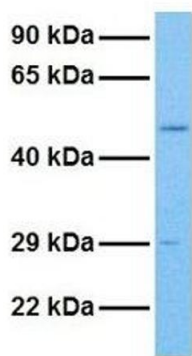
Application Notes:	Optimal working dilutions should be determined experimentally by the investigator.
Comment:	Antigen size: 593 AA
Restrictions:	For Research Use only

Handling

Format:	Liquid
Concentration:	Lot specific
Buffer:	Liquid. Purified antibody supplied in 1x PBS buffer with 0.09 % (w/v) sodium azide and 2 % sucrose.
Preservative:	Sodium azide
Precaution of Use:	This product contains Sodium azide: a POISONOUS AND HAZARDOUS SUBSTANCE which should be handled by trained staff only.
Handling Advice:	Avoid repeated freeze-thaw cycles.
Storage:	-20 °C
Storage Comment:	For short term use, store at 2-8°C up to 1 week. For long term storage, store at -20°C in small aliquots to prevent freeze-thaw cycles.



M96



Western Blotting

Image 1. WB Suggested Anti-M96 Antibody Titration: 0.2-1 ug/ml ELISA Titer: 1:62500 Positive Control: HepG2 cell lysate MTF2 is strongly supported by BioGPS gene expression data to be expressed in Human HepG2 cells

Western Blotting

Image 2. Host: Rabbit Target Name: M96 Sample Type: Hela Lane A: Primary Antibody Lane B: Primary Antibody + Blocking Peptide Primary Antibody Concentration: 1ug/ml Peptide Concentration: 5ug/ml Lysate Quantity: 25ug/lane/lane Gel Concentration: 0.12

Western Blotting

Image 3. Host: Rabbit Target Name: M96 Sample Tissue: Human HCT116 Antibody Dilution: 1.0ug/ml