



[Go to Product page](#)

Datasheet for ABIN2775712

anti-C16orf80 antibody (Middle Region)

1 Image

1 Publication

Overview

Quantity:	100 µL
Target:	C16orf80
Binding Specificity:	Middle Region
Reactivity:	Human, Mouse, Rat, Dog, Zebrafish (Danio rerio), Cow, Guinea Pig, Horse, Rabbit, Goat
Host:	Rabbit
Clonality:	Polyclonal
Conjugate:	This C16orf80 antibody is un-conjugated
Application:	Western Blotting (WB)

Product Details

Immunogen:	The immunogen is a synthetic peptide directed towards the middle region of human C16orf80
Sequence:	IKLPFLVMIII KNLKKYFTFE VQVLDDKNVR RRFASNYQS TTRVKPFICT
Predicted Reactivity:	Cow: 100%, Dog: 100%, Goat: 100%, Guinea Pig: 100%, Horse: 100%, Human: 100%, Mouse: 100%, Rabbit: 100%, Rat: 100%, Zebrafish: 100%
Characteristics:	This is a rabbit polyclonal antibody against C16orf80. It was validated on Western Blot using a cell lysate as a positive control.
Purification:	Affinity Purified

Target Details

Target:	C16orf80
---------	----------

Target Details

Alternative Name:	C16orf80 (C16orf80 Products)
Background:	The exact function of C16orf80 remains unknown. Alias Symbols: EVORF, GTL3, fSAP23 Protein Interaction Partner: BMI1, TFCP2L1, UBC, SF3A2, YWHAG, Protein Size: 193
Molecular Weight:	23 kDa
Gene ID:	29105
NCBI Accession:	NM_013242 , NP_037374
UniProt:	Q9Y6A4

Application Details

Application Notes:	Optimal working dilutions should be determined experimentally by the investigator.
Comment:	Antigen size: 193 AA
Restrictions:	For Research Use only

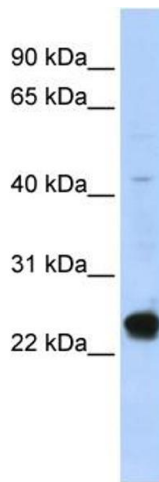
Handling

Format:	Liquid
Concentration:	Lot specific
Buffer:	Liquid. Purified antibody supplied in 1x PBS buffer with 0.09 % (w/v) sodium azide and 2 % sucrose.
Preservative:	Sodium azide
Precaution of Use:	This product contains Sodium azide: a POISONOUS AND HAZARDOUS SUBSTANCE which should be handled by trained staff only.
Handling Advice:	Avoid repeated freeze-thaw cycles.
Storage:	-20 °C
Storage Comment:	For short term use, store at 2-8°C up to 1 week. For long term storage, store at -20°C in small aliquots to prevent freeze-thaw cycles.

Publications

Product cited in: Ewing, Chu, Elisma, Li, Taylor, Climie, McBroom-Cerajewski, Robinson, OConnor, Li, Taylor,

Dharsee, Ho, Heilbut, Moore, Zhang, Ornatsky, Bukhman, Ethier, Sheng, Vasilescu, Abu-Farha, Lambert, Duewel et al.: "Large-scale mapping of human protein-protein interactions by mass spectrometry. ..." in: **Molecular systems biology**, Vol. 3, pp. 89, (2007) ([PubMed](#)).



Western Blotting

Image 1. WB Suggested Anti-C16orf80 Antibody Titration: 0.2-1 ug/ml ELISA Titer: 1:62500 Positive Control: HepG2 cell lysate C16orf80 is supported by BioGPS gene expression data to be expressed in HepG2