

Datasheet for ABIN2775717
anti-SERTAD1 antibody (N-Term)[Go to Product page](#)

2 Images

Overview

Quantity:	100 µL
Target:	SERTAD1
Binding Specificity:	N-Term
Reactivity:	Human, Mouse, Rat, Guinea Pig, Cow, Dog, Rabbit, Horse, Saccharomyces cerevisiae
Host:	Rabbit
Clonality:	Polyclonal
Conjugate:	This SERTAD1 antibody is un-conjugated
Application:	Western Blotting (WB), Immunohistochemistry (IHC)

Product Details

Immunogen:	The immunogen is a synthetic peptide directed towards the N terminal region of human SERTAD1
Sequence:	MLSKGLKRKR EEEEEKEPLA VDSWWLDPGH TAVAQAPPAV ASSSLFDLSV
Predicted Reactivity:	Cow: 93%, Dog: 93%, Guinea Pig: 93%, Horse: 90%, Human: 100%, Mouse: 100%, Rabbit: 92%, Rat: 100%, Yeast: 91%
Characteristics:	This is a rabbit polyclonal antibody against SERTAD1. It was validated on Western Blot and immunohistochemistry.
Purification:	Protein A purified

Target Details

Target:	SERTAD1
---------	---------

Target Details

Alternative Name:	SERTAD1 (SERTAD1 Products)
Background:	<p>SERTA is a transcriptional regulator that interacts with the PHD-bromodomain of co-repressors of Kruppel-associated box (KRAB)-mediated repression, KRIP-1(TIF1beta) and TIF1alpha, as well as the co-activator/adaptor p300/CBP. It is a component of a multiprotein complex containing E2F-1 and DP-1.</p> <p>Alias Symbols: SEI1, TRIP-Br1</p> <p>Protein Interaction Partner: FAH, P4HA3, PATE1, CIB3, EGLN3, ZNF410, ROPN1, SFI1, MVP, PPP2R1A, POT1, ASB8, SETD7, RCHY1, SPEN, RBX1, TLR4, TGM2, STAT5B, SMAD3, HSPB1, HIVEP1, EP300, COPB1, ATXN7L3, UBC, PRDM4, DENND4A, TCEB1, CHURC1, TRIM28, SUPT7L, KAT2B, KLHL42, CDKN2A, CREBBP, CD</p> <p>Protein Size: 236</p>
Molecular Weight:	25 kDa
Gene ID:	29950
NCBI Accession:	NM_013376 , NP_037508
UniProt:	Q9UHV2

Application Details

Application Notes:	Optimal working dilutions should be determined experimentally by the investigator.
Comment:	Antigen size: 236 AA
Restrictions:	For Research Use only

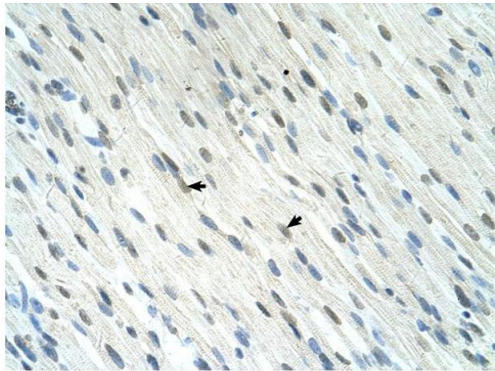
Handling

Format:	Liquid
Concentration:	Lot specific
Buffer:	Liquid. Purified antibody supplied in 1x PBS buffer with 0.09 % (w/v) sodium azide and 2 % sucrose.
Preservative:	Sodium azide
Precaution of Use:	This product contains Sodium azide: a POISONOUS AND HAZARDOUS SUBSTANCE which should be handled by trained staff only.
Handling Advice:	Avoid repeated freeze-thaw cycles.

Handling

Storage:	-20 °C
Storage Comment:	For short term use, store at 2-8°C up to 1 week. For long term storage, store at -20°C in small aliquots to prevent freeze-thaw cycles.

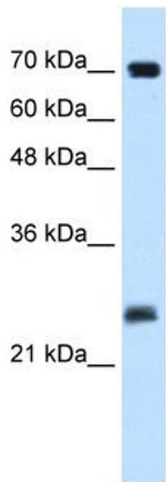
Images



Rabbit Anti-SERTAD1 Antibody
Catalog Number: ARP34309
Lot Number: QC10671
Paraffin Embedded Tissue: Human Muscle
Cells with Positive label: Skeletal muscle cells (Indicated with Arrows)
Antibody Concentration: 4.0-8.0 µg/ml
Magnification: 400X

Immunohistochemistry

Image 1. Human Muscle



Western Blotting

Image 2. WB Suggested Anti-SERTAD1 Antibody Titration:
0.125ug/ml ELISA Titer: 1:312500 Positive Control: Human Placenta