

Datasheet for ABIN2775729
anti-PHF16 antibody (Middle Region)[Go to Product page](#)

2 Images

Overview

| | |
|----------------------|---|
| Quantity: | 100 µL |
| Target: | PHF16 |
| Binding Specificity: | Middle Region |
| Reactivity: | Human, Guinea Pig, Mouse, Dog, Horse, Cow, Rabbit, Rat, Pig |
| Host: | Rabbit |
| Clonality: | Polyclonal |
| Conjugate: | This PHF16 antibody is un-conjugated |
| Application: | Western Blotting (WB), Immunohistochemistry (IHC) |

Product Details

| | |
|-----------------------|---|
| Immunogen: | The immunogen is a synthetic peptide directed towards the middle region of human PHF16 |
| Sequence: | KSYCLKHSQN RQKLGEAEYP HHRAKEQSQA KSEKSLRAQ KLRELEEEFY |
| Predicted Reactivity: | Cow: 92%, Dog: 85%, Guinea Pig: 85%, Horse: 85%, Human: 100%, Mouse: 85%, Pig: 92%, Rabbit: 92%, Rat: 92% |
| Characteristics: | This is a rabbit polyclonal antibody against PHF16. It was validated on Western Blot using a cell lysate as a positive control. |
| Purification: | Affinity Purified |

Target Details

| | |
|---------|-------|
| Target: | PHF16 |
|---------|-------|

Target Details

| | |
|-------------------|--|
| Alternative Name: | PHF16 (PHF16 Products) |
| Background: | <p>This gene is part of a gene cluster on chromosome Xp11.23. PHF16 contains a zinc finger motif often found in transcriptional regulators, however, its exact function is not known. This gene is part of a gene cluster on chromosome Xp11.23. The encoded protein contains a zinc finger motif often found in transcriptional regulators, however, its exact function is not known. Alternative splicing results in multiple transcript variants encoding the same protein.</p> <p>Alias Symbols: JADE3, KIAA0215, MGC138748, MGC138749</p> <p>Protein Interaction Partner: MAGEA11, UBC, HIST3H3, ELAVL1, ING5, ING4, KAT7,</p> <p>Protein Size: 823</p> |
| Molecular Weight: | 94 kDa |
| Gene ID: | 9767 |
| NCBI Accession: | NM_014735 , NP_055550 |
| UniProt: | Q92613 |

Application Details

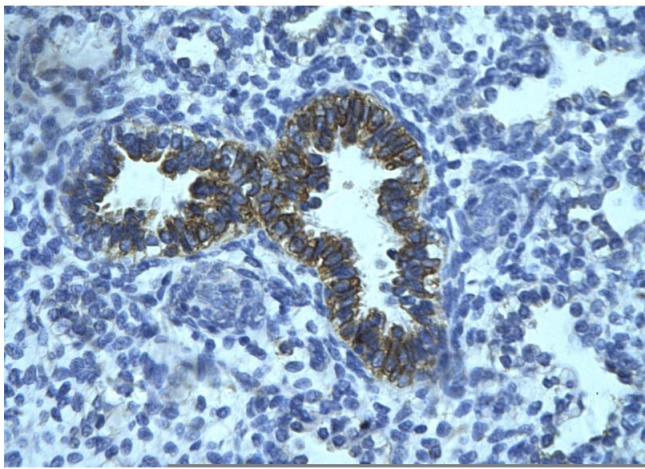
| | |
|--------------------|--|
| Application Notes: | Optimal working dilutions should be determined experimentally by the investigator. |
| Comment: | Antigen size: 823 AA |
| Restrictions: | For Research Use only |

Handling

| | |
|--------------------|--|
| Format: | Liquid |
| Concentration: | Lot specific |
| Buffer: | Liquid. Purified antibody supplied in 1x PBS buffer with 0.09 % (w/v) sodium azide and 2 % sucrose. |
| Preservative: | Sodium azide |
| Precaution of Use: | This product contains Sodium azide: a POISONOUS AND HAZARDOUS SUBSTANCE which should be handled by trained staff only. |
| Handling Advice: | Avoid repeated freeze-thaw cycles. |
| Storage: | -20 °C |
| Storage Comment: | For short term use, store at 2-8°C up to 1 week. For long term storage, store at -20°C in small |

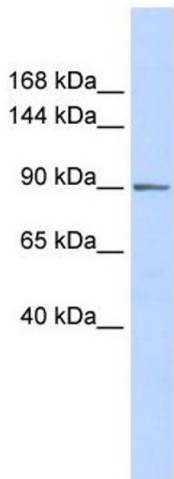
aliquots to prevent freeze-thaw cycles.

Images



Immunohistochemistry

Image 1. Rabbit Anti-PHF16 Antibody Paraffin Embedded Tissue: Human bronchiole epithelium Cellular Data: Epithelial cells of renal tubule Antibody Concentration: 4.0-8.0 ug/ml Magnification: 400X



Western Blotting

Image 2. WB Suggested Anti-PHF16 Antibody Titration: 0.2-1 ug/ml ELISA Titer: 1:312500 Positive Control: Human Placenta