

Datasheet for ABIN2775734
anti-BTBD3 antibody (N-Term)



[Go to Product page](#)

1 Image

Overview

Quantity:	100 µL
Target:	BTBD3
Binding Specificity:	N-Term
Reactivity:	Human, Mouse, Rat, Cow, Guinea Pig, Pig
Host:	Rabbit
Clonality:	Polyclonal
Conjugate:	This BTBD3 antibody is un-conjugated
Application:	Western Blotting (WB)

Product Details

Immunogen:	The immunogen is a synthetic peptide directed towards the N terminal region of human BTBD3
Sequence:	VDDKEKNMKC LTTFFLMLPET VKNRSKSSK KANTSSSSSN SSKLPPVCYE
Predicted Reactivity:	Cow: 86%, Guinea Pig: 86%, Human: 100%, Mouse: 86%, Pig: 100%, Rat: 86%
Characteristics:	This is a rabbit polyclonal antibody against BTBD3. It was validated on Western Blot using a cell lysate as a positive control.
Purification:	Affinity Purified

Target Details

Target:	BTBD3
Alternative Name:	BTBD3 (BTBD3 Products)

Target Details

Background: The exact function of BTBD3 remains unknown.
Alias Symbols: KIAA0952, MGC130038, MGC130039, dJ742J24.1
Protein Interaction Partner: UBC, ELAVL1, PLXNB3,
Protein Size: 522

Molecular Weight: 58 kDa

Gene ID: 22903

NCBI Accession: [NM_014962](#), [NP_055777](#)

UniProt: [Q9Y2F9](#)

Application Details

Application Notes: Optimal working dilutions should be determined experimentally by the investigator.

Comment: Antigen size: 522 AA

Restrictions: For Research Use only

Handling

Format: Liquid

Concentration: Lot specific

Buffer: Liquid. Purified antibody supplied in 1x PBS buffer with 0.09 % (w/v) sodium azide and 2 % sucrose.

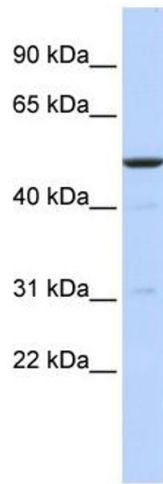
Preservative: Sodium azide

Precaution of Use: This product contains Sodium azide: a POISONOUS AND HAZARDOUS SUBSTANCE which should be handled by trained staff only.

Handling Advice: Avoid repeated freeze-thaw cycles.

Storage: -20 °C

Storage Comment: For short term use, store at 2-8°C up to 1 week. For long term storage, store at -20°C in small aliquots to prevent freeze-thaw cycles.



Western Blotting

Image 1. WB Suggested Anti-BTBD3 Antibody Titration: 0.2-1 ug/ml ELISA Titer: 1:312500 Positive Control: MCF7 cell lysate