



[Go to Product page](#)

Datasheet for ABIN2775735

## anti-CoREST antibody (Middle Region)

### 2 Images

#### Overview

Quantity:	100 µL
Target:	CoREST (RCOR1)
Binding Specificity:	Middle Region
Reactivity:	Human, Mouse, Dog, Rat, Guinea Pig, Cow, Horse
Host:	Rabbit
Clonality:	Polyclonal
Conjugate:	This CoREST antibody is un-conjugated
Application:	Western Blotting (WB), Immunohistochemistry (IHC)

#### Product Details

Immunogen:	The immunogen is a synthetic peptide directed towards the middle region of human RCOR1
Sequence:	DEVLQEWAE HGKEETNGPS NQKPVKSPDN SIKMPEEED E APVLDVRYAS
Predicted Reactivity:	Cow: 93%, Dog: 86%, Guinea Pig: 100%, Horse: 92%, Human: 100%, Mouse: 86%, Rat: 79%
Characteristics:	This is a rabbit polyclonal antibody against RCOR1. It was validated on Western Blot using a cell lysate as a positive control.
Purification:	Affinity Purified

#### Target Details

Target:	CoREST (RCOR1)
Alternative Name:	RCOR1 ( <a href="#">RCOR1 Products</a> )

## Target Details

---

Background:	<p>RCOR1 is a functional corepressor required for regulation of neural-specific gene expression. The RCOR gene encodes a functional corepressor required for regulation of neural-specific gene expression. The RCOR gene encodes a functional corepressor required for regulation of neural-specific gene expression. [supplied by OMIM]. Publication Note: This RefSeq record includes a subset of the publications that are available for this gene. Please see the Entrez Gene record to access additional publications.</p> <p>Alias Symbols: COREST, KIAA0071, RCOR</p> <p>Protein Interaction Partner: HDAC1, UBC, KDM1A, HDAC2, HDAC3, NPM1, MTA3, TP53BP1, NR2C1, TCF3, HMG20B, RCOR1, SNAI1, SUMO2, Dynll1, HIST3H3, TAL1, GFI1, GFI1B, MED28, OBFC1, SUB1, MED12, TRIP4, BCL3, ESCO2, SERPINH1, ZNF217, EMD, CTBP1, RL2, NR2E1, REST, HIST1H3A, SMARCE1, SMARCC2,</p> <p>Protein Size: 482</p>
Molecular Weight:	53 kDa
Gene ID:	23186
NCBI Accession:	<a href="#">NM_015156</a> , <a href="#">NP_055971</a>
UniProt:	<a href="#">Q9UKL0</a>
Pathways:	<a href="#">Regulation of Hormone Metabolic Process</a> , <a href="#">Chromatin Binding</a>

## Application Details

---

Application Notes:	Optimal working dilutions should be determined experimentally by the investigator.
Comment:	Antigen size: 482 AA
Restrictions:	For Research Use only

## Handling

---

Format:	Liquid
Concentration:	Lot specific
Buffer:	Liquid. Purified antibody supplied in 1x PBS buffer with 0.09 % (w/v) sodium azide and 2 % sucrose.
Preservative:	Sodium azide
Precaution of Use:	This product contains Sodium azide: a POISONOUS AND HAZARDOUS SUBSTANCE which should be handled by trained staff only.

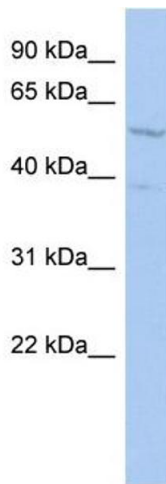
## Handling

Handling Advice: Avoid repeated freeze-thaw cycles.

Storage: -20 °C

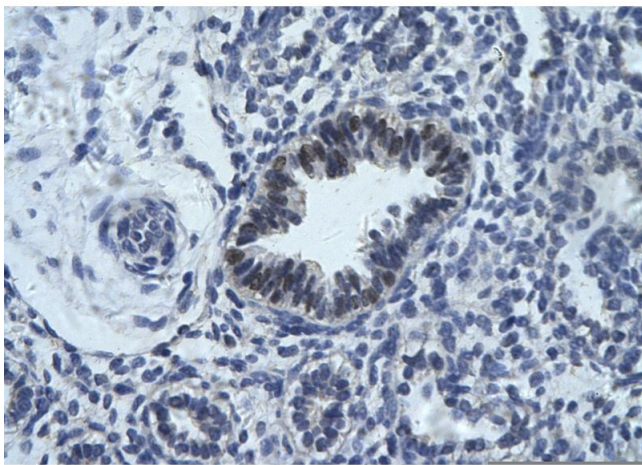
Storage Comment: For short term use, store at 2-8°C up to 1 week. For long term storage, store at -20°C in small aliquots to prevent freeze-thaw cycles.

## Images



### Western Blotting

**Image 1.** WB Suggested Anti-RCOR1 Antibody Titration: 0.2-1 ug/ml ELISA Titer: 1:62500 Positive Control: HT1080 cell lysate RCOR1 is supported by BioGPS gene expression data to be expressed in HT1080



### Immunohistochemistry

**Image 2.** Rabbit Anti-RCOR1 Antibody Paraffin Embedded Tissue: Human bronchiole epithelium Cellular Data: Epithelial cells of renal tubule Antibody Concentration: 4.0-8.0 ug/ml Magnification: 400X