



[Go to Product page](#)

Datasheet for ABIN2775741

anti-C14orf101 antibody (N-Term)

1 Image

Overview

Quantity:	100 µL
Target:	C14orf101
Binding Specificity:	N-Term
Reactivity:	Human, Mouse, Rat, Cow, Rabbit, Dog, Horse, Guinea Pig
Host:	Rabbit
Clonality:	Polyclonal
Conjugate:	This C14orf101 antibody is un-conjugated
Application:	Western Blotting (WB)

Product Details

Immunogen:	The immunogen is a synthetic peptide directed towards the N terminal region of human C14ORF101
Sequence:	WGDQTTLQGF LTHFLREEYG TFSLAKSEIG SSMSEILLSQ VTNMRTLSF
Predicted Reactivity:	Cow: 93%, Dog: 93%, Guinea Pig: 93%, Horse: 93%, Human: 100%, Mouse: 92%, Rabbit: 86%, Rat: 93%
Characteristics:	This is a rabbit polyclonal antibody against C14ORF101. It was validated on Western Blot using a cell lysate as a positive control.
Purification:	Affinity Purified

Target Details

Target:	C14orf101
---------	-----------

Target Details

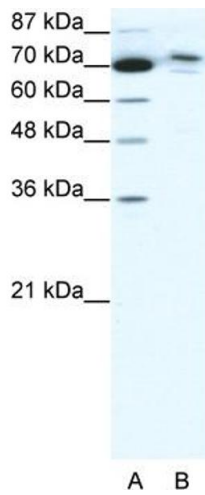
Alternative Name:	C14ORF101 (C14orf101 Products)
Background:	C14orf101 is a protein predicted based on an ORF found in chromosome 14. Alias Symbols: C14orf101, Protein Size: 324
Molecular Weight:	79 kDa
Gene ID:	54916
NCBI Accession:	NM_017799 , NP_060269
UniProt:	Q9NX78

Application Details

Application Notes:	Optimal working dilutions should be determined experimentally by the investigator.
Comment:	Antigen size: 324 AA
Restrictions:	For Research Use only

Handling

Format:	Liquid
Concentration:	Lot specific
Buffer:	Liquid. Purified antibody supplied in 1x PBS buffer with 0.09 % (w/v) sodium azide and 2 % sucrose.
Preservative:	Sodium azide
Precaution of Use:	This product contains Sodium azide: a POISONOUS AND HAZARDOUS SUBSTANCE which should be handled by trained staff only.
Handling Advice:	Avoid repeated freeze-thaw cycles.
Storage:	-20 °C
Storage Comment:	For short term use, store at 2-8°C up to 1 week. For long term storage, store at -20°C in small aliquots to prevent freeze-thaw cycles.



Western Blotting

Image 1. WB Suggested Anti-C14ORF101 Antibody

Titration: 0.125ug/ml ELISA Titer: 1:12500 Positive Control:

HepG2 cell lysate