



Datasheet for ABIN2775743
anti-MANSC1 antibody (N-Term)



[Go to Product page](#)

2 Images

Overview

Quantity:	100 µL
Target:	MANSC1
Binding Specificity:	N-Term
Reactivity:	Human, Mouse, Rat, Cow, Rabbit, Dog, Horse
Host:	Rabbit
Clonality:	Polyclonal
Conjugate:	This MANSC1 antibody is un-conjugated
Application:	Western Blotting (WB), Immunohistochemistry (IHC)

Product Details

Immunogen:	The immunogen is a synthetic peptide directed towards the N terminal region of human MANSC1
Sequence:	LTLRLSASQN CLKKSLEDVV IDIQSSLSKG IRGNPEVYTS TQEDCINSCC
Predicted Reactivity:	Cow: 83%, Dog: 90%, Horse: 92%, Human: 100%, Mouse: 90%, Rabbit: 79%, Rat: 90%
Characteristics:	This is a rabbit polyclonal antibody against MANSC1. It was validated on Western Blot and immunohistochemistry.
Purification:	Affinity Purified

Target Details

Target:	MANSC1
---------	--------

Target Details

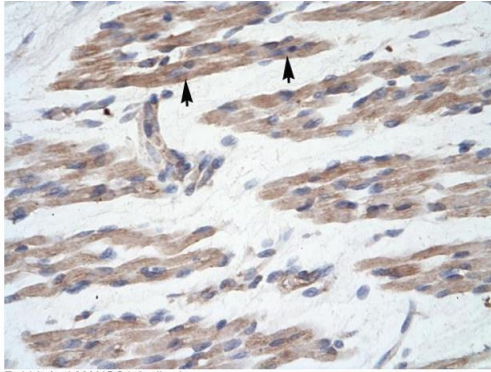
Alternative Name:	MANSC1 (MANSC1 Products)
Background:	MANSC1, located on chromosome 12, encodes a protein whose function is not yet defined. Alias Symbols: LOH12CR3, 9130403P13Rik Protein Size: 431
Molecular Weight:	47 kDa
Gene ID:	54682
NCBI Accession:	NM_018050 , NP_060520
UniProt:	Q9H8J5

Application Details

Application Notes:	Optimal working dilutions should be determined experimentally by the investigator.
Comment:	Antigen size: 431 AA
Restrictions:	For Research Use only

Handling

Format:	Liquid
Concentration:	Lot specific
Buffer:	Liquid. Purified antibody supplied in 1x PBS buffer with 0.09 % (w/v) sodium azide and 2 % sucrose.
Preservative:	Sodium azide
Precaution of Use:	This product contains Sodium azide: a POISONOUS AND HAZARDOUS SUBSTANCE which should be handled by trained staff only.
Handling Advice:	Avoid repeated freeze-thaw cycles.
Storage:	-20 °C
Storage Comment:	For short term use, store at 2-8°C up to 1 week. For long term storage, store at -20°C in small aliquots to prevent freeze-thaw cycles.



Rabbit Anti-MANSC1 Antibody
Catalog Number: ARP34359
Lot Number: QC3481
Paraffin Embedded Tissue: Human Muscle
Cells with Positive label: Skeletal muscle cells(Indicated with Arrows)
Antibody Concentration: 4.0-8.0 µg/ml
Magnification: 400X

Immunohistochemistry

Image 1. Human Muscle



Western Blotting

Image 2. WB Suggested Anti-MANSC1 Antibody Titration:
0.2-1 µg/ml ELISA Titer: 1:312500 Positive Control: Human kidney