

Datasheet for ABIN2775751
anti-CHD1 antibody (Middle Region)



[Go to Product page](#)

1 Image

Overview

Quantity:	100 µL
Target:	CHD1
Binding Specificity:	Middle Region
Reactivity:	Human, Mouse, Horse, Dog, Rabbit, Guinea Pig
Host:	Rabbit
Clonality:	Polyclonal
Conjugate:	This CHD1 antibody is un-conjugated
Application:	Western Blotting (WB)

Product Details

Immunogen:	The immunogen is a synthetic peptide directed towards the middle region of human CHD1
Sequence:	RRKARAKKNK AMKSIKVKEE IKSDSSPLPS EKSDDDDKL SESKSDGRER
Predicted Reactivity:	Dog: 93%, Guinea Pig: 93%, Horse: 100%, Human: 100%, Mouse: 85%, Rabbit: 86%
Characteristics:	This is a rabbit polyclonal antibody against CHD1. It was validated on Western Blot using a cell lysate as a positive control.
Purification:	Affinity Purified

Target Details

Target:	CHD1
Alternative Name:	CHD1 (CHD1 Products)

Target Details

Background:	<p>The CHD family of proteins is characterized by the presence of chromo (chromatin organization modifier) domains and SNF2-related helicase/ATPase domains. CHD genes alter gene expression possibly by modification of chromatin structure thus altering access</p> <p>Alias Symbols: DKFZp686E2337</p> <p>Protein Interaction Partner: FBXW11, UBC, ISG15, SPP1, SIRT7, ELAVL1, PAF1, SUMO2, SUMO1, MLLT1, HIST1H3A, CEBPA, HMGA1, SSRP1, SRSF3, SAFB, HIST3H3, HDAC1, H3F3B, NCOR1, BCLAF1, ARRB1,</p> <p>Protein Size: 1710</p>
Molecular Weight:	197 kDa
Gene ID:	1105
NCBI Accession:	NM_001270 , NP_001261
UniProt:	O14646
Pathways:	Chromatin Binding

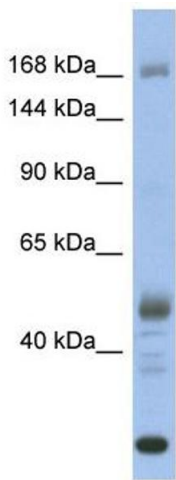
Application Details

Application Notes:	Optimal working dilutions should be determined experimentally by the investigator.
Comment:	Antigen size: 1710 AA
Restrictions:	For Research Use only

Handling

Format:	Liquid
Concentration:	Lot specific
Buffer:	Liquid. Purified antibody supplied in 1x PBS buffer with 0.09 % (w/v) sodium azide and 2 % sucrose.
Preservative:	Sodium azide
Precaution of Use:	This product contains Sodium azide: a POISONOUS AND HAZARDOUS SUBSTANCE which should be handled by trained staff only.
Handling Advice:	Avoid repeated freeze-thaw cycles.
Storage:	-20 °C
Storage Comment:	For short term use, store at 2-8°C up to 1 week. For long term storage, store at -20°C in small

aliquots to prevent freeze-thaw cycles.



Western Blotting

Image 1. WB Suggested Anti-CHD1 Antibody Titration: 0.2-1 ug/ml ELISA Titer: 1:62500 Positive Control: Human Stomach