

Datasheet for ABIN2775754
anti-CRIP2 antibody (Middle Region)[Go to Product page](#)

2 Images

Overview

Quantity:	100 µL
Target:	CRIP2
Binding Specificity:	Middle Region
Reactivity:	Human, Mouse, Rat, Guinea Pig, Cow, Dog, Horse, Zebrafish (Danio rerio)
Host:	Rabbit
Clonality:	Polyclonal
Conjugate:	This CRIP2 antibody is un-conjugated
Application:	Western Blotting (WB), Immunohistochemistry (IHC)

Product Details

Immunogen:	The immunogen is a synthetic peptide directed towards the middle region of human CRIP2
Sequence:	TLTPGGHAEH DGQPYCHKPC YGILFGPKG V NTGAVGSYIY DRDPEGKVQP
Predicted Reactivity:	Cow: 100%, Dog: 100%, Guinea Pig: 100%, Horse: 79%, Human: 100%, Mouse: 100%, Rat: 100%, Zebrafish: 93%
Characteristics:	This is a rabbit polyclonal antibody against CRIP2. It was validated on Western Blot using a cell lysate as a positive control.
Purification:	Affinity Purified

Target Details

Target:	CRIP2
---------	-------

Target Details

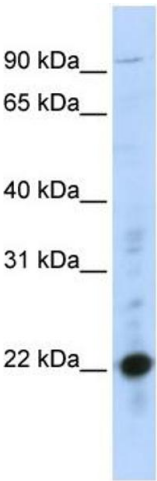
Alternative Name:	CRIP2 (CRIP2 Products)
Background:	<p>The exact function of CRIP2 remains unknown.</p> <p>Alias Symbols: CRIP, CRP2, ESP1</p> <p>Protein Interaction Partner: BAG3, ATXN1, APP, ATN1, OSGEP, GADD45G, SPRY2, TK1, KLF10, SMN1, PCYT2, ATP1B1, GATA6, GATA4, PRKG1, SRF, PTPN13,</p> <p>Protein Size: 208</p>
Molecular Weight:	22 kDa
Gene ID:	1397
NCBI Accession:	NM_001312 , NP_001303
UniProt:	P52943

Application Details

Application Notes:	Optimal working dilutions should be determined experimentally by the investigator.
Comment:	Antigen size: 208 AA
Restrictions:	For Research Use only

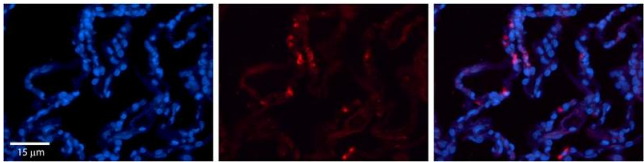
Handling

Format:	Liquid
Concentration:	Lot specific
Buffer:	Liquid. Purified antibody supplied in 1x PBS buffer with 0.09 % (w/v) sodium azide and 2 % sucrose.
Preservative:	Sodium azide
Precaution of Use:	This product contains Sodium azide: a POISONOUS AND HAZARDOUS SUBSTANCE which should be handled by trained staff only.
Handling Advice:	Avoid repeated freeze-thaw cycles.
Storage:	-20 °C
Storage Comment:	For short term use, store at 2-8°C up to 1 week. For long term storage, store at -20°C in small aliquots to prevent freeze-thaw cycles.



Western Blotting

Image 1. WB Suggested Anti-CRIP2 Antibody Titration: 0.2-1 ug/ml ELISA Titer: 1:312500 Positive Control: MCF7 cell lysate CRIP2 is supported by BioGPS gene expression data to be expressed in MCF7



Immunohistochemistry

Image 2. Rabbit Anti-CRIP2 Antibody Formalin Fixed Paraffin Embedded Tissue: Human Lung Tissue Observed Staining: Cytoplasmic in alveolar type I cells Primary Antibody Concentration: 1:100 Other Working Concentrations: 1/600 Secondary Antibody: Donkey anti-Rabbit-Cy3 Secondary Antibody Concentration: 1:200 Magnification: 20X Exposure Time: 0.5 - 2.0 sec